

Office Property For Lease

1505 E. Colonial Drive • Orlando, Fl. • 32803



SPACE AVAILABLE:

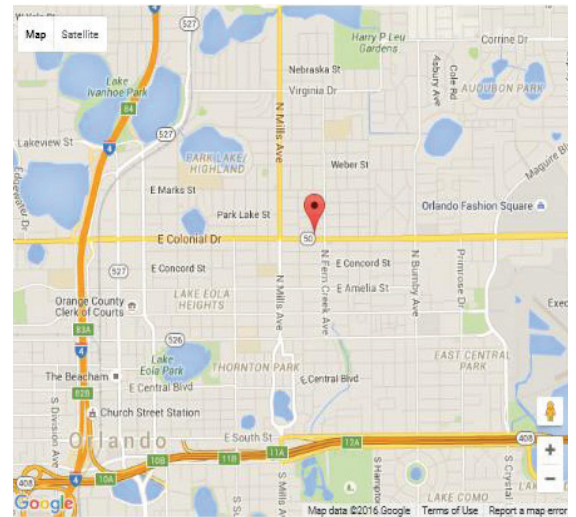
5,100+ RSF (First Floor)

- Glass double-door entrance, numerous window offices, conference room, large breakroom, two restrooms

PROPERTY FEATURES:

- Prime Downtown Orlando office location
- Easily accessible from I-4, the 408, major thoroughfares
- Close to Orange County Courthouse, restaurants, shopping and services
- Building signage available (highly visible to over 40,000 VPD)
- Negotiable improvement allowance
- Free parking on-site and in reserved paved lot on Woodward St. and along Woodward St. (parking ratio 3.8/1000 SF)
- Utilities - Fiber optic to building. AT&T phone provider
- Nicely finished common lobby with receptionist

Lease Rate: \$15.00/SF
plus electric/janitorial



For further information, contact:

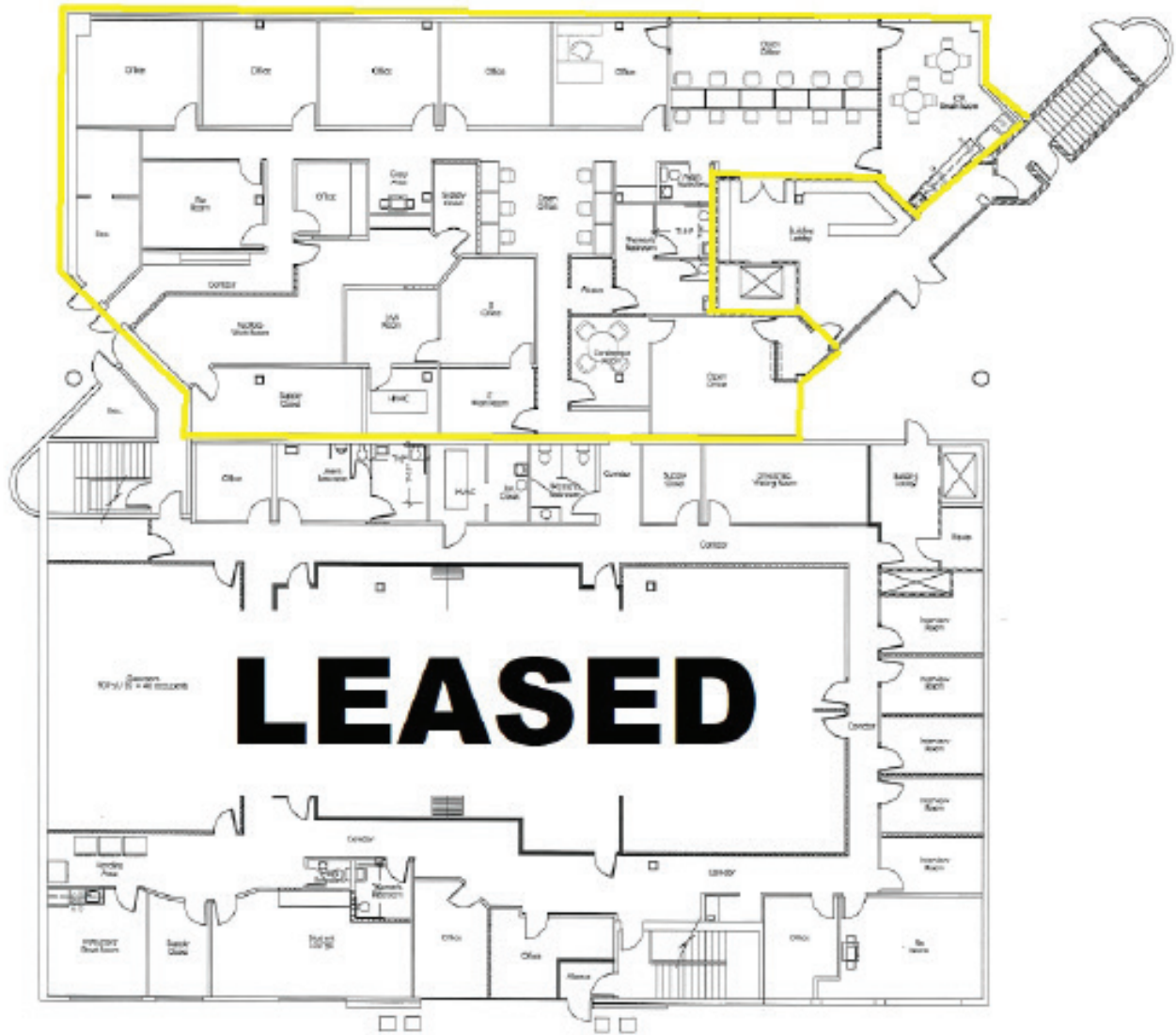
Christi Davis, CCIM
407-206-5732 Direct
407-694-5179 Cell
email: christi@bywater.com

105 E. Robinson, Suite 200
Orlando, FL 32801
Office 407•206•7300 - Fax 407•206•5741

The Bywater Company is the agent of the Landlord or Seller of this property and will be paid by the Landlord of Seller. All information furnished with respect to the subject property has been obtained from sources deemed reliable. No representation as to the accuracy thereof is made. This offering is subject to errors, omissions, prior sales or withdrawal without notice.

1505 E. Colonial Drive

Colonial Park Office Building



First Floor
5,100± SF

Christi Davis, CCIM
(407) 206-5732 direct
(407) 694-5179 cell
email: christi@bywater.com

THE
BYWATER
COMPANY

105 E. Robinson Street
Suite 200
Orlando, FL 32801
(407) 206-7300 main
email: tbc@bywater.com