

324-356 Chestnut Street • Union, NJ

Available for Lease



1,418 - 8,000 SF (End Cap) – Divisible Full Basement Available for Lease



DEMOGRAPHICS	1 mile	3 mile	5 mile
Total Population	18,926	234,011	590,155
Average HHI	\$112,587	\$95,897	\$98,404
Households	6,981	83,070	211,776



Contact: Steve Battista
 sbattista@jefferyrealty.com
 c: 908.963.4539 • o: 908.668.9600 x240

GLA

38,000 SF

Available Space

1,418 - 8,000 SF (End Cap) – Divisible
Full Basement

Rental Rate

Call for Quote

NNN

\$12.60/SF

Parking

130+ spaces

Traffic count

16,428 vehicles
pass the site daily
on Chestnut Street

Frontage

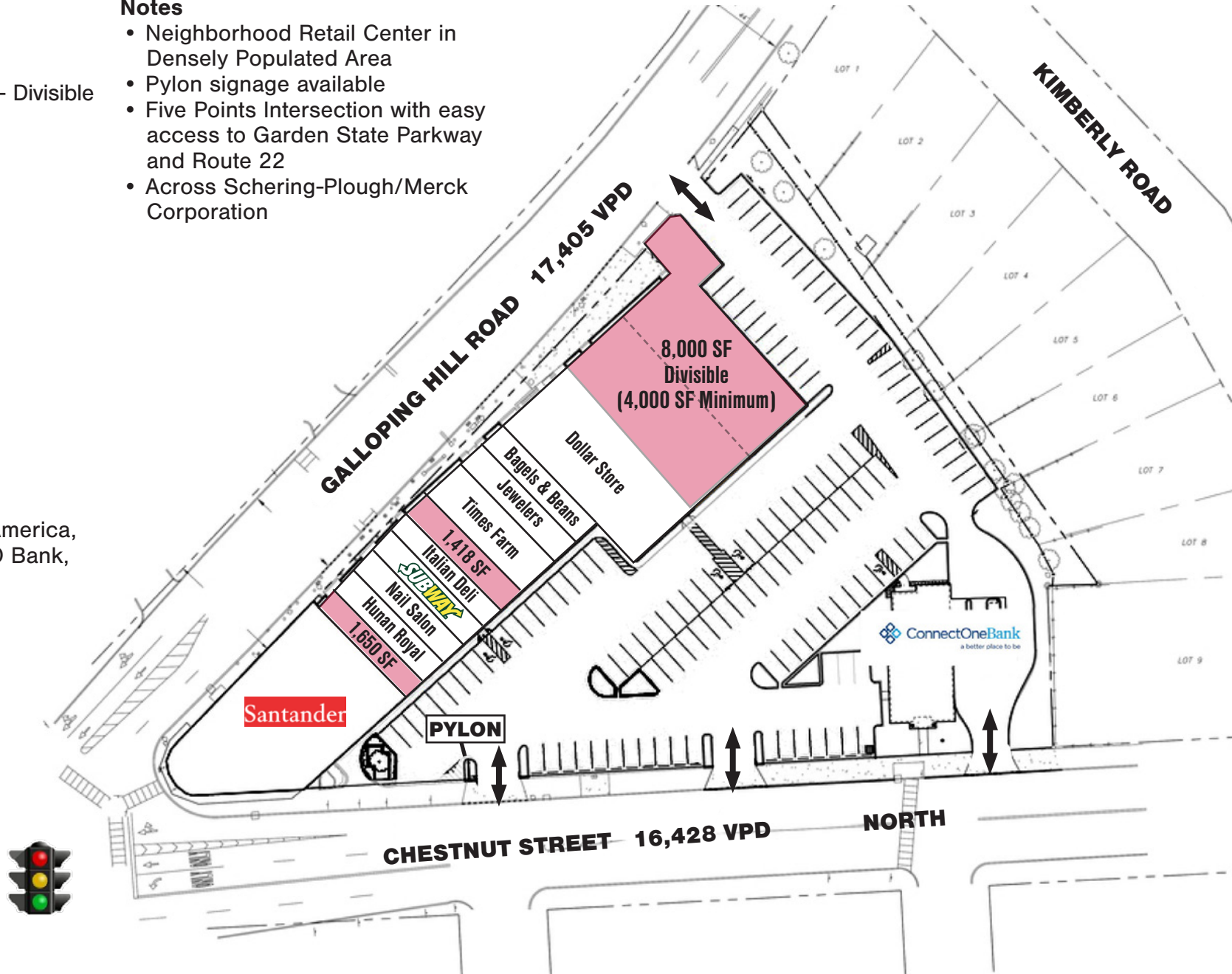
472' on Chestnut St.

Neighboring Retailers

Manhattan Begel, Bank of America,
Dunkin' Santander bank, TD Bank,
Starbucks, Boston Market

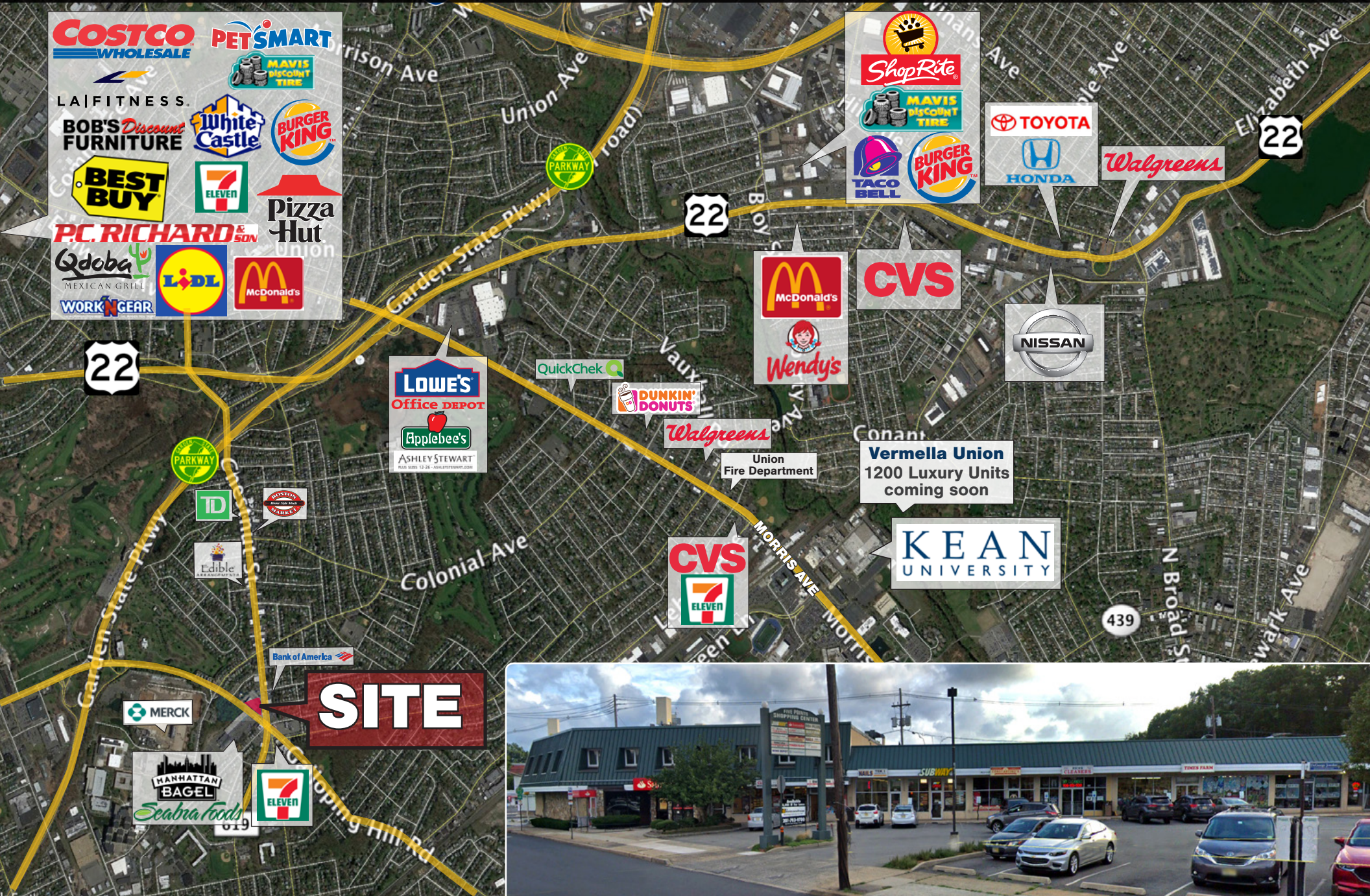
Notes

- Neighborhood Retail Center in Densely Populated Area
- Pylon signage available
- Five Points Intersection with easy access to Garden State Parkway and Route 22
- Across Schering-Plough/Merck Corporation



324-356 Chestnut Street • Union, NJ

Available for Lease



116 Rt 22 N. Plainfield, NJ 07060 • T: 908-668-9600 • F: 908-668-5225 • www.JefferyRealty.com
All information is from sources deemed reliable and is submitted subject to errors, omissions, change of price, terms, prior sales and withdrawals.

