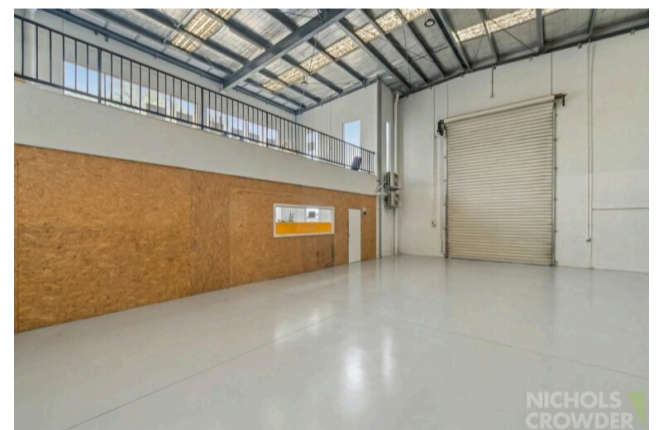


Unit 1/95 Hartnett Drive, Seaford



For Lease

Corner Location - Massive Exposure

Occupying a prominent corner position with exceptional exposure to two major thoroughfares, 1/95 Hartnett Drive, Seaford presents a versatile commercial property ideally suited to bulky goods retail, showroom, office and warehousing uses.

Strategically positioned within Seaford's established industrial and commercial precinct, the property benefits from significant passing traffic, excellent signage opportunities and convenient access to key arterial routes connecting to Frankston, Carrum Downs and the wider Melbourne south-east region.

Key features include:

- * Building: 457sqm *
- * Mezzanine: 100sqm *
- * Enclosed showroom/open plan office
- * Manager offices

- * Container height roller door
- * Male & female amenities
- * Kitchenette & lunchroom
- * Three-phase power supply

For further information or to arrange an inspection, please contact the listing agents.

PLEASE NOTE:

* All information and measurements are approximates. Please refer to Contract of Sale and/or Lease documentation. All images subject to copyright.

* By enquiring on this property you agree to receive regular property updates and marketing communication from Nichols Crowder. You may unsubscribe at any time.

PROPERTY DETAILS

Property ID

3P6317

Price

\$50,200 p.a. + GST + Outgoings

Agents

Thomas Gordon

0456 353 432

thomasg@nicholscrowder.com

James Dodge

0488 586 896

jamesd@nicholscrowder.com

Nichols Crowder Carrum Downs

03 9775 1535

request@nicholscrowder.com

nicholscrowder.com.au

Nichols Crowder Carrum Downs, 1 Colemans Road, Carrum Downs VIC 3201

E & O. Whilst every care has been taken in producing the above information, no warranty is given or implied as to the accuracy.

Prospective purchasers are required to take such actions as necessary to satisfy themselves in this respect. The property is subject to prior sale or withdrawal.