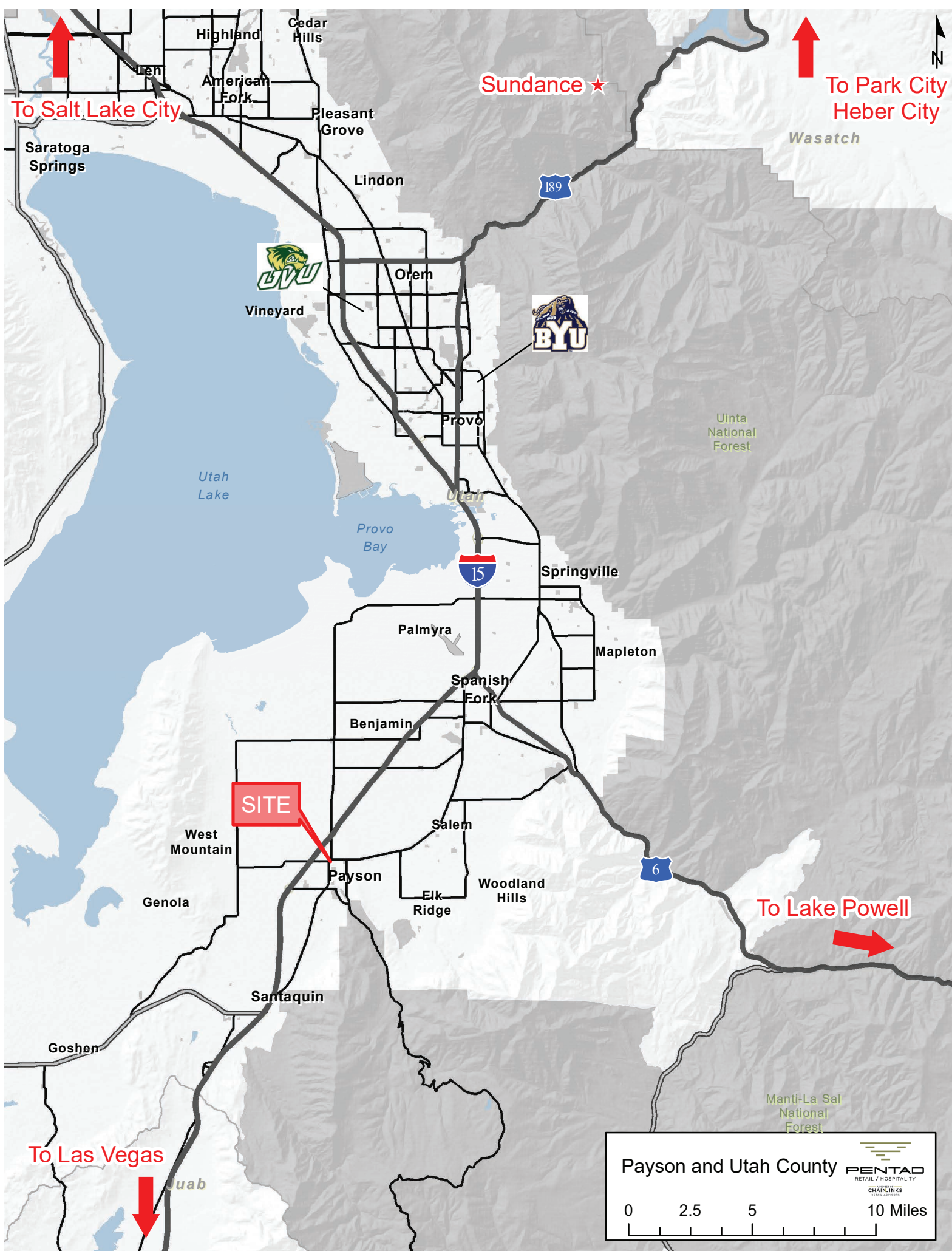


Former One Man Band

97 West 100 North
Payson, UT 84651

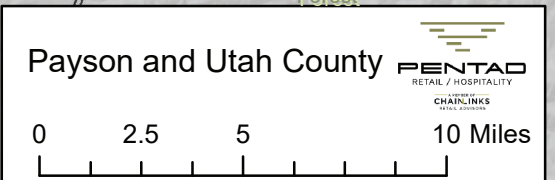


Property Information

- For Sale or Lease
- 1,692 SF
- \$16-\$18 PSF
- \$350,000 Sale Price
- Fully equipped 2nd Generation Restaurant
- Located along 100 North Connector Hwy to Springville City

Demographics

Population	1 Mile	3 Mile	5 Mile
2018 Estimated Population	9,997	24,288	41,207
2022 Projected Population	10,486	26,755	46,232
Households	1 Mile	3 Mile	5 Mile
2018 Estimated Households	3,022	6,653	10,991
2023 Projected Households	3,170	7,271	12,254
2018 Est Median HH Income	\$57,714	\$65,155	\$71,881
2023 Est. Per Capita Income	\$23,368	\$24,569	\$26,595



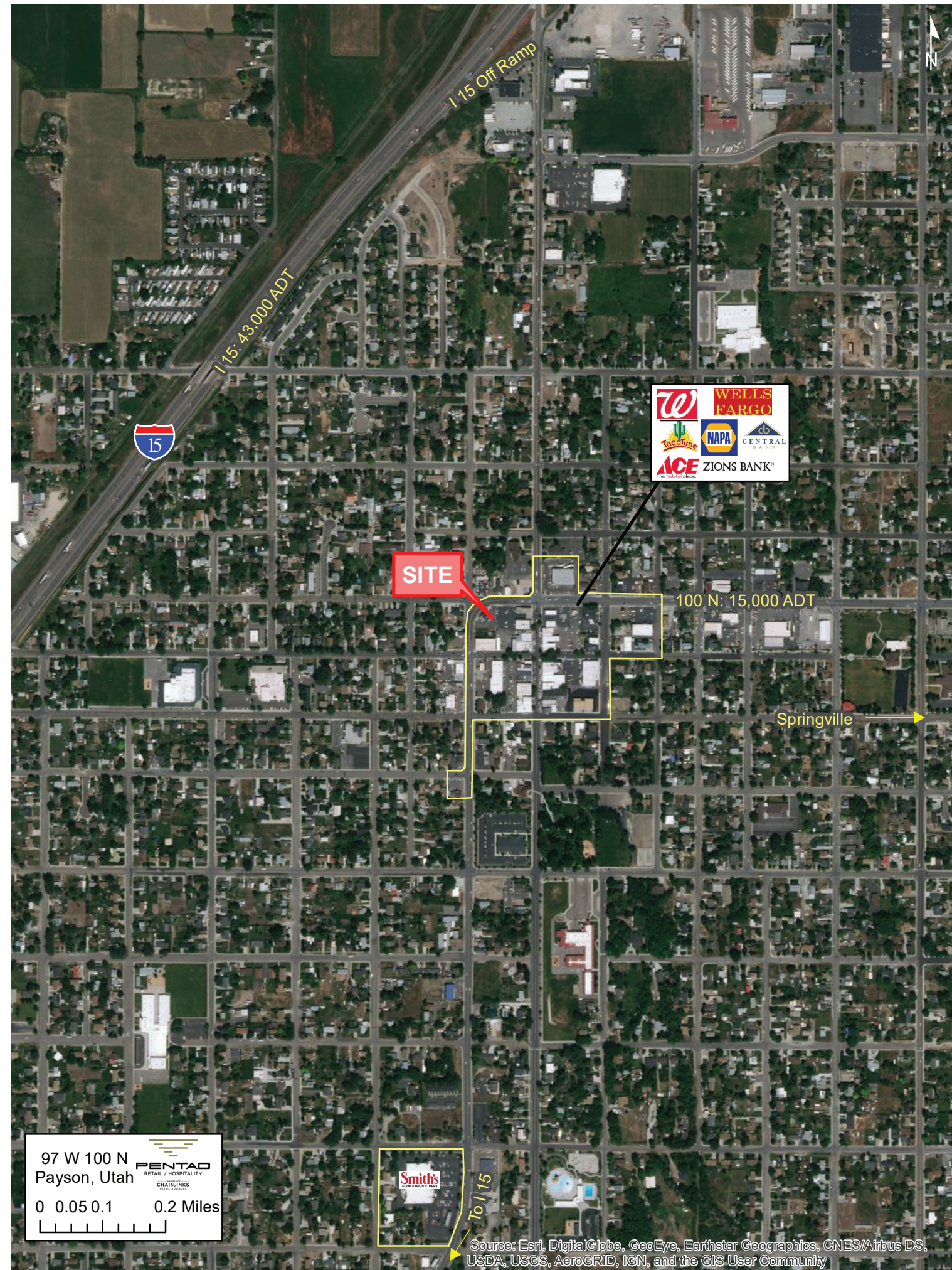
Preston Miller Spencer Greer
 preston@pentadrh.com spencer@pentadrh.com
 T 801.433.9064 T 801.433.9073



A MEMBER OF
CHAINLINKS
 RETAIL ADVISORS

Former One Man Band

97 West 100 North
Payson, UT 84651



Preston Miller
preston@pentadrh.com
T 801.433.9064

Spencer Greer
spencer@pentadrh.com
T 801.433.9073



A MEMBER OF
CHAINLINKS
RETAIL ADVISORS

97 W 100 N
Payson, Utah
0 0.05 0.1 0.2 Miles
[Scale bar]

Source: Esri, DigitalGlobe, GeoEye, Earthstar Geographics, CNES/Airbus DS, USDA, USGS, AeroGRID, IGN, and the GIS User Community