



# Demographic and Income Comparison Profile

609 E Jasper St, Paris, Illinois, 61944  
Rings: 1, 5, 10 mile radii

Prepared by Esri  
Latitude: 39.60387  
Longitude: -87.68532

	1 mile	5 miles	10 miles
<b>Census 2010 Summary</b>			
Population	4,958	10,754	14,412
Households	2,165	4,606	6,055
Families	1,344	2,906	3,983
Average Household Size	2.25	2.29	2.35
Owner Occupied Housing Units	1,452	3,231	4,466
Renter Occupied Housing Units	713	1,375	1,589
Median Age	40.5	42.4	42.9
<b>2016 Summary</b>			
Population	4,876	10,399	13,932
Households	2,147	4,502	5,918
Families	1,316	2,808	3,852
Average Household Size	2.23	2.27	2.32
Owner Occupied Housing Units	1,396	3,069	4,257
Renter Occupied Housing Units	751	1,434	1,662
Median Age	41.8	43.6	44.1
Median Household Income	\$38,999	\$39,423	\$42,163
Average Household Income	\$50,268	\$52,314	\$56,244
<b>2021 Summary</b>			
Population	4,783	10,118	13,562
Households	2,117	4,408	5,796
Families	1,291	2,734	3,753
Average Household Size	2.22	2.25	2.31
Owner Occupied Housing Units	1,388	3,006	4,170
Renter Occupied Housing Units	729	1,402	1,627
Median Age	42.8	44.4	45.3
Median Household Income	\$40,194	\$41,120	\$45,163
Average Household Income	\$53,776	\$56,142	\$60,796
<b>Trends: 2016-2021 Annual Rate</b>			
Population	-0.38%	-0.55%	-0.54%
Households	-0.28%	-0.42%	-0.42%
Families	-0.38%	-0.53%	-0.52%
Owner Households	-0.11%	-0.41%	-0.41%
Median Household Income	0.61%	0.85%	1.38%

Source: U.S. Census Bureau, Census 2010 Summary File 1. Esri forecasts for 2016 and 2021.



# Demographic and Income Comparison Profile

609 E Jasper St, Paris, Illinois, 61944  
Rings: 1, 5, 10 mile radii

Prepared by Esri  
Latitude: 39.60387  
Longitude: -87.68532

2016 Households by Income	1 mile		5 miles		10 miles	
	Number	Percent	Number	Percent	Number	Percent
<\$15,000	387	18.0%	843	18.7%	988	16.7%
\$15,000 - \$24,999	263	12.2%	550	12.2%	683	11.5%
\$25,000 - \$34,999	280	13.0%	579	12.9%	739	12.5%
\$35,000 - \$49,999	411	19.1%	750	16.7%	976	16.5%
\$50,000 - \$74,999	384	17.9%	795	17.7%	1,070	18.1%
\$75,000 - \$99,999	223	10.4%	493	11.0%	682	11.5%
\$100,000 - \$149,999	143	6.7%	353	7.8%	557	9.4%
\$150,000 - \$199,999	36	1.7%	83	1.8%	123	2.1%
\$200,000+	19	0.9%	58	1.3%	100	1.7%
Median Household Income	\$38,999		\$39,423		\$42,163	
Average Household Income	\$50,268		\$52,314		\$56,244	
Per Capita Income	\$21,826		\$22,735		\$24,020	

2021 Households by Income	1 mile		5 miles		10 miles	
	Number	Percent	Number	Percent	Number	Percent
<\$15,000	383	18.1%	822	18.6%	966	16.7%
\$15,000 - \$24,999	288	13.6%	605	13.7%	745	12.9%
\$25,000 - \$34,999	242	11.4%	487	11.0%	628	10.8%
\$35,000 - \$49,999	338	16.0%	597	13.5%	756	13.0%
\$50,000 - \$74,999	395	18.7%	806	18.3%	1,058	18.3%
\$75,000 - \$99,999	232	11.0%	513	11.6%	717	12.4%
\$100,000 - \$149,999	170	8.0%	413	9.4%	666	11.5%
\$150,000 - \$199,999	46	2.2%	104	2.4%	154	2.7%
\$200,000+	21	1.0%	61	1.4%	106	1.8%
Median Household Income	\$40,194		\$41,120		\$45,163	
Average Household Income	\$53,776		\$56,142		\$60,796	
Per Capita Income	\$23,448		\$24,541		\$26,115	

**Data Note:** Income is expressed in current dollars.

**Source:** U.S. Census Bureau, Census 2010 Summary File 1. Esri forecasts for 2016 and 2021.



# Demographic and Income Comparison Profile

609 E Jasper St, Paris, Illinois, 61944  
Rings: 1, 5, 10 mile radii

Prepared by Esri  
Latitude: 39.60387  
Longitude: -87.68532

2010 Population by Age	1 mile		5 miles		10 miles	
	Number	Percent	Number	Percent	Number	Percent
Age 0 - 4	325	6.6%	657	6.1%	837	5.8%
Age 5 - 9	280	5.6%	616	5.7%	836	5.8%
Age 10 - 14	335	6.8%	697	6.5%	946	6.6%
Age 15 - 19	312	6.3%	662	6.2%	910	6.3%
Age 20 - 24	270	5.4%	556	5.2%	714	5.0%
Age 25 - 34	572	11.5%	1,224	11.4%	1,575	10.9%
Age 35 - 44	637	12.8%	1,280	11.9%	1,748	12.1%
Age 45 - 54	669	13.5%	1,559	14.5%	2,215	15.4%
Age 55 - 64	637	12.8%	1,472	13.7%	2,019	14.0%
Age 65 - 74	458	9.2%	1,012	9.4%	1,357	9.4%
Age 75 - 84	332	6.7%	695	6.5%	871	6.0%
Age 85+	129	2.6%	325	3.0%	384	2.7%

2016 Population by Age	1 mile		5 miles		10 miles	
	Number	Percent	Number	Percent	Number	Percent
Age 0 - 4	310	6.4%	610	5.9%	772	5.5%
Age 5 - 9	289	5.9%	594	5.7%	784	5.6%
Age 10 - 14	304	6.2%	629	6.0%	852	6.1%
Age 15 - 19	272	5.6%	570	5.5%	775	5.6%
Age 20 - 24	271	5.6%	562	5.4%	730	5.2%
Age 25 - 34	568	11.6%	1,198	11.5%	1,566	11.2%
Age 35 - 44	617	12.6%	1,200	11.5%	1,627	11.7%
Age 45 - 54	601	12.3%	1,314	12.6%	1,833	13.2%
Age 55 - 64	685	14.0%	1,562	15.0%	2,175	15.6%
Age 65 - 74	509	10.4%	1,160	11.2%	1,575	11.3%
Age 75 - 84	303	6.2%	651	6.3%	834	6.0%
Age 85+	149	3.1%	350	3.4%	410	2.9%

2021 Population by Age	1 mile		5 miles		10 miles	
	Number	Percent	Number	Percent	Number	Percent
Age 0 - 4	292	6.1%	579	5.7%	729	5.4%
Age 5 - 9	287	6.0%	568	5.6%	740	5.5%
Age 10 - 14	325	6.8%	646	6.4%	852	6.3%
Age 15 - 19	262	5.5%	548	5.4%	754	5.6%
Age 20 - 24	232	4.8%	491	4.9%	625	4.6%
Age 25 - 34	544	11.4%	1,137	11.2%	1,472	10.9%
Age 35 - 44	570	11.9%	1,153	11.4%	1,565	11.5%
Age 45 - 54	569	11.9%	1,175	11.6%	1,641	12.1%
Age 55 - 64	660	13.8%	1,473	14.6%	2,058	15.2%
Age 65 - 74	577	12.1%	1,292	12.8%	1,775	13.1%
Age 75 - 84	321	6.7%	717	7.1%	949	7.0%
Age 85+	145	3.0%	337	3.3%	402	3.0%

Source: U.S. Census Bureau, Census 2010 Summary File 1. Esri forecasts for 2016 and 2021.



# Demographic and Income Comparison Profile

609 E Jasper St, Paris, Illinois, 61944  
Rings: 1, 5, 10 mile radii

Prepared by Esri  
Latitude: 39.60387  
Longitude: -87.68532

2010 Race and Ethnicity	1 mile		5 miles		10 miles	
	Number	Percent	Number	Percent	Number	Percent
White Alone	4,854	97.9%	10,551	98.1%	14,163	98.3%
Black Alone	26	0.5%	43	0.4%	50	0.3%
American Indian Alone	9	0.2%	15	0.1%	20	0.1%
Asian Alone	9	0.2%	21	0.2%	26	0.2%
Pacific Islander Alone	1	0.0%	2	0.0%	3	0.0%
Some Other Race Alone	21	0.4%	37	0.3%	45	0.3%
Two or More Races	39	0.8%	86	0.8%	105	0.7%
Hispanic Origin (Any Race)	70	1.4%	124	1.2%	155	1.1%

2016 Race and Ethnicity	1 mile		5 miles		10 miles	
	Number	Percent	Number	Percent	Number	Percent
White Alone	4,735	97.1%	10,127	97.4%	13,602	97.6%
Black Alone	33	0.7%	54	0.5%	63	0.5%
American Indian Alone	11	0.2%	19	0.2%	26	0.2%
Asian Alone	11	0.2%	27	0.3%	32	0.2%
Pacific Islander Alone	1	0.0%	2	0.0%	3	0.0%
Some Other Race Alone	24	0.5%	41	0.4%	50	0.4%
Two or More Races	60	1.2%	130	1.2%	156	1.1%
Hispanic Origin (Any Race)	74	1.5%	128	1.2%	162	1.2%

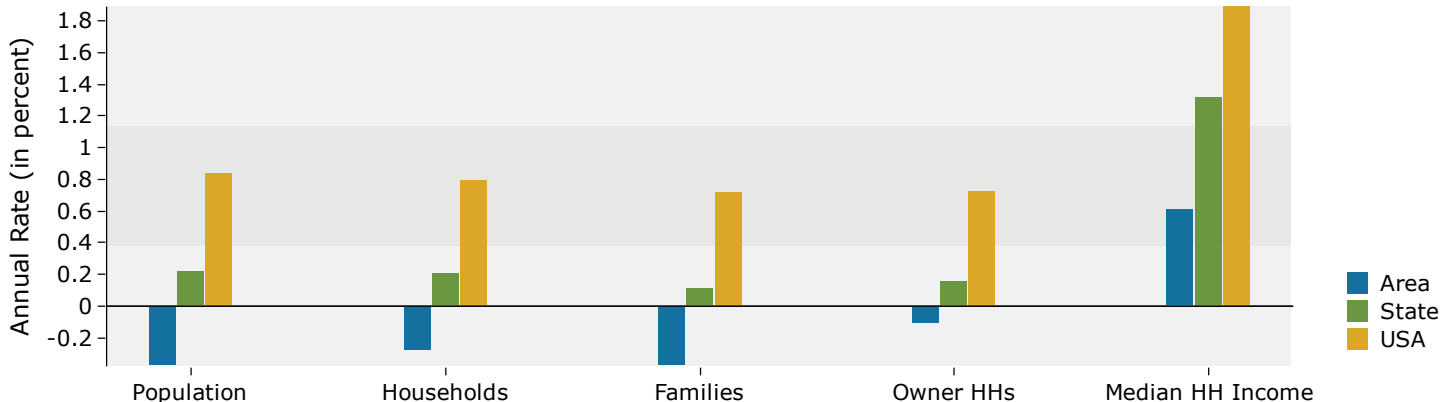
  

2021 Race and Ethnicity	1 mile		5 miles		10 miles	
	Number	Percent	Number	Percent	Number	Percent
White Alone	4,613	96.5%	9,792	96.8%	13,168	97.1%
Black Alone	40	0.8%	65	0.6%	76	0.6%
American Indian Alone	13	0.3%	22	0.2%	31	0.2%
Asian Alone	13	0.3%	31	0.3%	37	0.3%
Pacific Islander Alone	1	0.0%	2	0.0%	3	0.0%
Some Other Race Alone	25	0.5%	42	0.4%	51	0.4%
Two or More Races	77	1.6%	164	1.6%	197	1.5%
Hispanic Origin (Any Race)	76	1.6%	131	1.3%	167	1.2%

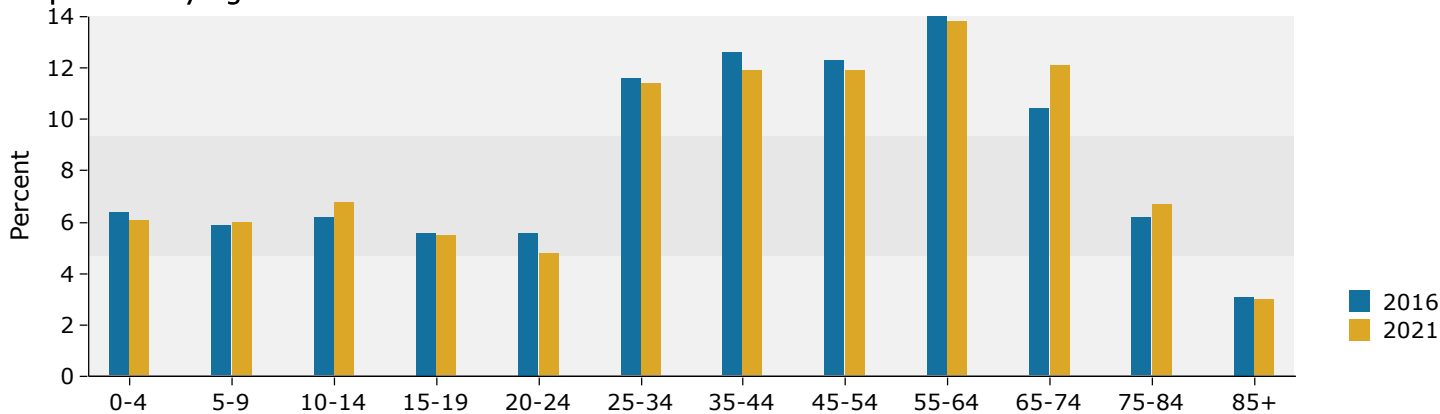
Source: U.S. Census Bureau, Census 2010 Summary File 1. Esri forecasts for 2016 and 2021.

## 1 mile

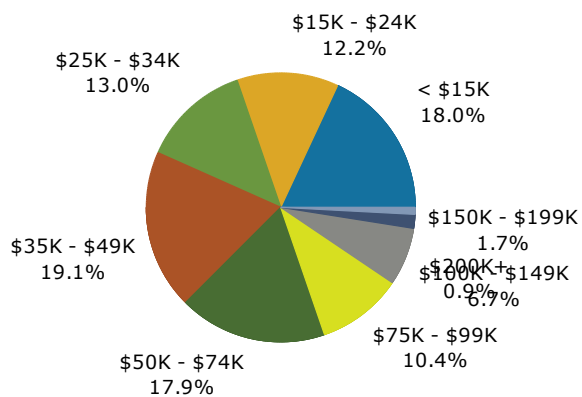
### Trends 2016-2021



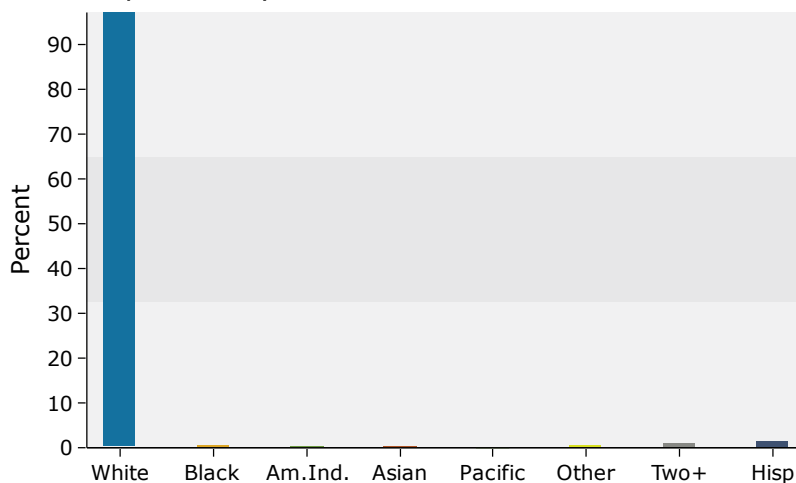
### Population by Age



### 2016 Household Income



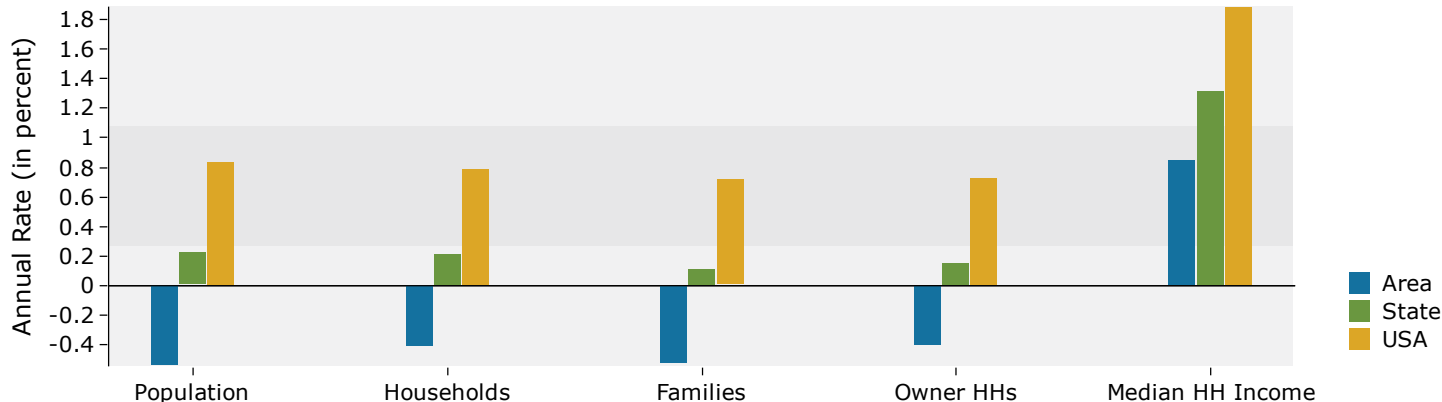
### 2016 Population by Race



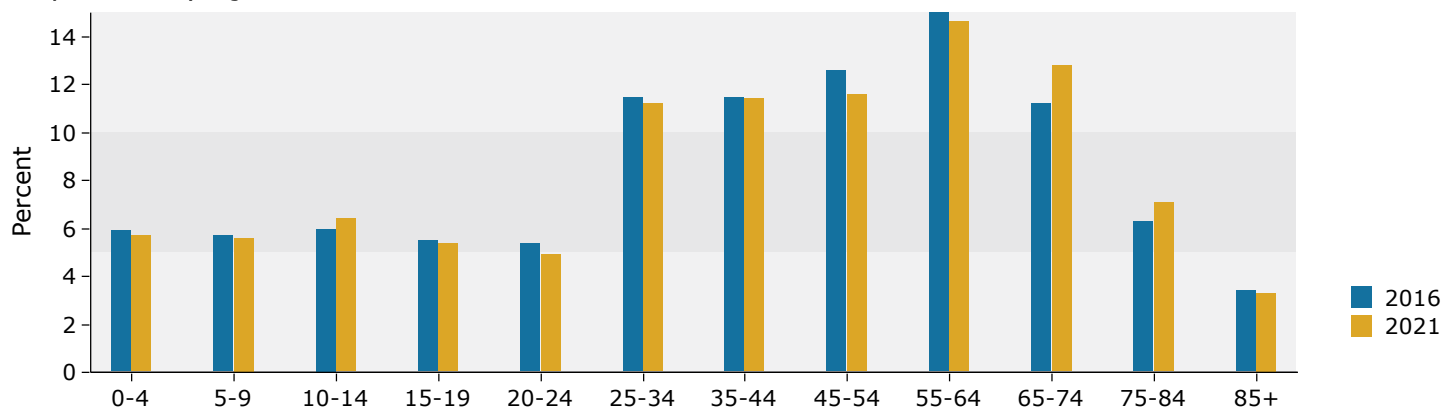
Source: U.S. Census Bureau, Census 2010 Summary File 1. Esri forecasts for 2016 and 2021.

## 5 miles

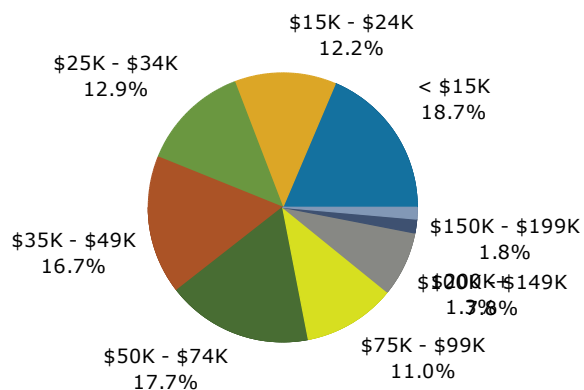
### Trends 2016-2021



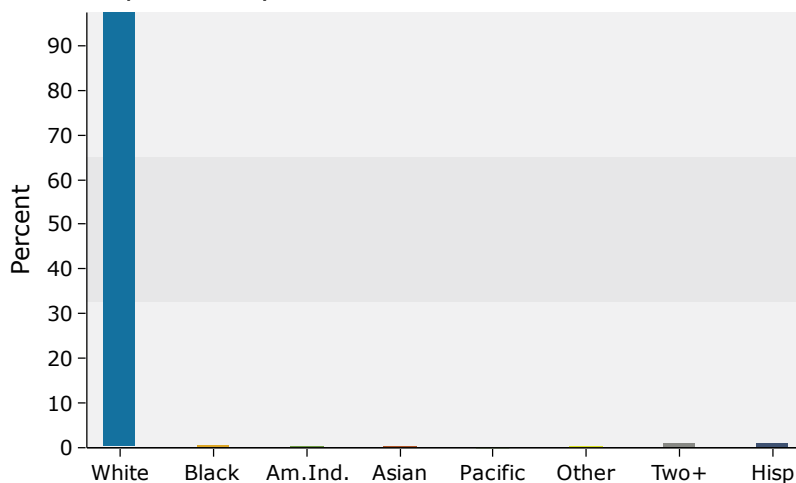
### Population by Age



### 2016 Household Income



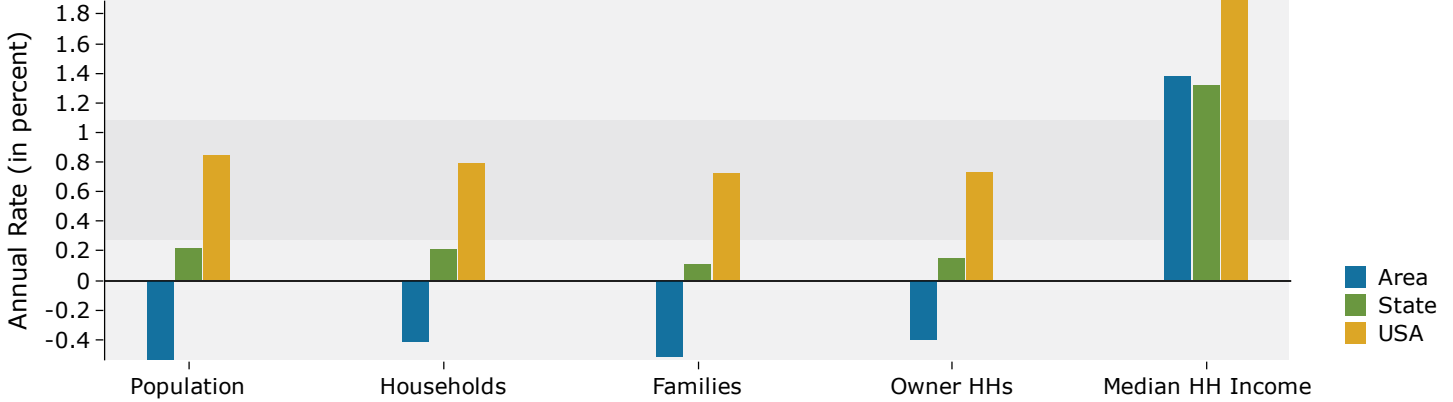
### 2016 Population by Race



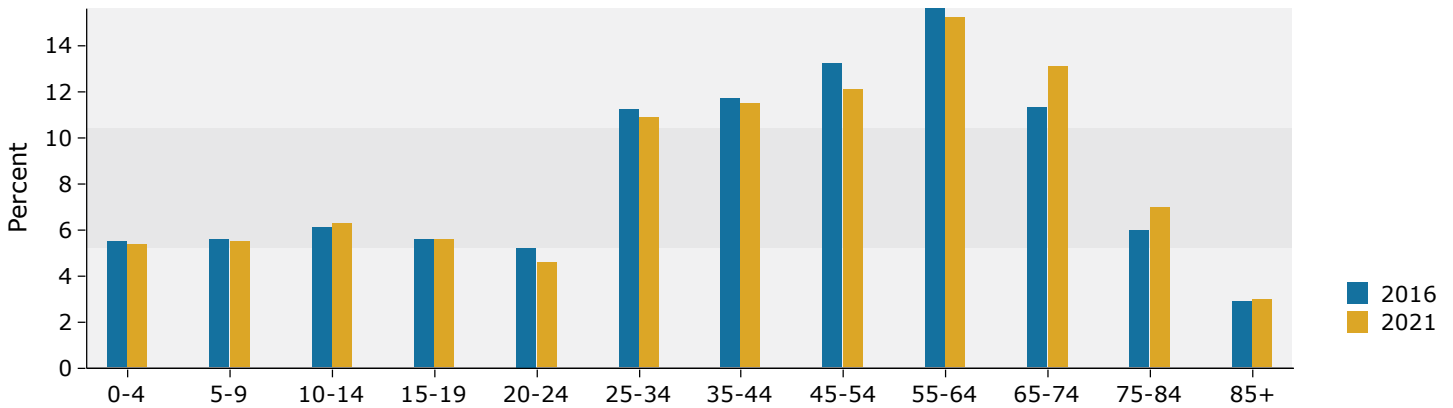
Source: U.S. Census Bureau, Census 2010 Summary File 1. Esri forecasts for 2016 and 2021.

## 10 miles

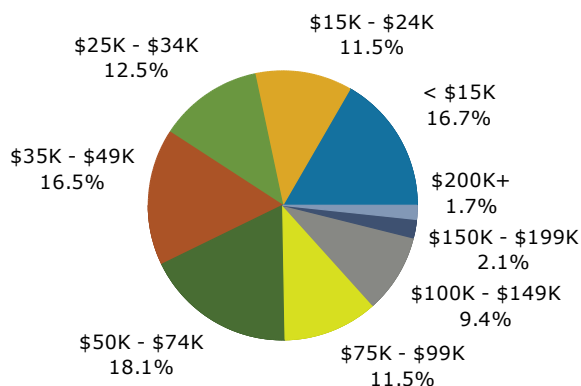
### Trends 2016-2021



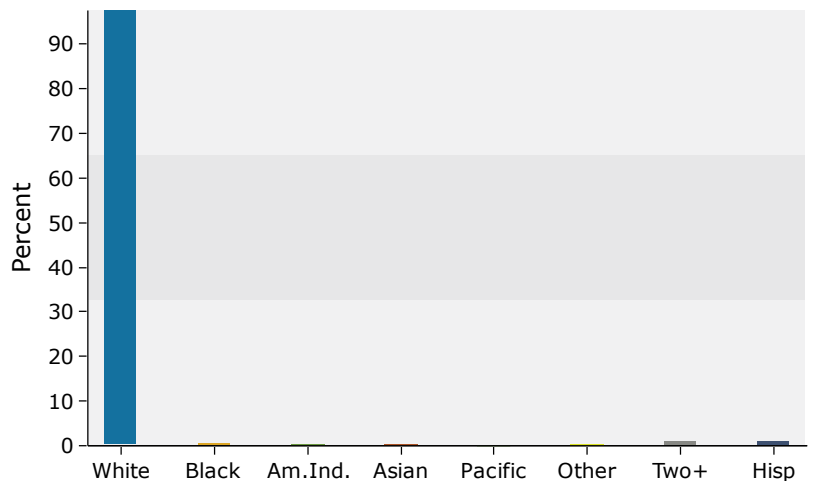
### Population by Age



### 2016 Household Income



### 2016 Population by Race



Source: U.S. Census Bureau, Census 2010 Summary File 1. Esri forecasts for 2016 and 2021.