

OFFICE SPACE AVAILABLE IN TEMPE

2111 E BASELINE ROAD | TEMPE, AZ 85283



FOR MORE INFORMATION CONTACT:

AARON NORWOOD

480.294.6016

anorwood@levrose.com

LEVROSE
COMMERCIAL REAL ESTATE

TCN
WORKSPACE
REAL ESTATE SERVICES

OFFICE SPACE AVAILABLE IN TEMPE

2111 E BASELINE ROAD | TEMPE, AZ 85283



AVAILABILITY

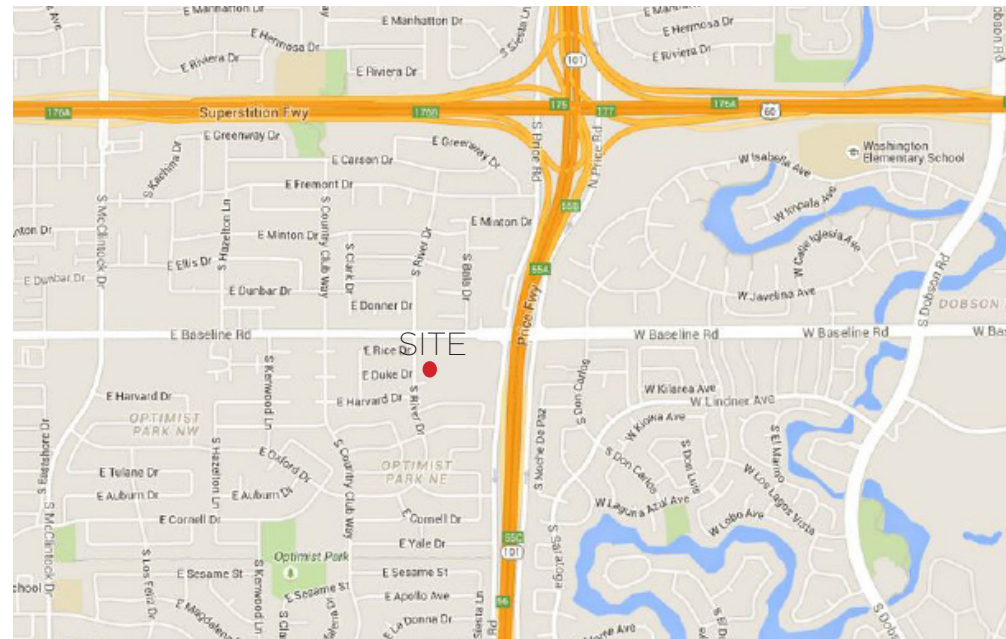
Suite F3: ±898 SF

LEASE RATE

\$16.00/Month, Full Service

HIGHLIGHTS

- Located just west of Loop 101 on Baseline Rd.
- Near local retail, restaurants, banking and hotels.
- Covered parking available.
- Janitorial 5 nights a week.



AARON NORWOOD
480.294.6016
anorwood@levrose.com

LEVROSE
COMMERCIAL REAL ESTATE

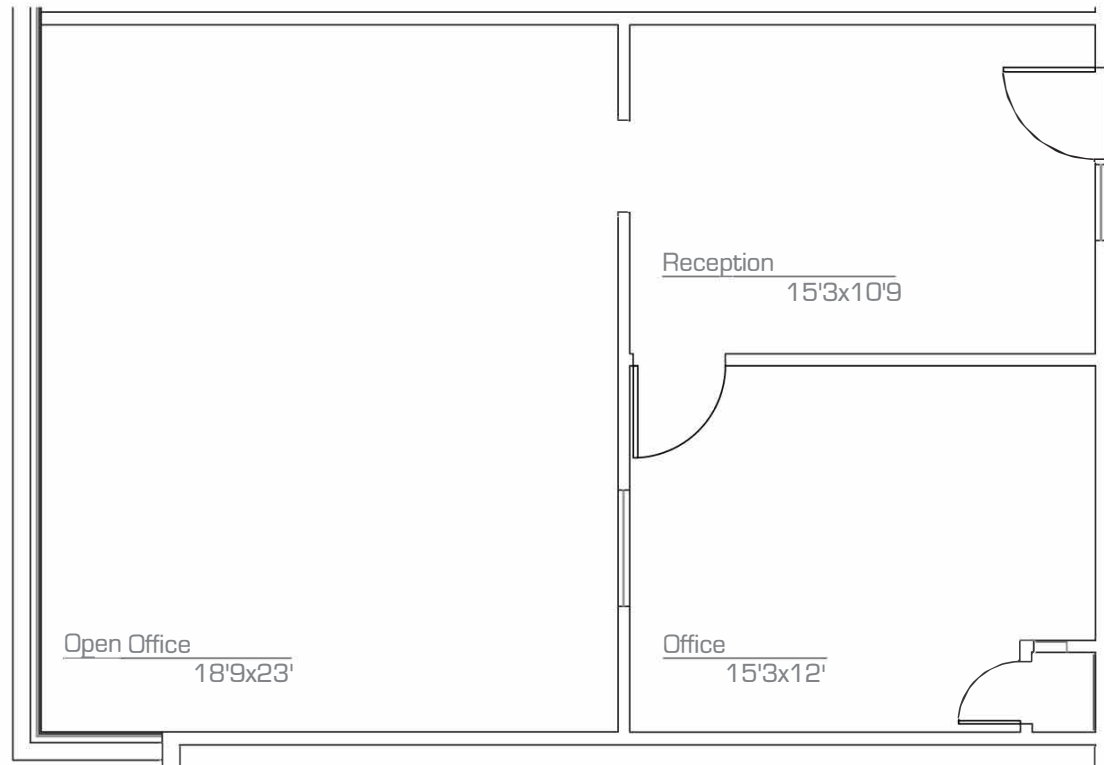


4414 N. Civic Center Plaza, Suite 100
Scottsdale, AZ 85251
T: 480.947.0600 | www.levrose.com

This information has been secured from sources believed to be reliable, but no representations or warranties are made, expressed or implied, as to the accuracy of the information. References to square footage are approximate. Buyer and tenant must verify the information and bears all risk for any inaccuracies. All quoted prices are subject to change without notice.

FLOOR PLAN- SUITE F3 | ±898 SF

2111 E BASELINE ROAD | TEMPE, AZ 85283



AARON NORWOOD
480.294.6016
anorwood@levrose.com

LEVROSE
COMMERCIAL REAL ESTATE



This information has been secured from sources believed to be reliable, but no representations or warranties are made, expressed or implied, as to the accuracy of the information. References to square footage are approximate. Buyer and tenant must verify the information and bears all risk for any inaccuracies. All quoted prices are subject to change without notice.