

# RETAIL SPACE AVAILABLE



## LOCATION

Interstate 205 & SE Washington Street  
Portland, OR 97216

## RETAIL SPACE AVAILABLE

2,450 Square Feet

## TRAFFIC COUNTS

I-205: 146,300 ADT  
SE Washington Street (E): 21,531 ADT  
SE Stark Street (W): 22,903 ADT

## AREA RETAILERS INCLUDE:



The information contained herein has been obtained from sources deemed to be reliable, nonetheless, a prospective purchaser or lessee should verify all information to his or her satisfaction.

# 205 PLACE

**NEW & NEVILLE**  
REAL ESTATE SERVICES



# PROPERTY DETAILS



## Property Highlights

- Located off I-205 (146,300 VPD) at Washington Street (21,531 VPD) Exit
- Great visibility to Interstate 205, SE Washington St, & SE Stark St
- Adjacent to Mall 205 anchored by The Home Depot, Target, 24 Hour Fitness and Bed Bath & Beyond
- Adjacent to MAX Light Rail stop
- Adjacent to Adventist Medical Center

## Demographics

	3 Mile	5 Mile
Population	196,889	429,850
Projected Population ('20)	205,850	449,629
Est. Households	77,737	172,474
Median Age	36.6	36.5
Bachelor Degree +	35.6%	39.5%
Average HH Income	\$61,143	\$65,682
Median HH Income	\$49,652	\$53,018
Area Businesses	7,384	18,534
Daytime Population	60,332	180,812
Median Home Value ('10)	\$253,058	\$278,505

\*2015 data, unless specified

## Property Details

205 Place is located at the intersection of Interstate 205 (146,300 VPD) and SE Washington Street (21,531 VPD), just west of Mall 205. Co-tenants include Portland Seafood Company, McMenemy's, OnPoint Community Credit Union, and Sleep Train.

The Mall 205 trade area contains well-established neighborhoods with an excellent daytime population.

The site is adjacent to the 436,362 square foot Mall 205 anchored by Home Depot, Target, 24 Hour Fitness and Bed Bath & Beyond. The site is also adjacent to a MAX light rail stop and the Adventist Hospital and Medical Center (2,500 employees).

The area is a regional destination as it is located near the intersections of I-205 and I-84 with the residential density exceeding most areas of the metropolitan area. Additional retail in the vicinity includes the 172,500 square foot Plaza 205 located just east of Mall 205 and the 378,000 square foot Kohl's/Fred Meyer anchored Gateway Center located north of Mall 205.

The trade area consists of 19,975 residents within a one-mile radius and 196,889 residents within a three-mile radius with average household incomes of \$53,438 and \$61,143 respectively. In addition, there are 60,332 employees within a three-mile radius.

There is currently one 2,450 square foot space available for lease at 205 Place.



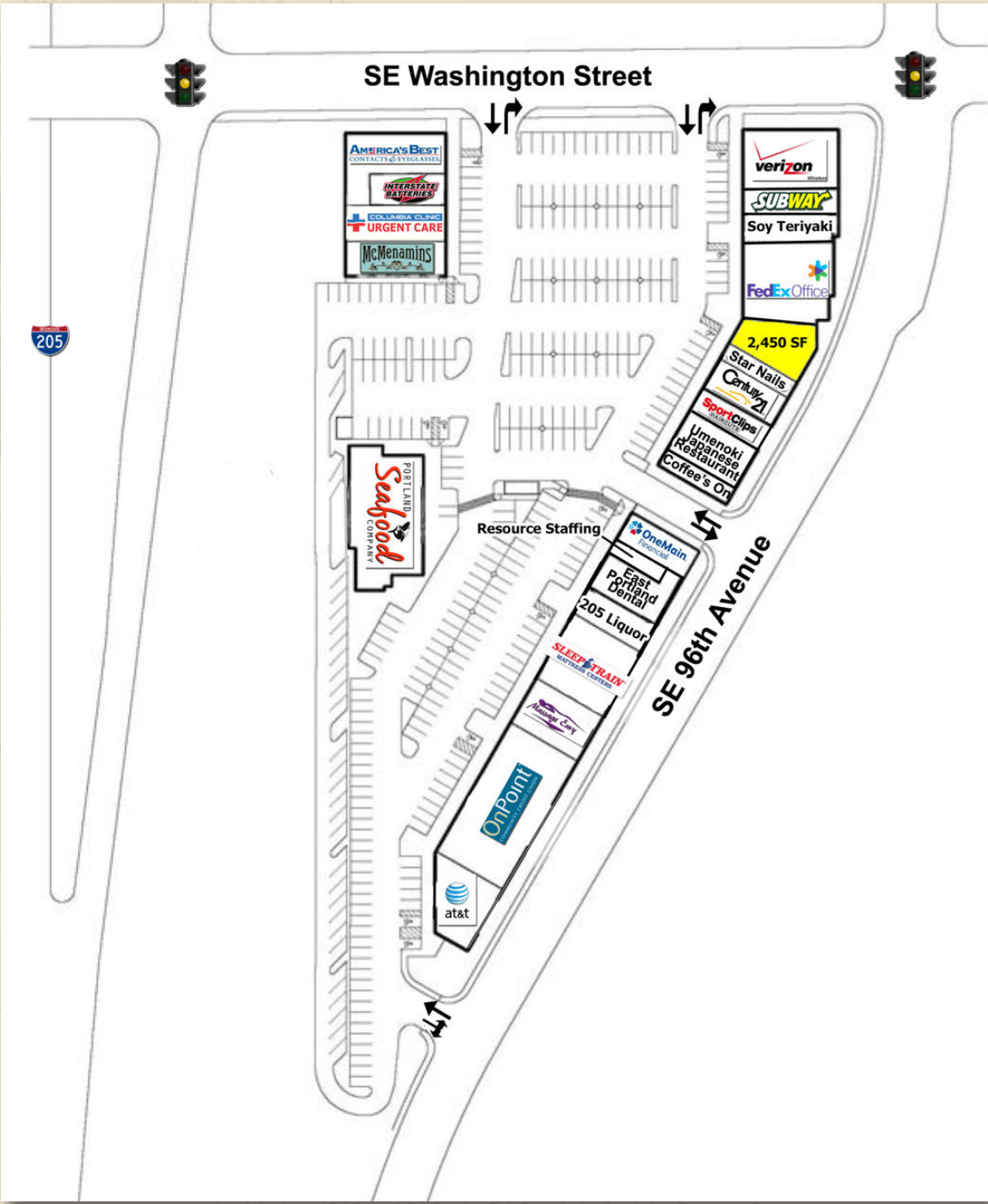
The information contained herein has been obtained from sources deemed to be reliable, nonetheless, a prospective purchaser or lessee should verify all information to his or her satisfaction.

# 205 PLACE

**NEW & NEVILLE**  
REAL ESTATE SERVICES



# PROPERTY INFORMATION



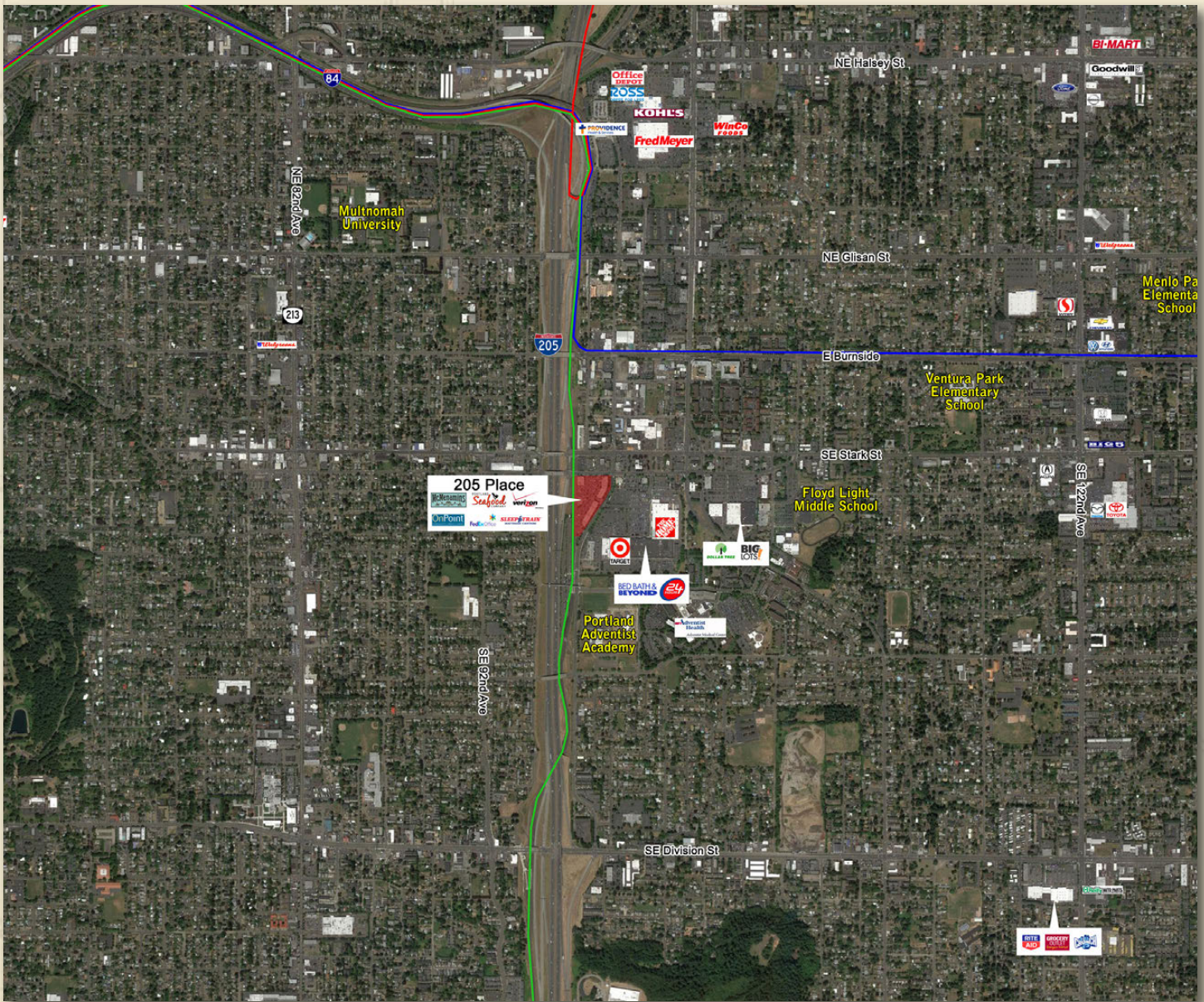
The information contained herein has been obtained from sources deemed to be reliable, nonetheless, a prospective purchaser or lessee should verify all information to his or her satisfaction.

# 205 PLACE

**NEW & NEVILLE**  
REAL ESTATE SERVICES

**X TEAM**  
INTERNATIONAL  
EXTENSIVE EXPERIENCE  
EXCLUSIVELY RETAIL

# RETAIL SPACE AVAILABLE



**NEW  
& NEVILLE**  
REAL ESTATE SERVICES

For More Information  
Please Contact:

900 SW 13th Ave, Suite 210  
Portland, OR 97205  
Phone: 503-241-1222  
Fax: 503-226-0424

Website: [www.newneville.com](http://www.newneville.com)

The information contained herein has been obtained from sources deemed to be reliable, nonetheless, a prospective purchaser or lessee should verify all information to his or her satisfaction.

## 205 PLACE

**NEW  
& NEVILLE**  
REAL ESTATE SERVICES

