

**RATE: NEGOTIABLE**



# Former Bank Branch For Sublease

2000 Big Timber Rd, Elgin, IL 60123



For details on this property and others available nationwide visit:  
[www.BankingCentersForSale.com](http://www.BankingCentersForSale.com)

## Highlights

Building SF: +/- 11,085 SF (Main Level)  
+/- 908 SF (Basement)

Land AC: +/- 2.04

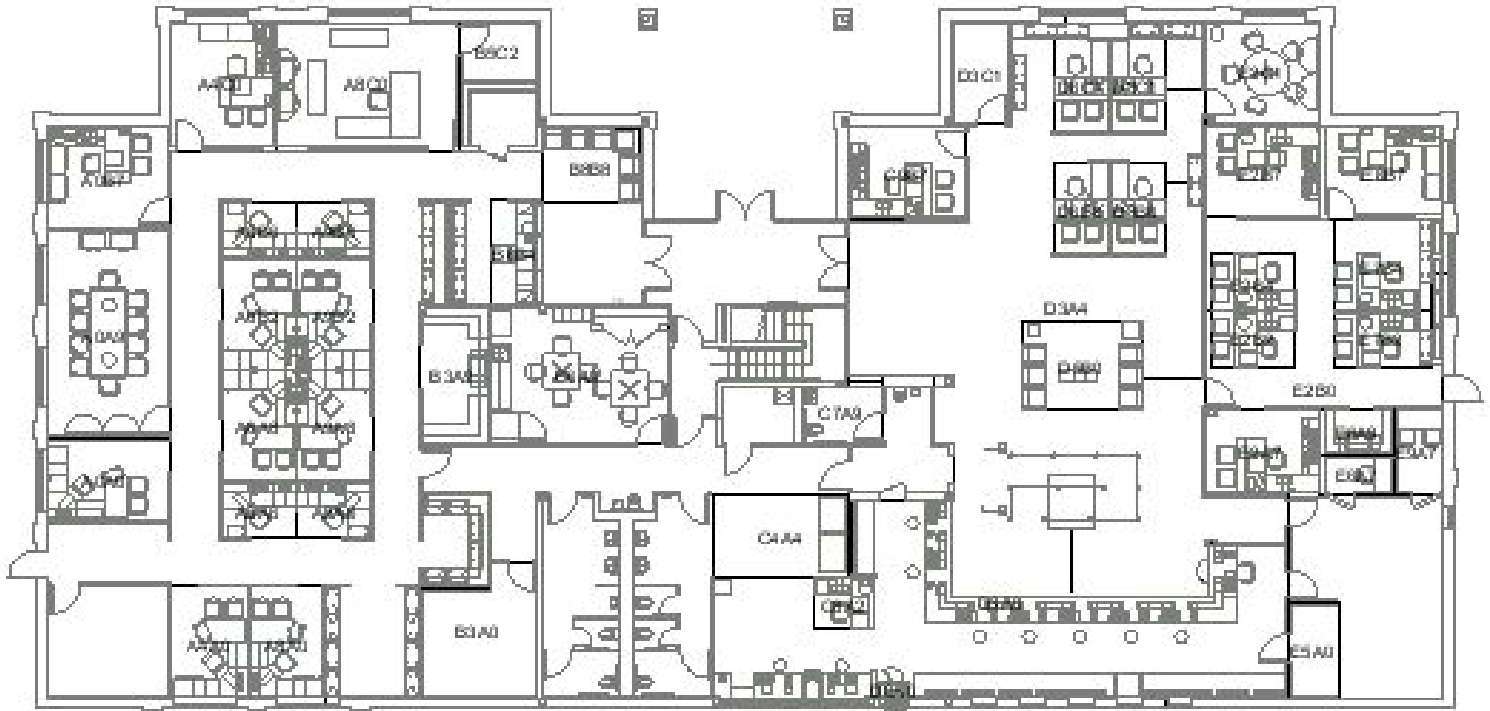
Parking: +/- 69 Stalls

4 Drive Thru Lanes

FOR MORE INFORMATION  
REGARDING THIS PROPERTY,  
PLEASE CONTACT:

Grace Lewin  
JLL  
1.855.483.2982 (toll free)  
[Grace.Lewin@am.jll.com](mailto:Grace.Lewin@am.jll.com)

**IL4-418 01F**



<b>Demographics</b>	<b>1 mile</b>	<b>3 miles</b>	<b>5 miles</b>
<i>2014 Population</i>	<b>7,773</b>	<b>63,984</b>	<b>162,791</b>
<i>2014 Households</i>	<b>2,921</b>	<b>21,738</b>	<b>54,017</b>
<i>2014 AVG House Income</i>	<b>\$78,172</b>	<b>\$82,061</b>	<b>\$86,196</b>

Grace Lewin

JLL

1.855.483.2982 (toll free)

Grace.Lewin@am.jll.com



**DISCLAIMER**

Although information has been obtained from sources deemed reliable, Owner, Jones Lang LaSalle, and/or their representatives, brokers or agents make no guarantees as to the accuracy of the information contained herein, and offer the Property without express or implied warranties of any kind. The Property may be withdrawn without notice. If the recipient of this information has signed a confidentiality agreement regarding this matter, this information is subject to the terms of that agreement. ©2015. Jones Lang LaSalle. All rights reserved.