

610 COMMERCE CENTER I

MINNEAPOLIS
NORTHWEST

7200 93rd Ave N
Brooklyn Park, MN



FOR LEASE

Suite 190

± 61,758 SF



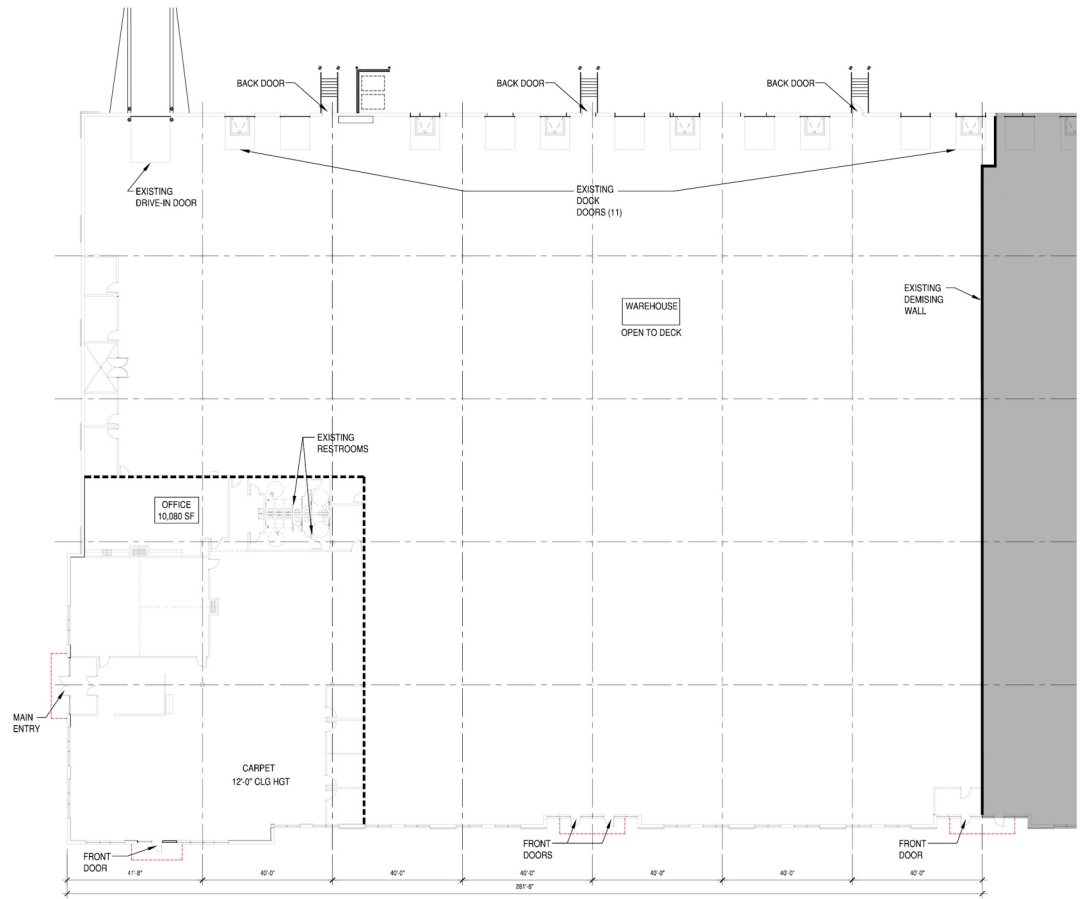
LEASED BY



SUITE 190 FLOOR PLAN

10,080 SF Office
 51,678 SF Warehouse
 61,758 SF Total

11 dock doors | 1 drive-in door



HEADLINE

State of the art manufacturing building
 Fiber available to the site
 Conveniently located along the Hwy 610 corridor
 Decorative precast panel with rock face block and ribbon glass

Building Size: 202,131 SF

Land Area: 11.19 Acres

Year Built: 2014

Clear Height: 28'

Lease Rates: Negotiable

Loading 11 Dock Doors | 1 Drive-In

Tax/CAM \$4.91 PSF Total

CONTACT INFORMATION

7200 93rd Ave N
Brooklyn Park, MN

Jason Meyer

952 820 8735

jason.j.meyer@cushwake.com

Brent Masica

952 893 8231

brent.masica@cushwake.com

Danny McNamara

952 893 8895

danny.mcnamara@cushwake.com

This is not an offer or acceptance of an offer to lease space. A lease will only be offered or made in a written agreement signed by landlord. No representation or warranty of any kind is made by landlord unless set forth in a written definitive lease executed by the landlord.



LEASED BY

