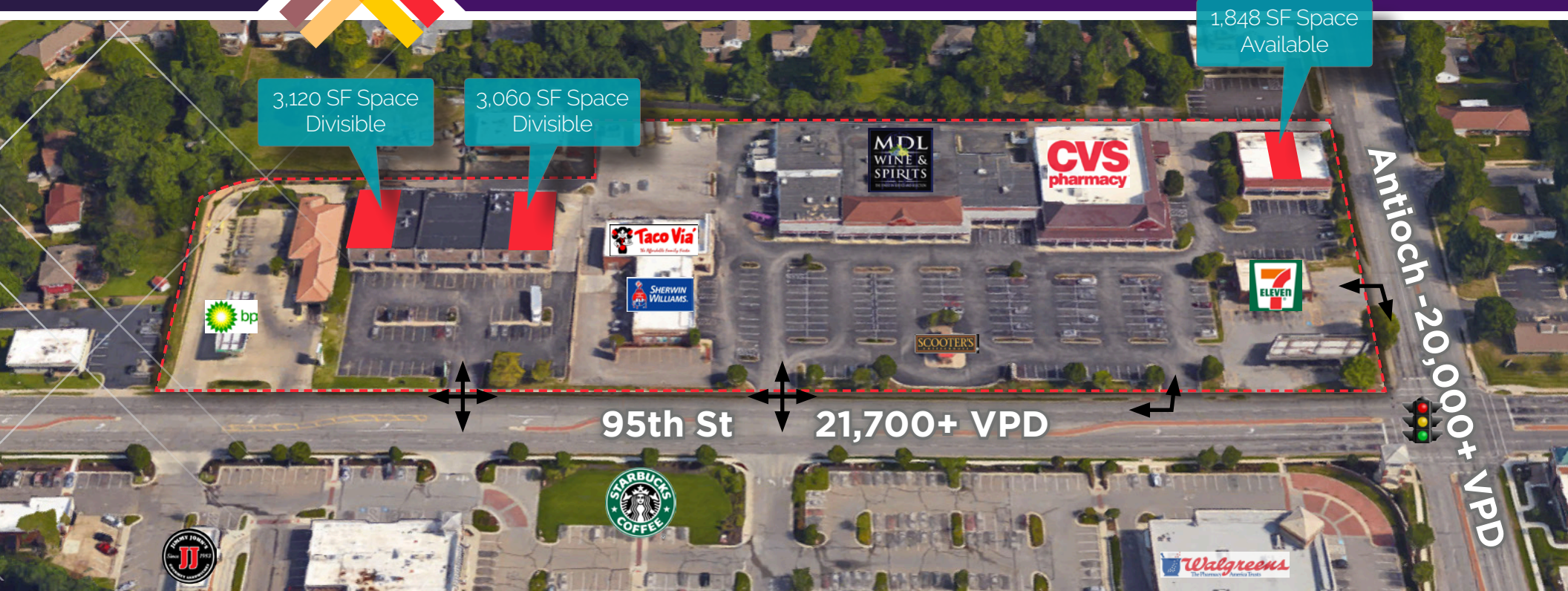


FOR LEASE

CHEROKEE NORTH SHOPPING CENTER

NWC 95th & Antioch | Overland Park, KS 66212



RETAIL/OFFICE SPACE AVAILABLE

- 1,530 - 3,120 SF suites available
- Best lease rate & lowest NNN at intersection
- Easy ingress/egress
- Abundant parking
- Highly visible from intersection with great signage opportunities
- Centrally located between Oak Park Mall, Corporate Woods, Metcalf & Overland Park's most dense neighborhood
- High traffic counts: 40K+ cars at intersection per day
- Nearby retail amenities: Hy-vee, CVS, Aldi's, MDL Wine & Spirits, Walgreen's, Johnny's Tavern & more

Owned & Managed by
MERRILL

JOHN NOLAN
jnolan@crossroadsretailgroup.com
(913) 486-9129

CROSSROADS
RETAIL GROUP

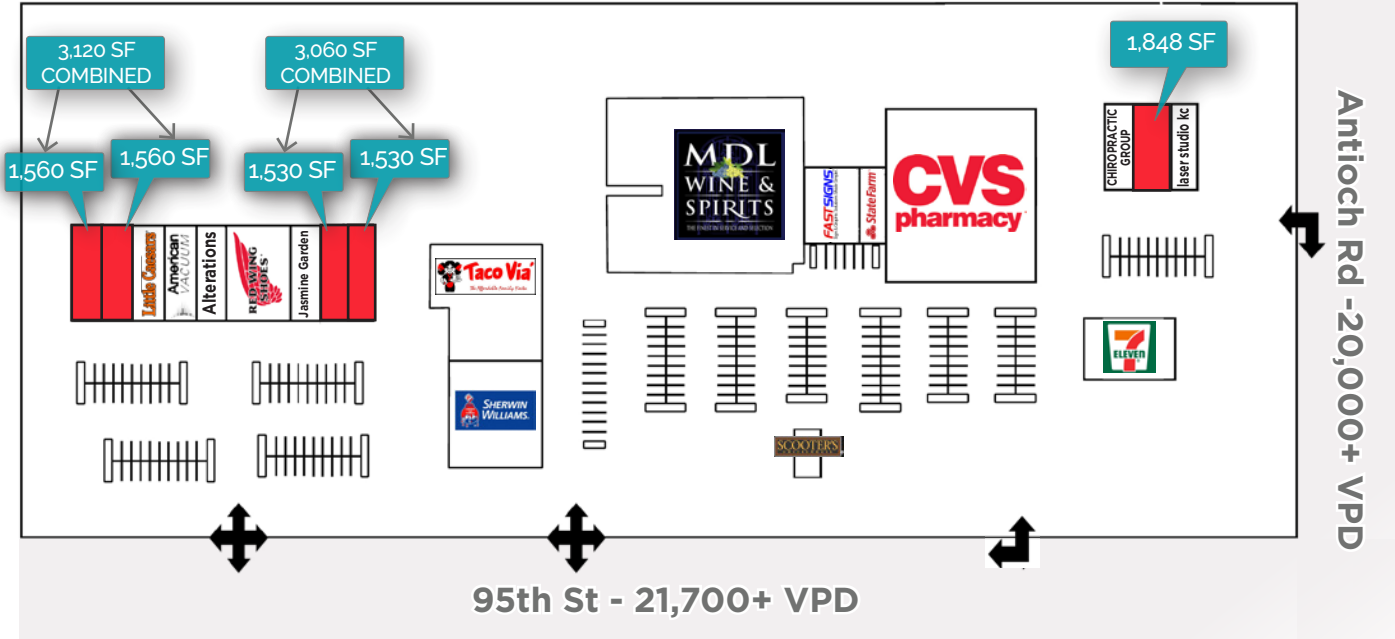
FOR LEASE



CHEROKEE NORTH SHOPPING CENTER

NWC 95th & Antioch | Overland Park, KS 66212

SITE PLAN



DETAILS

- Best lease rates at 95th & Antioch
- Easy ingress/egress
- Abundant parking
- Highly visible from intersection

AREA ATTRACTIONS

- Hy-vee / Hy-vee Gas
- CVS
- MDL Wine & Spirits
- Walgreen's
- Johnny's Tavern
- Aldi

AREA DEMOGRAPHICS

	1 mile	3 mile	5 mile
2016 Average HH Income	\$61,646	\$59,005	\$62,065
2016 Total Population	15,102	102,666	265,687
Total Est. Households	6,297	44,581	109,701
Median Age	48	47	47



Owned & Managed by
MERRILL

JOHN NOLAN
jnolan@crossroadsretailgroup.com
(913) 486-9129

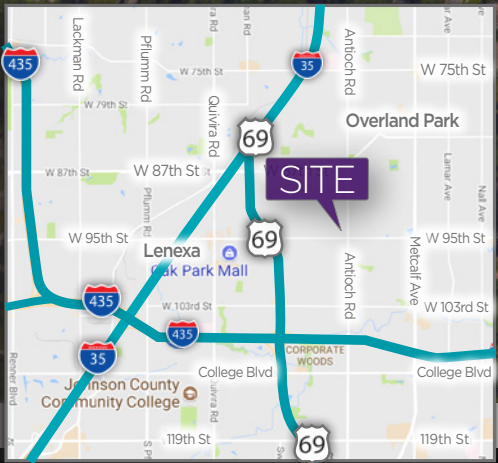
CROSSROADS
RETAIL GROUP

FOR LEASE



CHEROKEE NORTH SHOPPING CENTER

NWC 95th & Antioch | Overland Park, KS 66212



Owned & Managed by
MERRILL

JOHN NOLAN
jnolan@crossroadsretailgroup.com
(913) 486-9129

CROSSROADS
RETAIL GROUP

FOR LEASE



CHEROKEE NORTH SHOPPING CENTER

NWC 95th & Antioch | Overland Park, KS 66212



Owned & Managed by
MERRILL

JOHN NOLAN
jnolan@crossroadsretailgroup.com
(913) 486-9129

CROSSROADS
RETAIL GROUP