



## Industrial Office Space in Ross Industrial Park

This versatile space offers a functional mix of main-floor and second-floor office areas paired with a large, bright warehouse designed for efficiency. Featuring both dock and grade loading, the property accommodates a wide range of operational needs.

Located in Ross Industrial Park, the property provides excellent access to Ring Road and major transportation routes. Fenced compound space can be added, offering secure outdoor storage or fleet accommodation. This is a prime opportunity for businesses seeking adaptable space in a strategic, well-connected location.



Available Area:  
3,670 sf



Asking lease rate:  
\$12.00 psf



Fenced compound space  
available if required



Both dock and grade  
level loading



Possession upon  
completion of documents

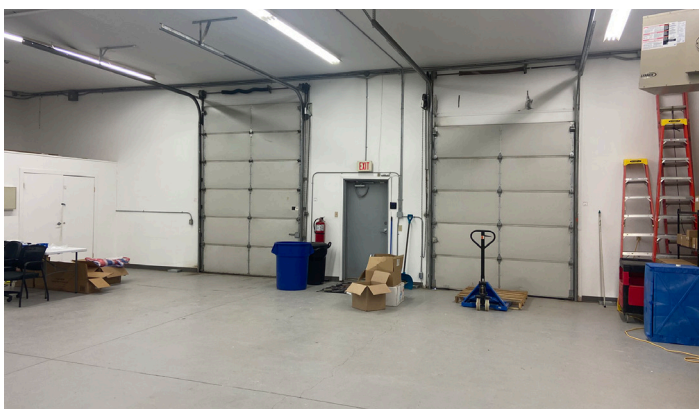
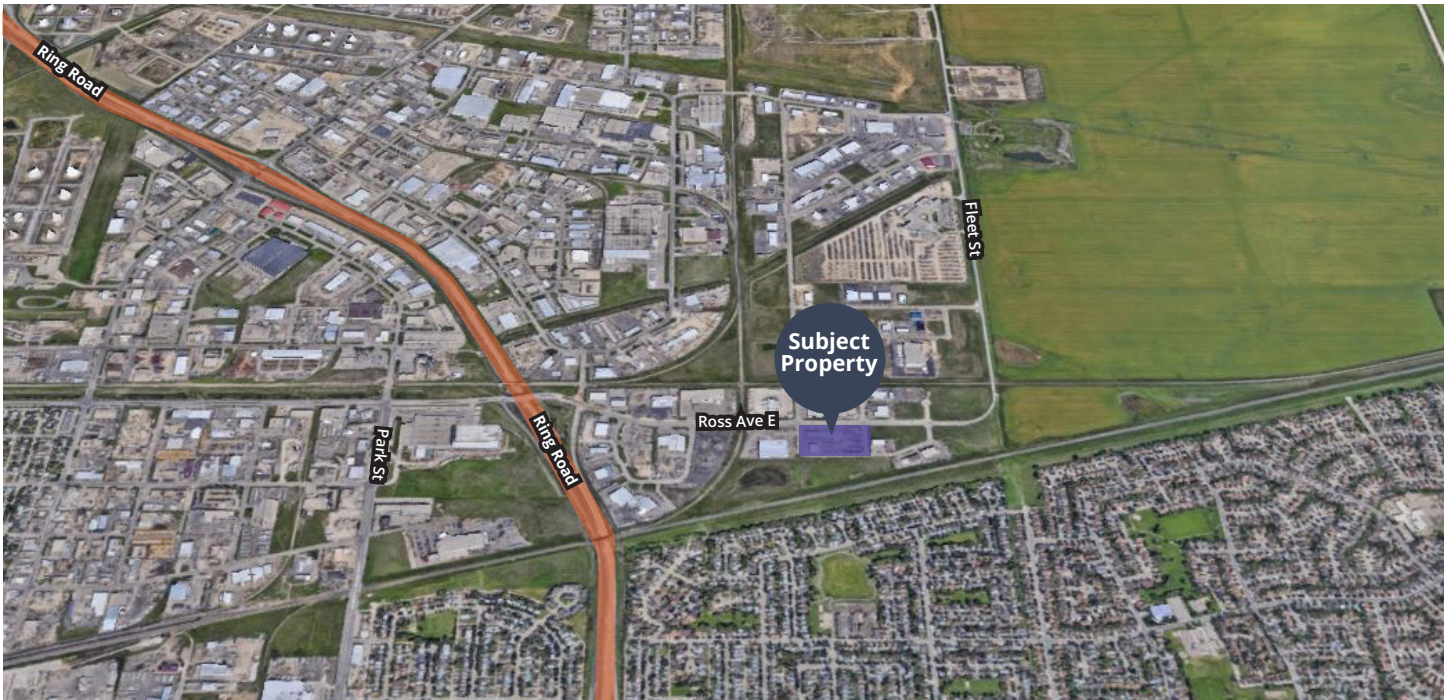
**For further  
information**

**Steve Jordan** Sale & Leasing  
306 559 9012  
steve.jordan@avisonyoung.com

avisonyoung.com

# Industrial Office Space For Lease

1731 Ross Avenue East; Unit 4  
Regina, SK S4N 7K2

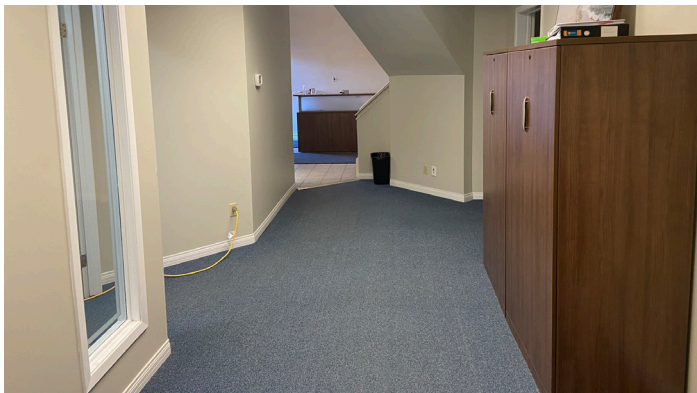


**Steve Jordan** Sale & Leasing  
306 559 9012  
steve.jordan@avisonyoung.com



# Industrial Office Space For Lease

1731 Ross Avenue East; Unit 4  
Regina, SK S4N 7K2



**Steve Jordan** Sale & Leasing  
306 559 9012  
steve.jordan@avisonyoung.com

