

400 SOUTH OAK WAY  
9,737-19,643 SQ FT



GreenPark   
a mapletree property

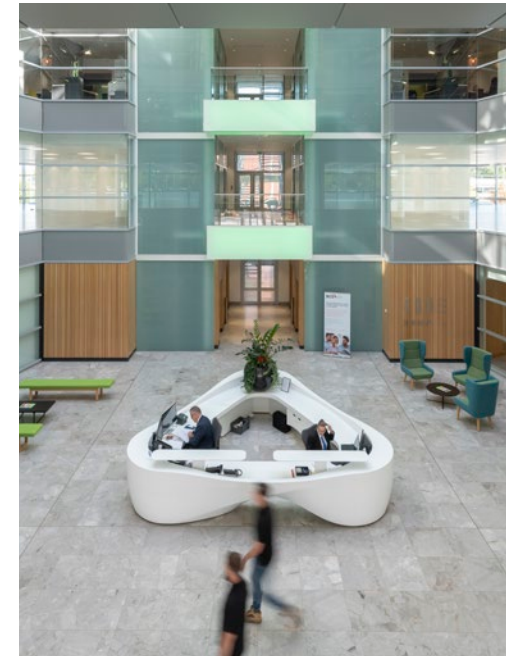




## 400 SOUTH OAK WAY

Overflowing with natural light from floor-to-ceiling windows, this versatile headquarters gives your staff an inspiring space to work.

It's highly visible from the M4 - amplifying your business presence.



### SPECIFICATION INCLUDES

- Four pipe fan coil air conditioning
- Fully accessible raised floors
- LED lighting
- Flexible range of CAT A finishes available
- 400 car parking spaces (1:247 sq ft)
- Showers and bike racks
- Four x 13 person glass scenic lifts
- One goods lift
- Imposing full height atrium
- 24 hour security on the Park
- BREEAM Excellent
- EPC - B



# AVAILABLE SPACE



Schedule of availability		sq ft	sq m	Parking
First floor	East Wing	9,906	920	40
	West Wing	9,737	905	39
<b>Total</b>		<b>19,643</b>	<b>1,825</b>	<b>79</b>

Current occupiers of 400 South Oak Way



## First floor

