

LEASE

104 CHURCH STREET
104 Church Street Torrington, CT 06790



PROPERTY DESCRIPTION

Coldwell Banker Commercial Realty presents for lease 104 Church Street, located in Torrington, Connecticut. This beautifully renovated 1,700 SF Office space is located on the first floor and offers original hardwood floors and millwork. Located about a quarter of a mile to the Litchfield County Court House, the property offers both on-street and off-street parking. Minutes away from downtown restaurants and entertainment. A newly renovated second-floor apartment may also be available, making for an ideal live/work arrangement.

PROPERTY HIGHLIGHTS

- First-Floor Unit
- Renovated in 2022
- Hardwood Floors and Millwork
- Close to Litchfield County Court House
- Excellent Parking
- Minute to Downtown

OFFERING SUMMARY

Lease Rate:	\$2,000.00 per month (MG)
Number of Units:	2
Available SF:	1,700 SF
Lot Size:	0.26 Acres
Building Size:	3,191 SF

DEMOGRAPHICS	1 MILE	3 MILES	5 MILES
Total Households	4,265	15,536	22,265
Total Population	9,621	35,673	52,318
Average HH Income	\$47,885	\$57,417	\$63,970

Mario Longobucco
860 307 5945
mario.longobucco@cbcncr.com



COLDWELL BANKER
COMMERCIAL
REALTY

LEASE

104 CHURCH STREET
104 Church Street Torrington, CT 06790



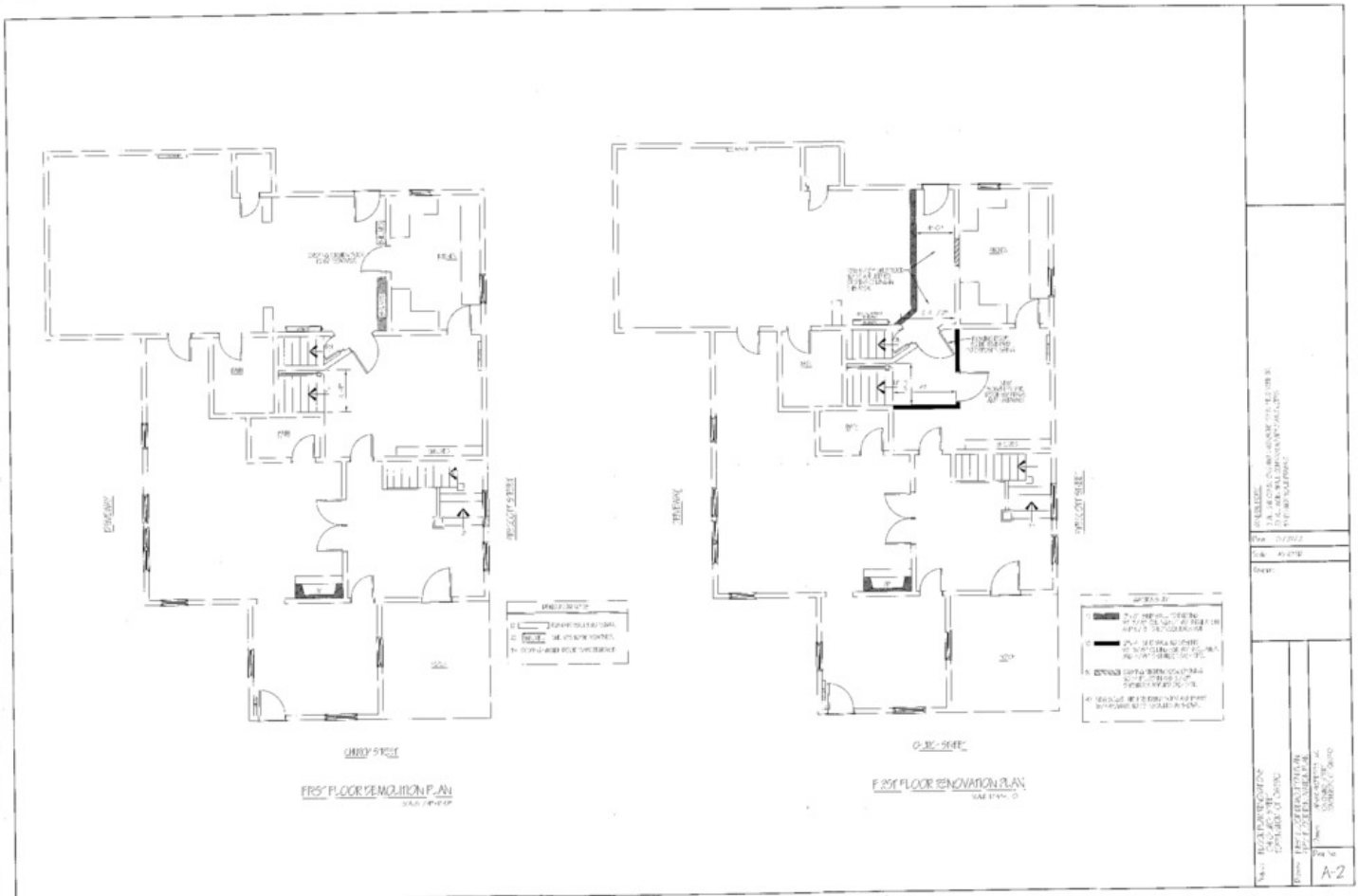
Mario Longobucco
860 307 5945
mario.longobucco@cbcnr.com



COLDWELL BANKER
COMMERCIAL
REALTY

LEASE

104 CHURCH STREET
104 Church Street Torrington, CT 06790



Mario Longobucco
860 307 5945
mario.longobucco@cbcnrt.com

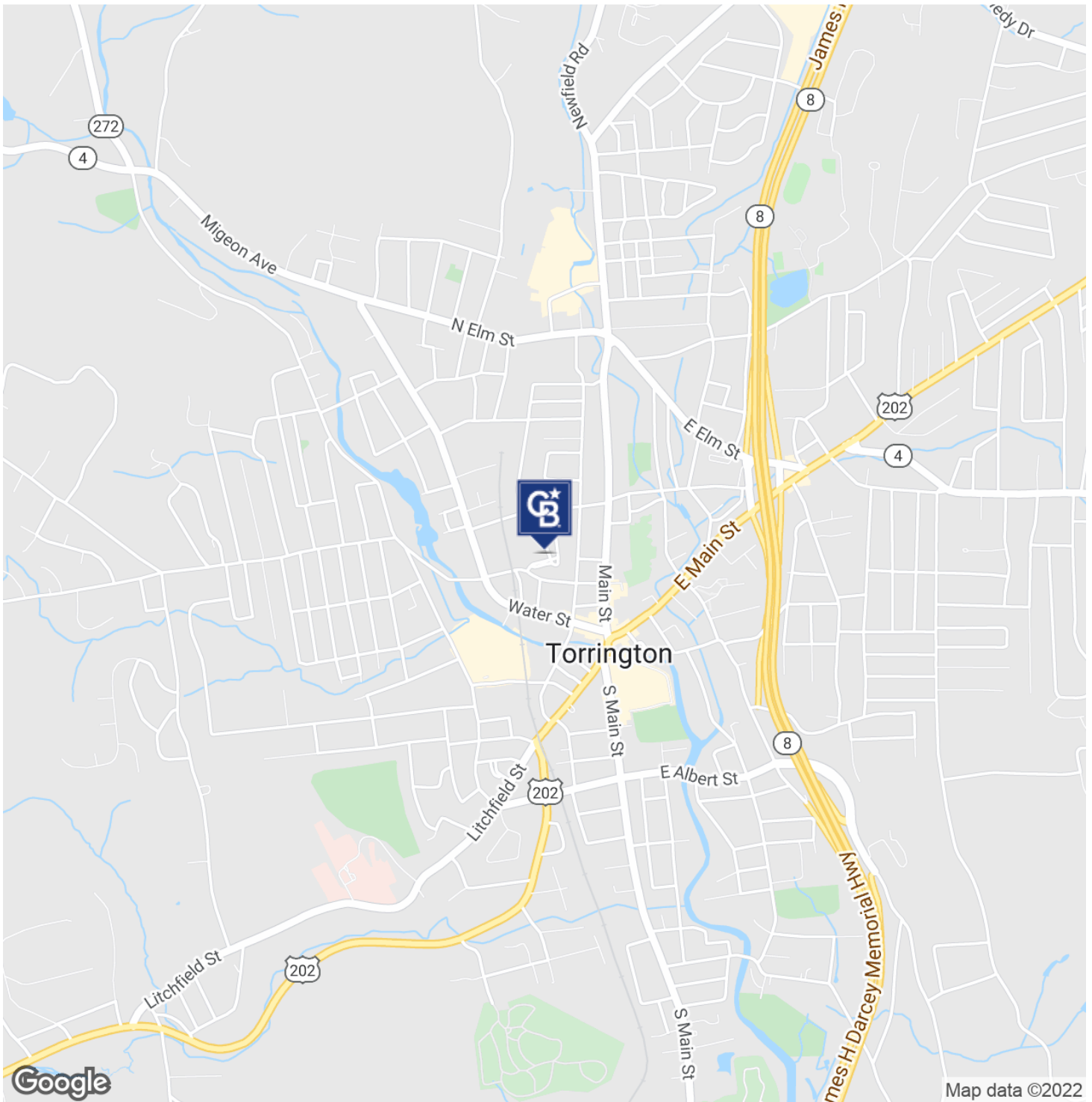


COLDWELL BANKER
COMMERCIAL
REALTY

LEASE

104 CHURCH STREET

104 Church Street Torrington, CT 06790



Mario Longobucco
860 307 5945
mario.longobucco@cbcncr.com



COLDWELL BANKER
COMMERCIAL
REALTY