

FOR SALE OR LEASE

SMALL OFFICE SUITES AVAILABLE

10420

OLD OLIVE STREET ROAD

Creve Coeur, MO 63141



PROPERTY FEATURES

- + 24,000± SF, three story building
 - Suites 100 & 102: 1,085 and 1,704 RSF available (2,789 RSF Total)
 - Suite 105: 698 RSF
 - 3rd Floor: 4,786 RSF and 3,579 RSF Available
- + 5+/1,000 SF parking. Structured parking available via cross access agreement.
- + Renovated building lobby
- + Building/monument signage available
- + Walking distance to numerous restaurants:
 - Panda Express
 - Moe's Southwest Grill
 - Kohn's Kosher Deli
 - Seoul Garden
- + Olive Boulevard visibility
- + Signalized access to Olive Boulevard

LEASE RATE: \$18.50 PER RSF, FULL SERVICE



CONTACT INFO

TOM RAY

First Vice President
+1 314 655 6012
tom.ray@cbre.com

CBRE, INC.

190 Cardondelt Plaza
Suite 1400
St. Louis, MO 63105

www.cbre.com/stlouis

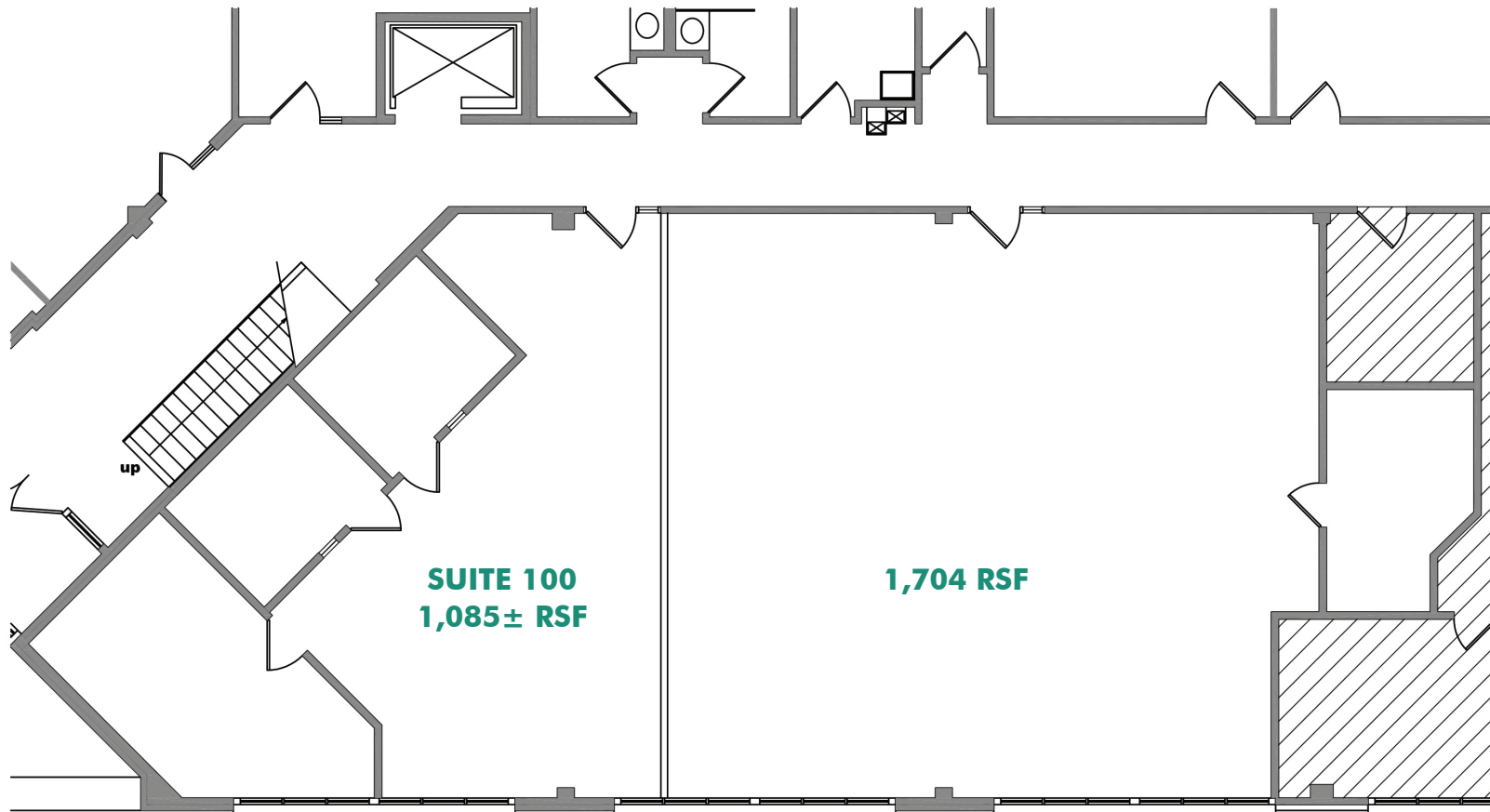
CBRE

FOR SALE OR LEASE
SMALL OFFICE SUITES AVAILABLE

10420
OLD OLIVE STREET ROAD
Creve Coeur, MO 63141



FIRST FLOOR PLAN
2,789± RSF



www.cbre.com/stlouis

CBRE

FOR SALE OR LEASE
SMALL OFFICE SUITES AVAILABLE

10420
OLD OLIVE STREET ROAD
Creve Coeur, MO 63141



THIRD FLOOR PLAN



FOR SALE OR LEASE SMALL OFFICE SUITES AVAILABLE

10420
OLD OLIVE STREET ROAD
Creve Coeur, MO 63141



RETAIL AMENITIES



© 2021 CBRE, Inc. All rights reserved. This information has been obtained from sources believed reliable, but has not been verified for accuracy or completeness. You should conduct a careful, independent investigation of the property and verify all information. Any reliance on this information is solely at your own risk. CBRE and the CBRE logo are service marks of CBRE, Inc. All other marks displayed on this document are the property of their respective owners. Photos herein are the property of their respective owners. Use of these images without the express written consent of the owner is prohibited.

www.cbre.com/stlouis

CBRE