

LIGHTING FIXTURE SCHEDULE

TYPE	LAMP	WATTAGE FIXTURE	DESCRIPTION
A	2-32 T8	70	FLUORESCENT, NARROW, SURFACE MTD., ACRYLIC MINIMUM PRISMATIC LENS, WHITE FINISH, 120V
E	2-6 H. I. T.	15	EMERGENCY LIGHTING 6-VOLT BATTERY PACK, 2 LIGHTING HEADS, 120V, WALL MTD.
E1	2-12 LED	24	COMBINATION EMERGENCY LIGHT/EXIT SIGN, LED, NICKEL CADMIUM BATTERY, 120V
E1	4-6 LED	24	COMBINATION EMERGENCY LIGHT/EXIT SIGN, LED, NICKEL CADMIUM BATTERY, 120V (WITH 2 REMOTE LIGHT HEADS AS NEEDED)

NOTES:

1. INCANDESCENT LAMPS TO BE 130 VOLT.
2. SUPPORT EACH LIGHT FIXTURE INDEPENDENTLY FROM STRUCTURE.
3. ALL FIXTURES TO USE 1-BALLAST UNLESS OTHERWISE NOTED.

NOTE

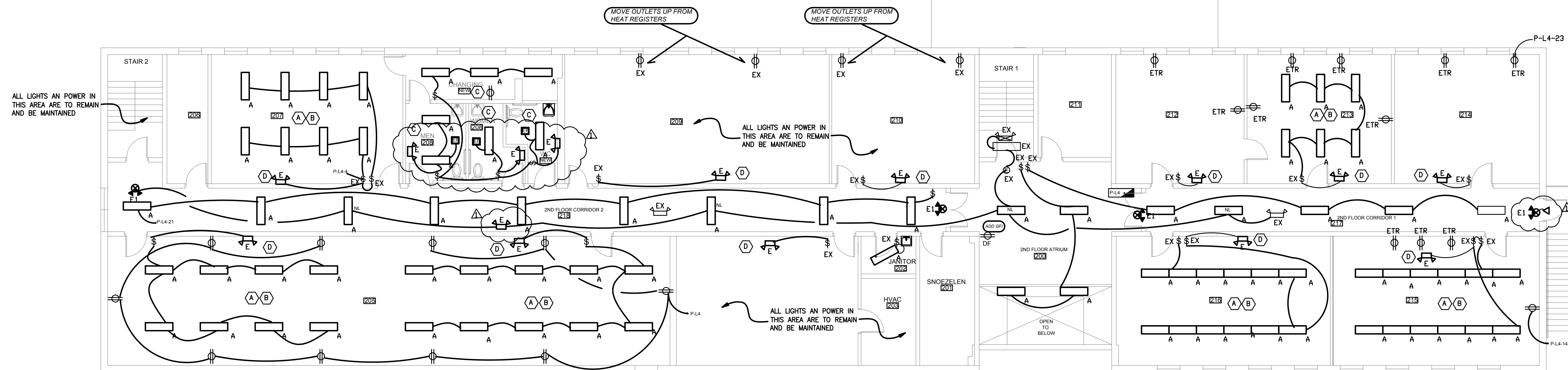
ALL EXISTING AND NEW RECEPTACLES IN CLASS ROOM S AND COMMON AREAS THAT ARE ACCESSIBLE TO CHILDREN SHALL BE TAMPER PROOF TYPE.

NOTES:

- (A) REWIRE NEW LIGHTS WITH 2-#12, #12 G., 3/4" C. TO EXISTING LIGHT CIRCUIT AS SHOWN
- (B) NEW SURFACE MOUNT LIGHTS TO REPLACE EXISTING
- (C) NEW LIGHTS AND EXHAUST FANS. REUSE EXISTING LIGHT CIRCUIT
- (D) NEW EMERGENCY LIGHT WIRED TO EXISTING LIGHTS BEFORE SWITCH
- (E) WIRE TO EXISTING RECEPTACLE CIRCUIT

ELECTRICAL KEY			
	LIGHT		POLE LIGHT 2 HEAD 400 W MV
	SWITCH		FLOOD LIGHT WITH PHOTO EYE
	ELECTRIC PANEL		175W MERCURY VAPOR W/ PHOTO EYE
	48" x 2 LAMP G.S. MTD. FLUORESCENT FIXTURE		12" SQUARE RECESS 60W INCANDESCENT
			LIGHT CONTACTOR
	DISCONNECT		EXIT
	DUPLEX OUTLET 120V		EGRESS EXIT COMBO
	QUAD OUTLET 120V		EGRESS LIGHT
	MOTOR STARTER		EXHAUST FAN
	POLE LIGHT 1 HEADS 400W MV		CIRCULATING PUMP
	BARN LIGHT 175W MV WITH PHOTO EYE		VAPOR PROOF 100W INCANDESCENT
	100 CFM EXHAUST FAN		CLASS 100W INCANDESCENT
			2 X 4 LAY-IN 4 LAMP T-12
			T-8 LAMP
			3WAY SWITCH

EX EXISTING TO REMAIN
ETR EXISTING TO BE REMOVED WITH ALL ASSOCIATED WIRE AND CONDUIT



SECOND FLOOR POWER/LIGHTING PLAN

1/8" = 1'-0"

ISSUE / REVISIONS
09-18-15 EXISTING COND.
11-03-15 ELEC. DEMO AND RENOVATIONS
12-17-15 PERMITS
01-27-16 PER PLAN REVIEW

PROJECT NUMBER
4415

E-2

