

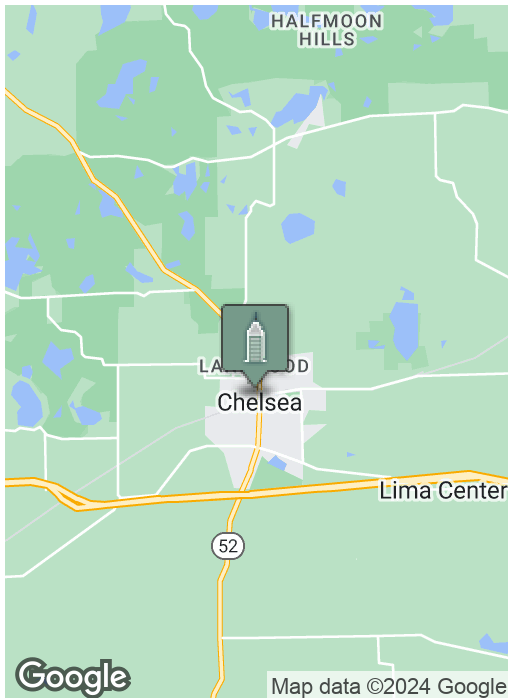
Turnkey Restaurant for Lease

110 W MIDDLE ST, CHELSEA, MI 48118



Swisher
COMMERCIAL

FOR LEASE



SUMMARY

Lease Rate:	\$5,750/MO Plus Utilities
Zoning:	C-5 (Central Business District)
Available SF:	2,640 SF
Renovated:	2020

PROPERTY OVERVIEW

Turnkey quick serve burger restaurant for lease. Former historic Seitz Tavern location in charming downtown Chelsea, and frontage on busy Middle Street located just west of M-52.

Main level of 1,320 square feet features hood in place, two ADA restrooms, high ceilings, and 6 dedicated parking spaces in the rear for carryout, outdoor seating, or food truck parking. Additional street and municipal lot parking behind building and within walking distance.

Lower level features walk in, dry storage, and prep area.

**Building
relationships.**

208 East Washington Street Ann Arbor, MI 48104

734.663.0501

Jeff Evans

734.926.0222

JEFFEVANS@SWISHERCOMMERCIAL.COM

SWISHERCOMMERCIAL.COM

Turnkey Restaurant for Lease

110 W MIDDLE ST, CHELSEA, MI 48118



**Building
relationships.**

208 East Washington Street Ann Arbor, MI 48104

734.663.0501

Jeff Evans

734.926.0222

JEFFEVANS@SWISHERCOMMERCIAL.COM

SWISHERCOMMERCIAL.COM

Turnkey Restaurant for Lease

110 W MIDDLE ST, CHELSEA, MI 48118



Building relationships.

208 East Washington Street Ann Arbor, MI 48104

734.663.0501

Jeff Evans

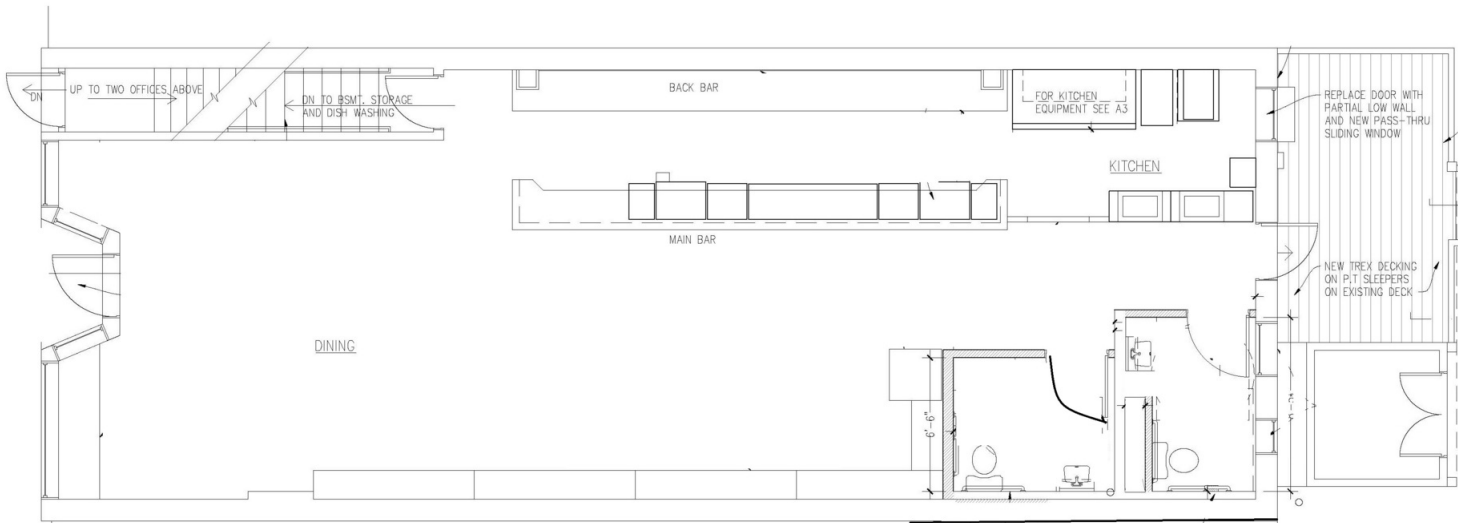
734.926.0222

JEFFEVANS@SWISHERCOMMERCIAL.COM

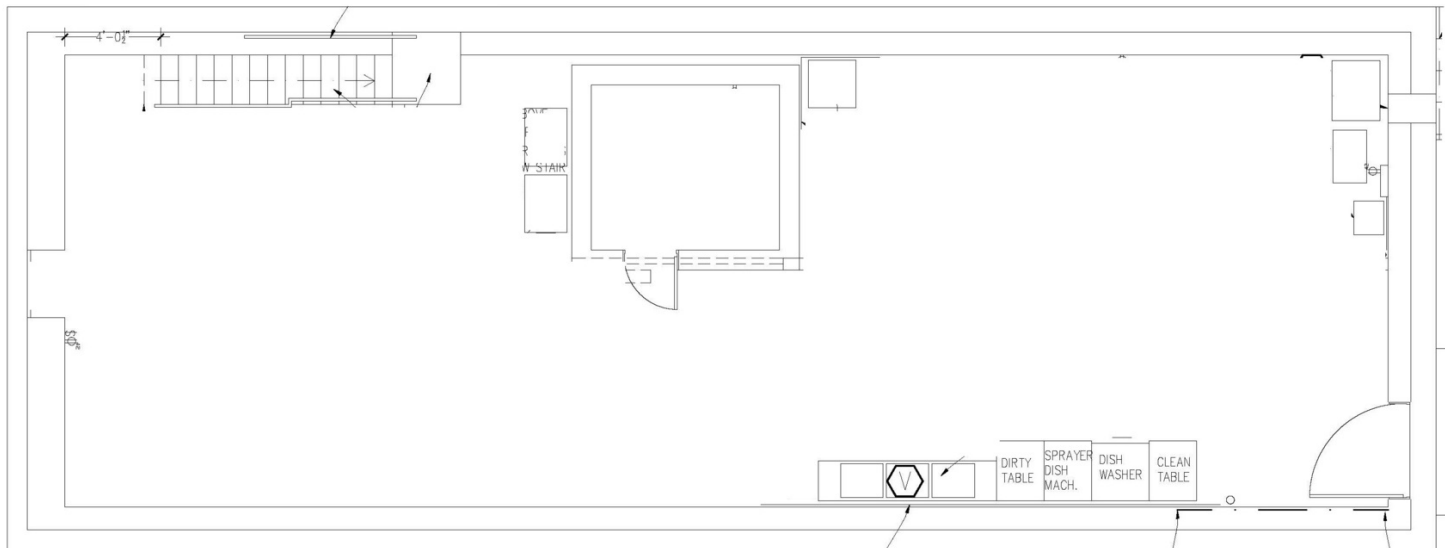
SWISHERCOMMERCIAL.COM

Turnkey Restaurant for Lease

110 W MIDDLE ST, CHELSEA, MI 48118



Street Level



Basement

**Building
relationships.**

208 East Washington Street Ann Arbor, MI 48104

734.663.0501

Jeff Evans

734.926.0222

JEFFEVANS@SWISHERCOMMERCIAL.COM

SWISHERCOMMERCIAL.COM

Turnkey Restaurant for Lease

110 W MIDDLE ST, CHELSEA, MI 48118



Building relationships.

208 East Washington Street Ann Arbor, MI 48104

734.663.0501

Jeff Evans

734.926.0222

JEFFEVANS@SWISHERCOMMERCIAL.COM

SWISHERCOMMERCIAL.COM