

# 7689 SW Capitol Hwy

7689 SW Capitol Hwy, Portland, OR 97219

View  
Online:

This beautiful mid century style building is centrally located in the thriving pocket of Southwest Portland called Multnomah Village. This charming community is centered around local shops, cafes, boutiques and restaurants all within a pedestrian friendly few blocks. The community undergoing recent growth with new mixed use development, one of which is across the street from this property. The building itself has great natural light and is currently built out for a medical use with several exam rooms each with sinks, three offices, a large room in the back with another sink, reception, waiting and restroom. The building has separate off street parking lot in the back, a couple of spaces on the side of the building and is very visible on Capitol Hwy.

**Available:****2,241 SF****\$25.00 SF/Year, NNN****Features:**

- Parking Lot
- Reception and waiting area
- 3 Exam rooms with sinks
- 3 Office's
- Restroom
- Large conference type room with a sink
- Central workspace
- Storage room
- Wall of storage cabinets
- Heating and air conditioning

**Demographics**

2016 Estimate	1 Mile	3 Mile	5 Mile
<b>Population:</b>	16,550	108,134	353,502
<b>Average HH Income:</b>	\$96,523	\$119,275	\$97,535

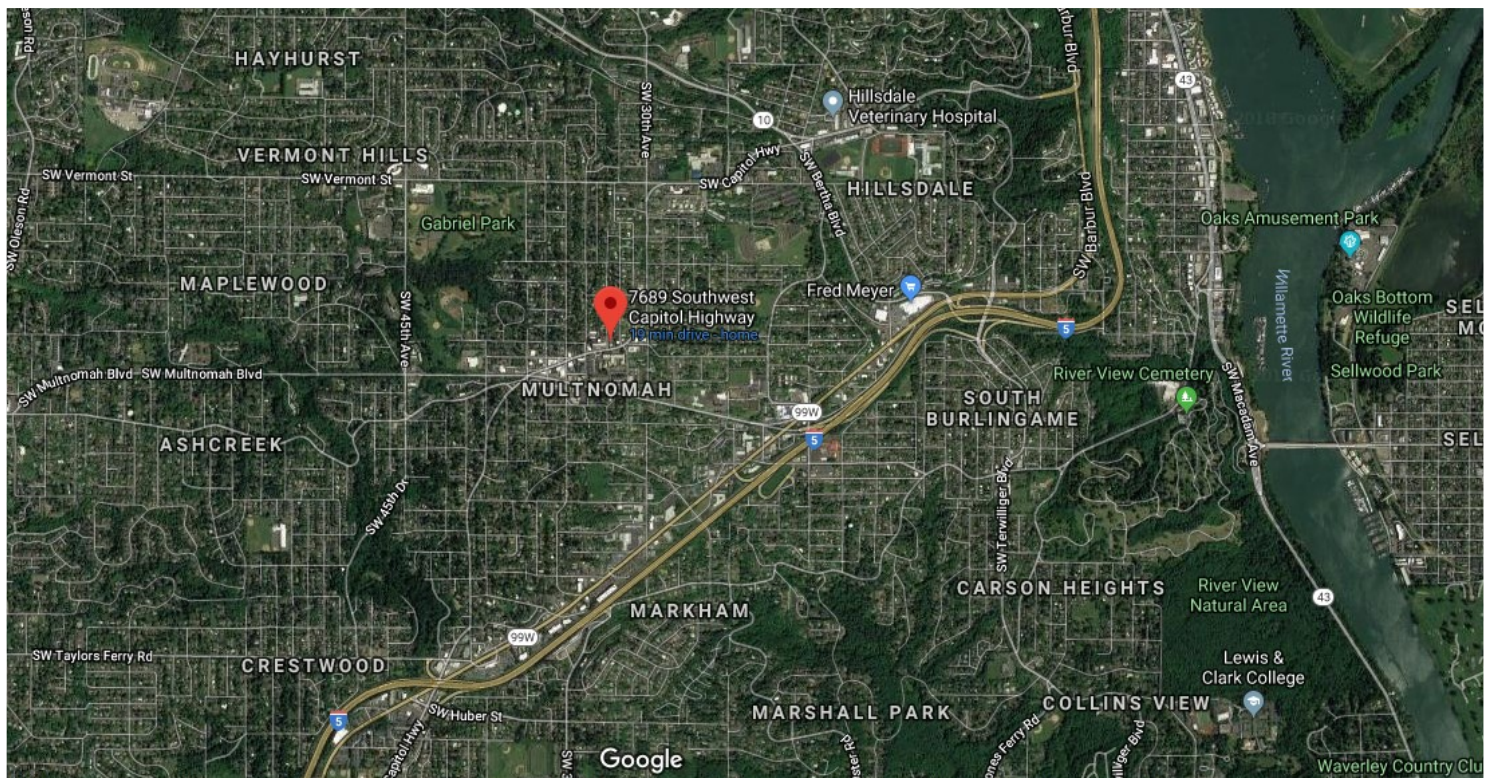
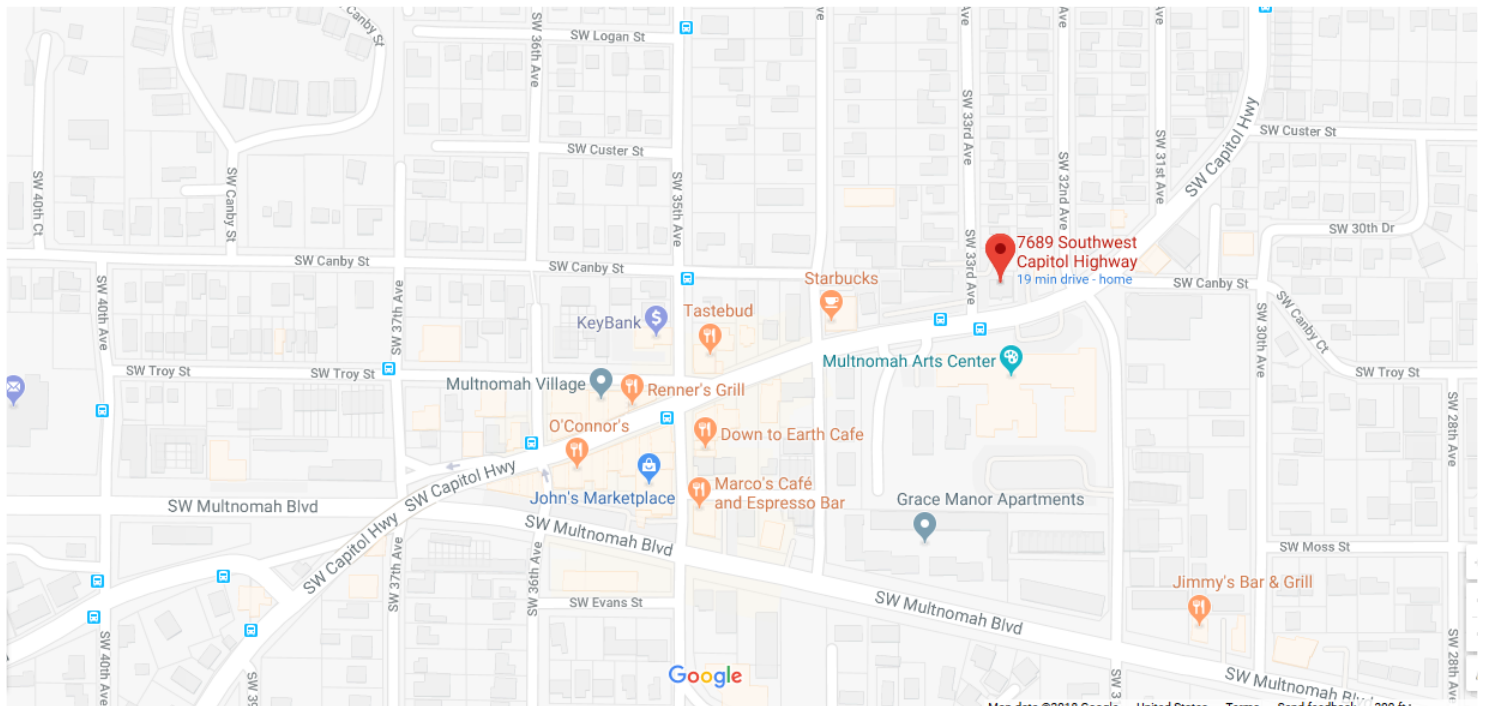
Scott Groves | 503.616.2944 | [scott@barnardcommercial.com](mailto:scott@barnardcommercial.com)Ashley Rhea | 503.616.2942 | [ashley@barnardcommercial.com](mailto:ashley@barnardcommercial.com)**[www.barnardcommercial.com](http://www.barnardcommercial.com) | 503.675.0900 | Mail: 6650 SW Redwood Lane Suite 330, Portland OR 97224**

All information contained herein was obtained from sources deemed reliable. No guarantee is made with respect to accuracy. Specifications subject to change without notice.

Results Driven Retail Solutions<sup>SM</sup>

**Barnard Commercial**  
Real Estate

# 7689 SW Capitol Hwy



Scott Groves | 503.616.2944 | [scott@barnardcommercial.com](mailto:scott@barnardcommercial.com)

Ashley Rhea | 503.616.2942 | [ashley@barnardcommercial.com](mailto:ashley@barnardcommercial.com)

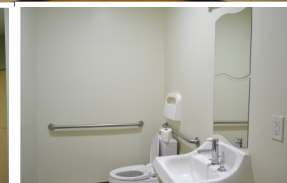
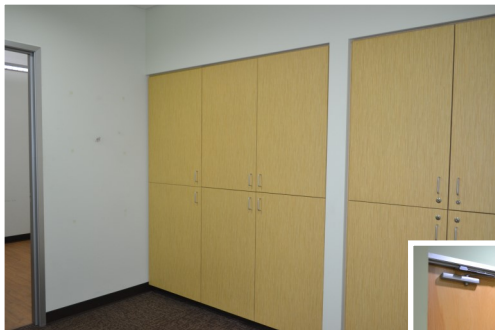
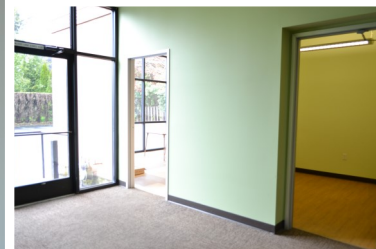
[www.barnardcommercial.com](http://www.barnardcommercial.com) | 503.675.0900 | Mail: 6650 SW Redwood Lane Suite 330, Portland OR 97224

All information contained herein was obtained from sources deemed reliable. No guarantee is made with respect to accuracy. Specifications subject to change without notice.

Results Driven Retail Solutions<sup>SM</sup>

Barnard Commercial  
Real Estate

# 7689 SW Capitol Hwy



Scott Groves | 503.616.2944 | [scott@barnardcommercial.com](mailto:scott@barnardcommercial.com)

Ashley Rhea | 503.616.2942 | [ashley@barnardcommercial.com](mailto:ashley@barnardcommercial.com)

[www.barnardcommercial.com](http://www.barnardcommercial.com) | 503.675.0900 | Mail: 6650 SW Redwood Lane Suite 330, Portland OR 97224

All information contained herein was obtained from sources deemed reliable. No guarantee is made with respect to accuracy. Specifications subject to change without notice.