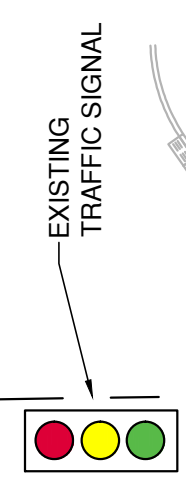
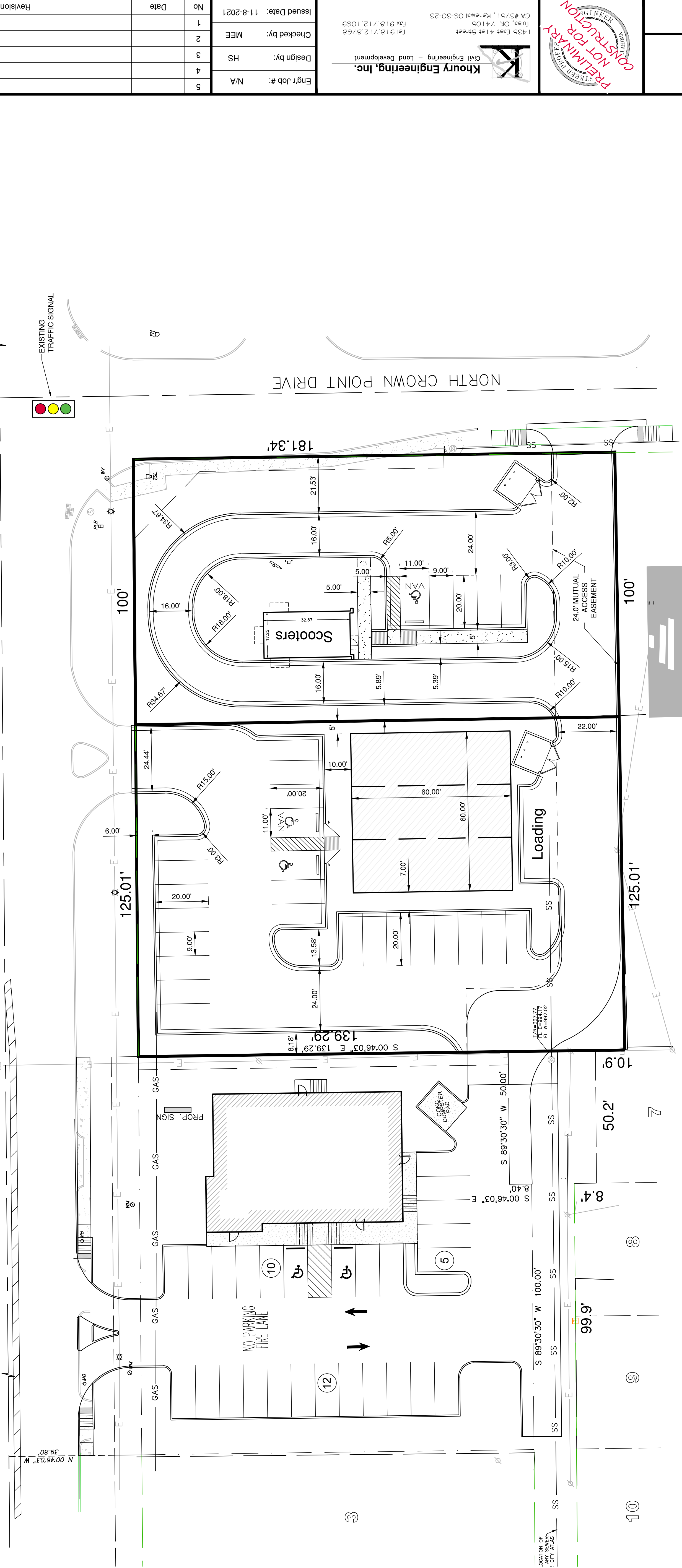


BEFORE YOU DIG ...
 CALL 800-522-6543
 CALL OKIE

ARLINGTON BLVD.



NORTH CROWN POINT DRIVE

181.34'

125.01'

125.01'

10.9'

50.2'

8.4'

99.9'

10

9

8

7

139.29'

24.44'

100'

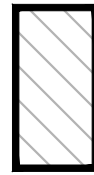

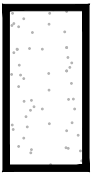
100'

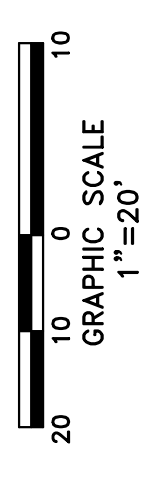
100'

100'

100'

LEGEND
 RE: THIS SHEET

-  AREA OF BUILDING
-  AREA OF ASPHALT/ CONCRETE PAVEMENT
-  AREA OF CONCRETE SIDEWALK



1 SITE PLAN
 SCALE: 1"=20'

ADA RETAIL CENTER
 ARLINGTON BLVD. AND NORTH CROWN POINT DRIVE
 CITY OF ADA - PONTIAC COUNTY - OKLAHOMA

SITE PLAN - OPTION 16



Khoury Engineering, Inc.
 Civil Engineering - Land Development
 1435 East 41st Street
 Tulsa, OK 74105
 Tel: 918.712.8769
 Fax: 918.712.1069

Eng't Job #:	N/A
Design by:	HS
Checked by:	MEE
Issued Date:	11-8-2021

No	Date	Revisions
1		
2		
3		
4		
5		

By	Revisions

SHEET No. C1.1