

OREGON SOCIETY OF CPA'S BUILDING

10180 SW Laurel Street, Beaverton, Oregon



New Availability

FOR LEASE



PROPERTY DESCRIPTION

AVAILABLE SPACE

Approximately 758 RSF, Ground Level Office - Divisible

Covered exterior entry to suite

PARKING

Two (2) reserved on-site spaces with additional free open surface parking

LEASE TERM

3-5 years

LEASE RATE

\$14.50/SF Full Service



John Van Zonneveld

503.972.7290

johnv@macadamforbes.com

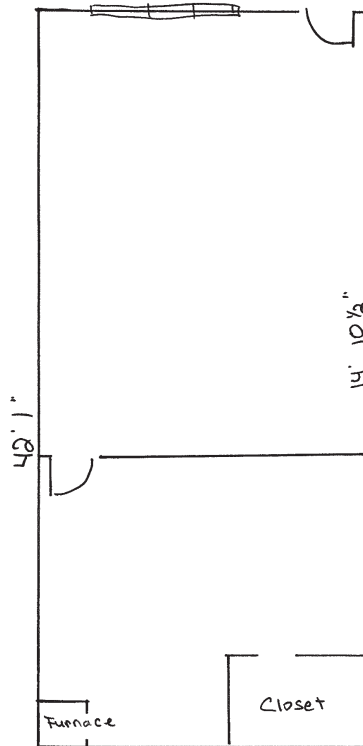
1800 SW First Avenue, Suite 650 | Portland OR 97201 | WWW.MACADAMFORBES.COM | 503.227.2500

10180 SW Laurel Street

FOR LEASE

Beaverton, Oregon

Available Space

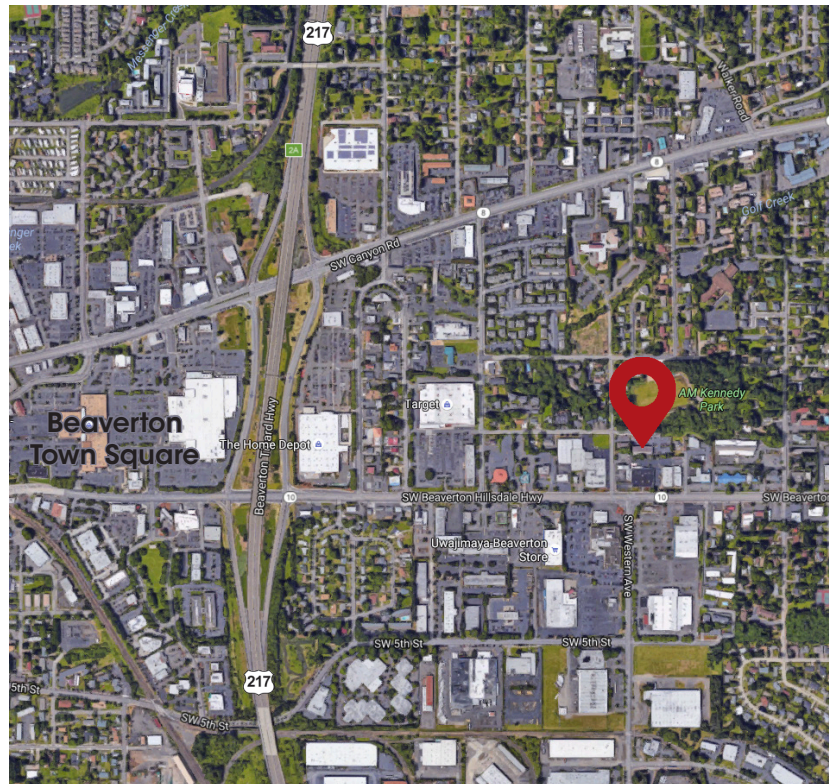


Drawing not to scale 18' 7"



FEATURES

- Owner occupied property
- Very well maintained
- Conveniently located off of Beaverton-Hillsdale Highway with easy access to Highway 217
- Common area conference room available upon request
- Close proximity to retail amenities



John Van Zonneveld
503.972.7290
johnv@macadamforbes.com