

FOR LEASE

994


FOREST ST.
RENO, NV 89509



LOGIC



Click to View

VIRTUAL TOUR 

MICHAEL KEATING

Partner
775.386.9727
mkeating@logicCRE.com
S.174942

MICHAEL DORN

Associate
775.453.4436
mdorn@logicCRE.com
S.189635



Property Highlights

- Located in the rapidly growing MidTown district
- Five (5) on-site parking spaces and street parking
- Lower-level suite with daylight and separate entrance
- Open break room space
- Private bathroom
- Open private office and bullpen area
- All new HVAC throughout
- Private courtyard
- Extensive exterior renovations recently completed
- LED lighting and new flooring throughout

Listing Snapshot



\$1.50 FS
Lease Rate



+/- 1,100 SF
Available SF



011-325-05
Parcel Number (APN)

Demographics

Population	1-mile	3-mile	5-mile
2022 Population	21,524	127,870	239,408
Income	1-mile	3-mile	5-mile
2022 Average Household Income	\$80,542	\$82,781	\$87,991
Households	1-mile	3-mile	5-mile
2022 Total Households	11,389	55,045	100,146

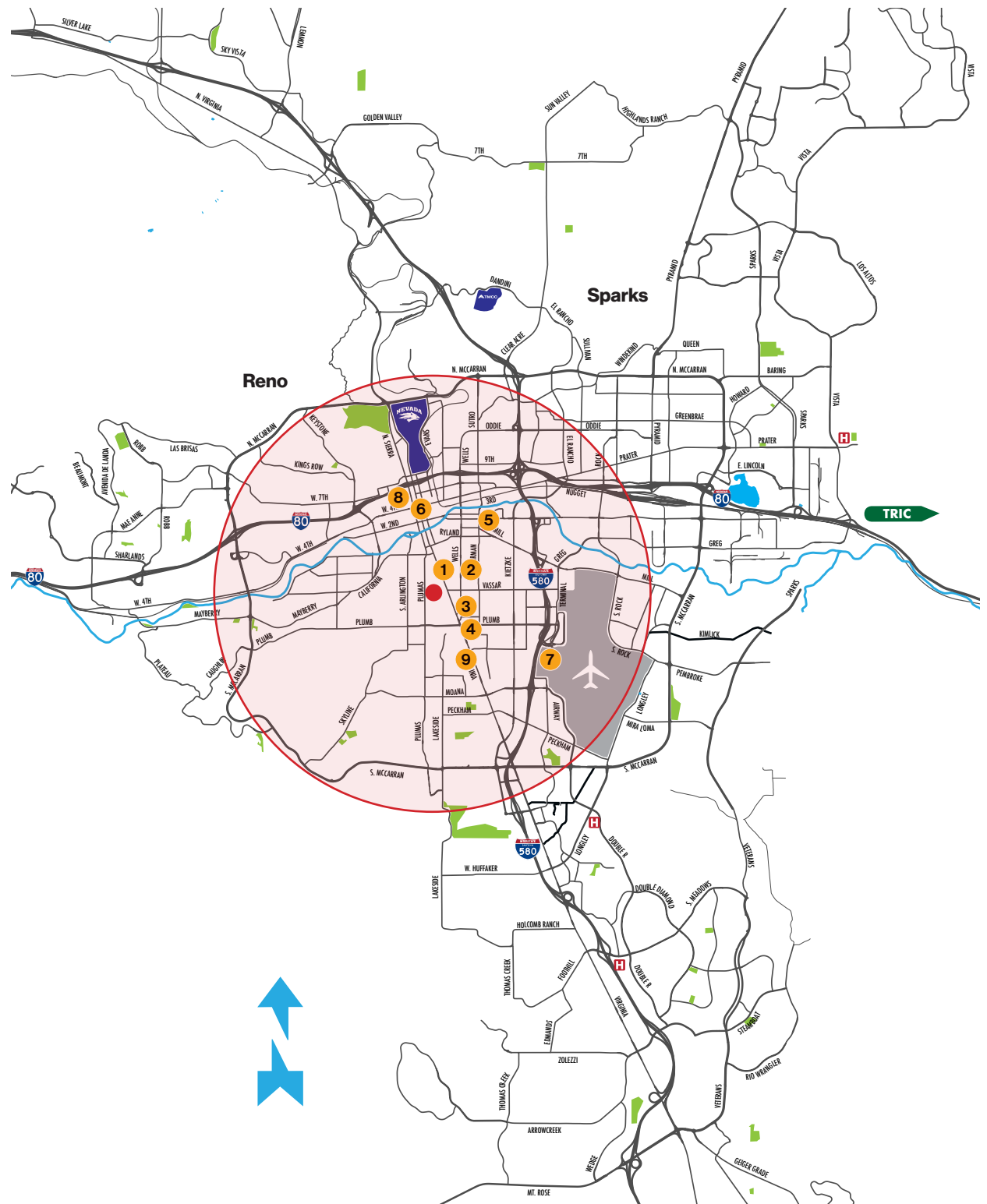
Vicinity Map

The office building is strategically located in a dense and mature residential area servicing +/- 239,408 residents with an average household income of +/- \$87,991 within a 5-mile radius.

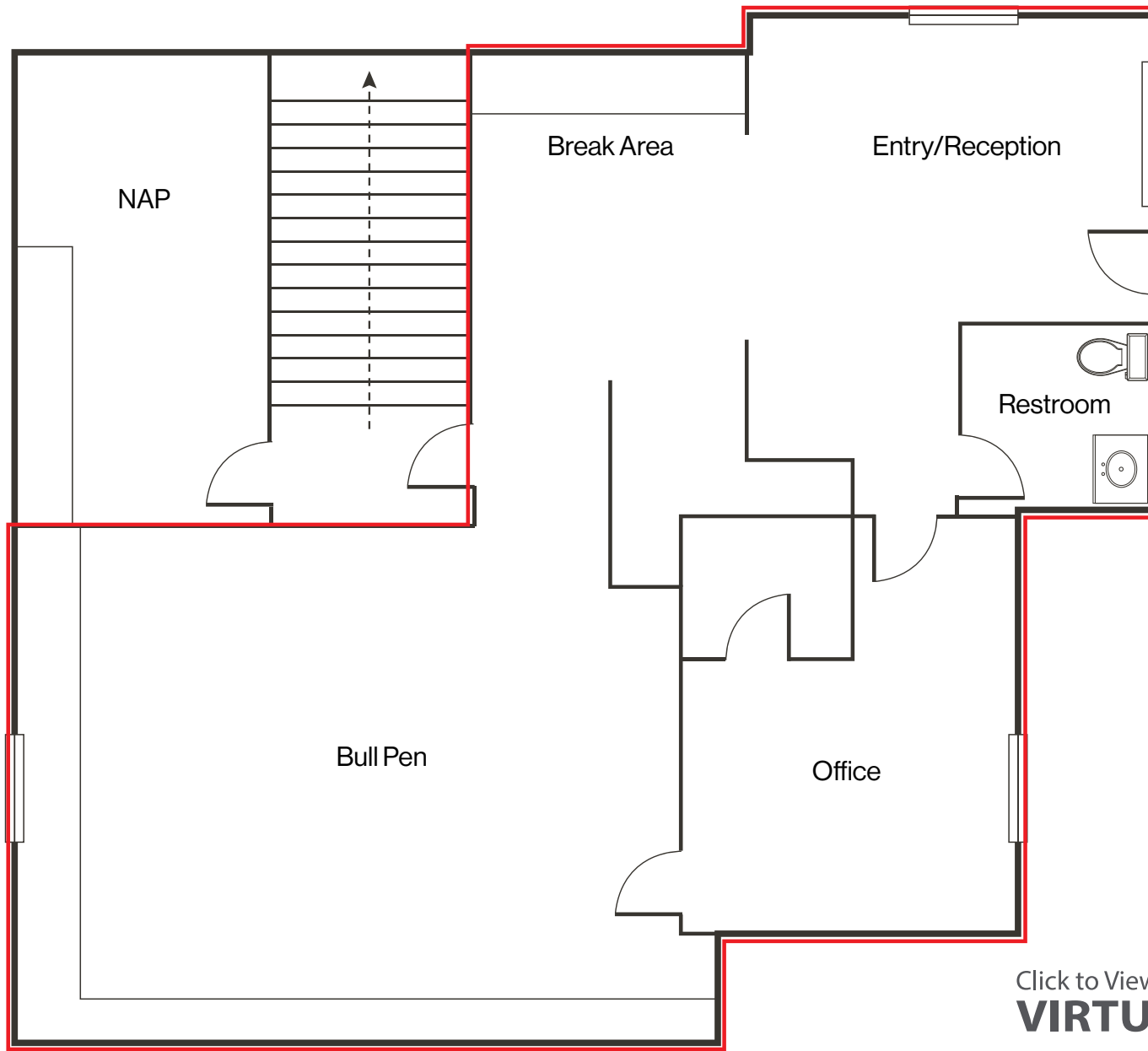
Amenities within 3-miles of Radius

- 1** MidTown - 0.27 miles
- 2** Reno VA Medical Center - 0.58 miles
- 3** Reno Public Market - 0.80 miles
- 4** Reno Experience District - 0.88 miles
- 5** Renown Regional Medical Center - 1.13 miles
- 6** Downtown Reno - 1.14 miles
- 7** Reno-Tahoe International Airport - 1.19 miles
- 8** Saint Mary's Regional Medical Center - 1.28 miles
- 9** Peppermill Resort Spa Casino - 1.24 miles

- Major Landmark
- Major Park
- H Hospital
- Airport
- RTC Bus Route
- RTC Bus Route
- RTC Bus Route



Floor Plan: 1st Floor



Click to View
VIRTUAL TOUR 360°

Property Photos



LOGIC [f](#) [t](#) [in](#)

The information herein was obtained from sources deemed reliable; however LOGIC Commercial Real Estate makes no guarantees, warranties or representation as to the completeness or accuracy thereof.