

9733 LACKMAN ROAD

LENEXA, KANSAS 66219

INDUSTRIAL FOR LEASE | 22,000± SF

est. 1879

KH

KESSINGER HUNTER
commercial real estate

PROPERTY FEATURES

- Excellent distribution space
- Two dock-high (one pit leveler) and one drive-in loading (8' x 12')
- Great access to 435/I-35 interchange
- Ceiling height 25'
- Column spacing 25' x 55'
- Wet sprinkler
- Big Ass fan and ventilation fans

ADDITIONAL INFORMATION

TOTAL SF	22,000± SF
OFFICE SPACE	2,500± SF
LEASE RATE	\$7.25 PSF NNN
CAM	\$0.63 PSF
TAXES	\$1.34 PSF
INSURANCE	\$0.36 PSF
AVAILABLE	July 1, 2025



For more information, please contact:

BRIAN SHERMAN
Industrial Brokerage
913.558.0459
bsherman@kessingerhunter.com

MATTHEW SEVERNS, SIOR, CCIM
Principal, Industrial Brokerage
913.787.7636
mseverns@kessingerhunter.com

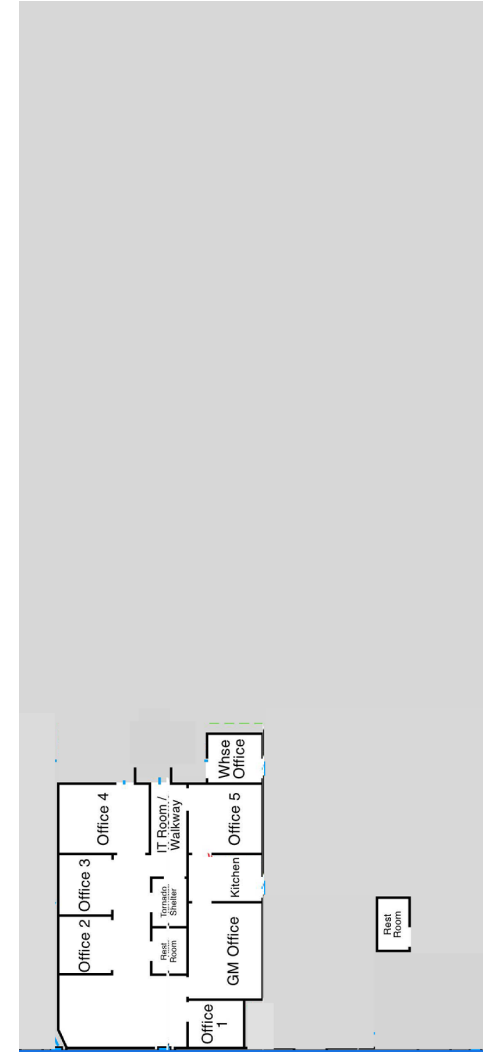
KESSINGER/HUNTER & COMPANY, LC
2600 Grand Boulevard, Suite 700
Kansas City, MO 64108
816.842.2690
www.kessingerhunter.com

9733 LACKMAN ROAD, LENEXA, KANSAS 66219

Industrial for Lease

est. 1879

KH



For more information, please contact:

BRIAN SHERMAN
Industrial Brokerage
913.558.0459
bsherman@kessingerhunter.com

MATTHEW SEVERNS, SIOR, CCIM
Principal, Industrial Brokerage
913.787.7636
mseverns@kessingerhunter.com

KESSINGER/HUNTER & COMPANY, LC
2600 Grand Boulevard, Suite 700
Kansas City, MO 64108
816.842.2690
www.kessingerhunter.com