

FOR LEASE – 4010 W. 15th Street, Suite 80 Plano, Texas

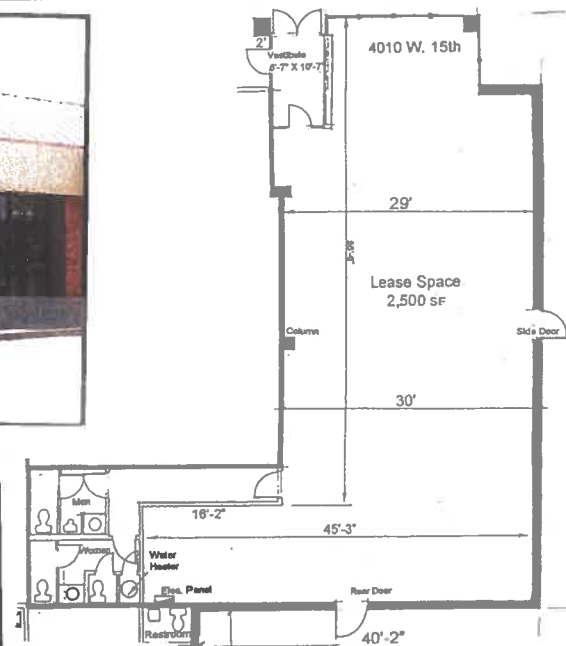
PROPERTY INFORMATION

- Approximately 2,500 SF
- Close proximity to Medical Hospital and Medical offices
- Great visibility
- Pole Sign Panel Available
- Easy Access and Plenty of Parking
- Lease Terms Negotiable
- For Additional Information Contact:

Lisa Preston

214/553-0000 x6

lpreston@wpcr.com



WILLINGHAM PROPERTY COMPANY

(214) 553-0000

Lisa Preston extension 6

