

# FOR LEASE

## 5 DOWNTOWN OFFICE SUITES

MERCED, CALIFORNIA

**Century 21**  
Commercial  
M&M and Associates

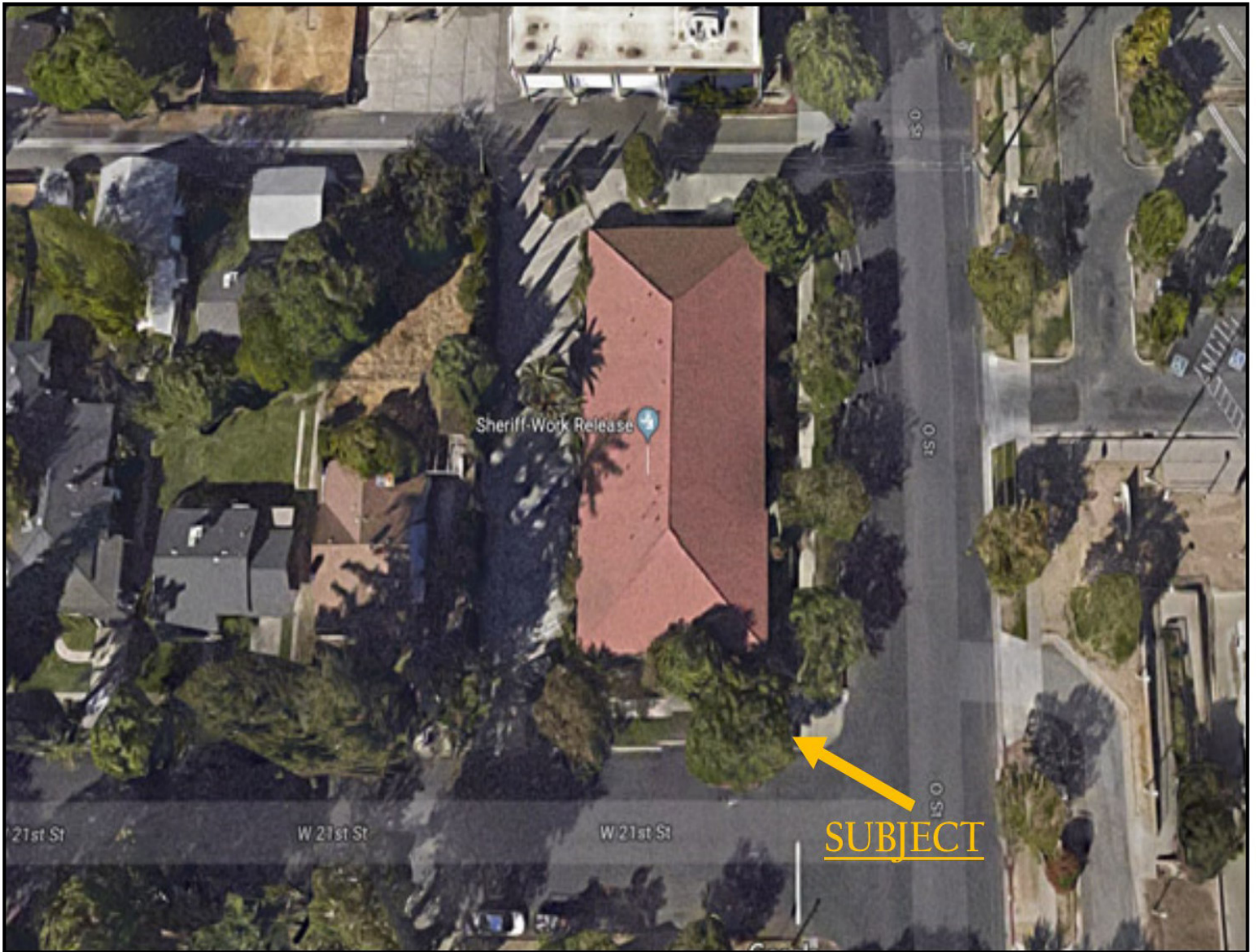


- 2101, 2103, 2105, 2107 AND 2109 O STREET, MERCED, CA
- FIVE OFFICE CONDOS FOR LEASE
- **APPROXIMATELY 801+/- to 1,224 SQUARE FEET**
- GREAT LOCATION FOR LAW OFFICES OR GENERAL USE
- LOCATED DOWNTOWN ACROSS FROM COURT HOUSE
- GREAT LOCATION AND HIGH VISIBILITY BUILDING

AGENT: FREDERICK M POLANCO  
209.261.3955  
fpolanco@c21mm.com  
CALBRE #01110168

AGENT: LORI MACHADO  
209.617.5376  
lmachado@c21mm.com  
CALBRE #01770660

CENTURY 21 COMMERCIAL  
2995 R STREET, SUITE 102  
MERCED, CA 95348



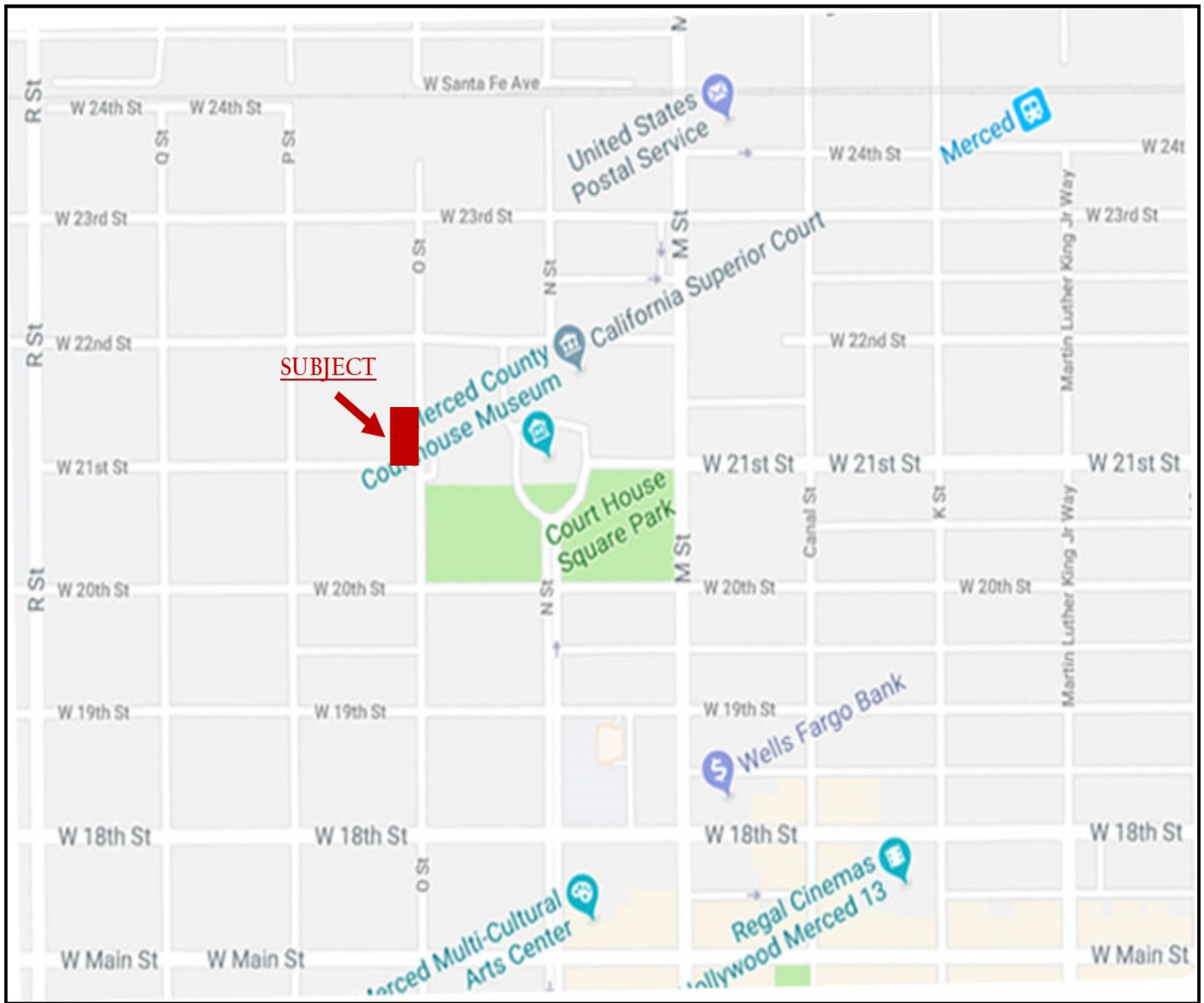
AGENT: FREDERICK M POLANCO  
209.261.3955  
fpolanco@c21mm.com  
CALBRE #01110168

AGENT: LORI MACHADO  
209.617.5376  
lmachado@c21mm.com  
CALBRE #01770660

CENTURY 21 COMMERCIAL  
2995 R STREET, SUITE 102  
MERCED, CA 95348

All information, representation and projections shown herein are based on information supplied by sources deemed to be reliable, however, they are not warranted by Century 21 and are subject to change without notice.

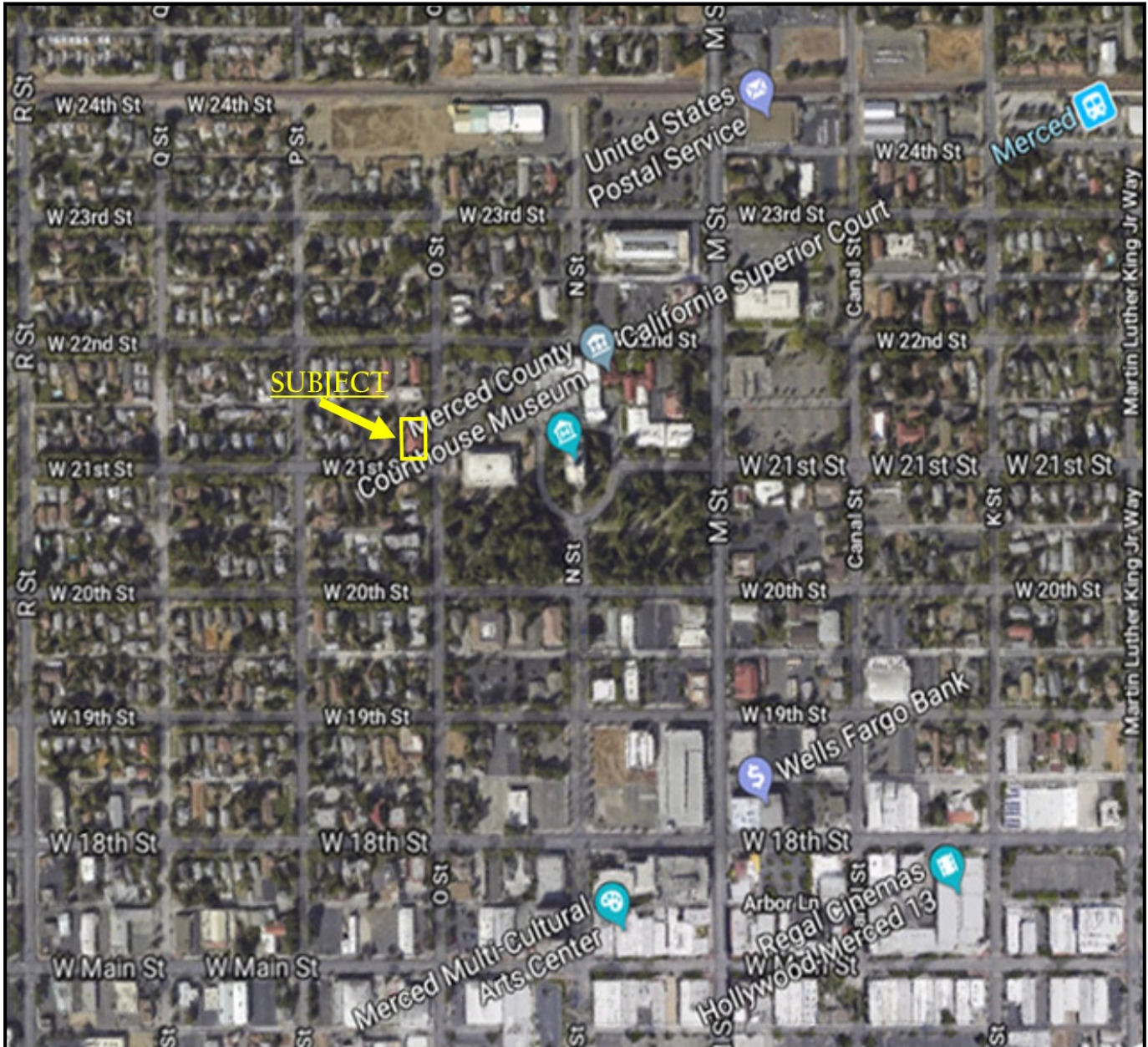
**Century21**  
Commercial<sup>®</sup>  
M&M and Associates



AGENT: FREDERICK M POLANCO  
209.261.3955  
fpolanco@c21mm.com  
CALBRE #01110168

AGENT: LORI MACHADO  
209.617.5376  
lmachado@c21mm.com  
CALBRE #01770660

CENTURY 21 COMMERCIAL  
2995 R STREET, SUITE 102  
MERCED, CA 95348



AGENT: FREDERICK M POLANCO  
209.261.3955  
fpolanco@c21mm.com  
CALBRE #01110168

AGENT: LORI MACHADO  
209.617.5376  
lmachado@c21mm.com  
CALBRE #01770660

CENTURY 21 COMMERCIAL  
2995 R STREET, SUITE 102  
MERCED, CA 95348