

As exclusive leasing agents, we are pleased to offer the following prime space for lease:

# 96 NORTH 5<sup>TH</sup> STREET



Between Berry & Wythe Streets

WILLIAMSBURG RETAIL WITH OUTDOOR SEATING



For more information, please contact:

## Garry Steinberg

Managing Director/Principal

212.776.1285

[gsteinberg@lee-associates.com](mailto:gsteinberg@lee-associates.com)

## Jaime Schultz

Director

212.776.1253

[jschultz@lee-associates.com](mailto:jschultz@lee-associates.com)

## Jeffrey Lopez

Associate

212.776.4351

[jlopez@lee-associates.com](mailto:jlopez@lee-associates.com)

[leeassociatesnyc.com](http://leeassociatesnyc.com)

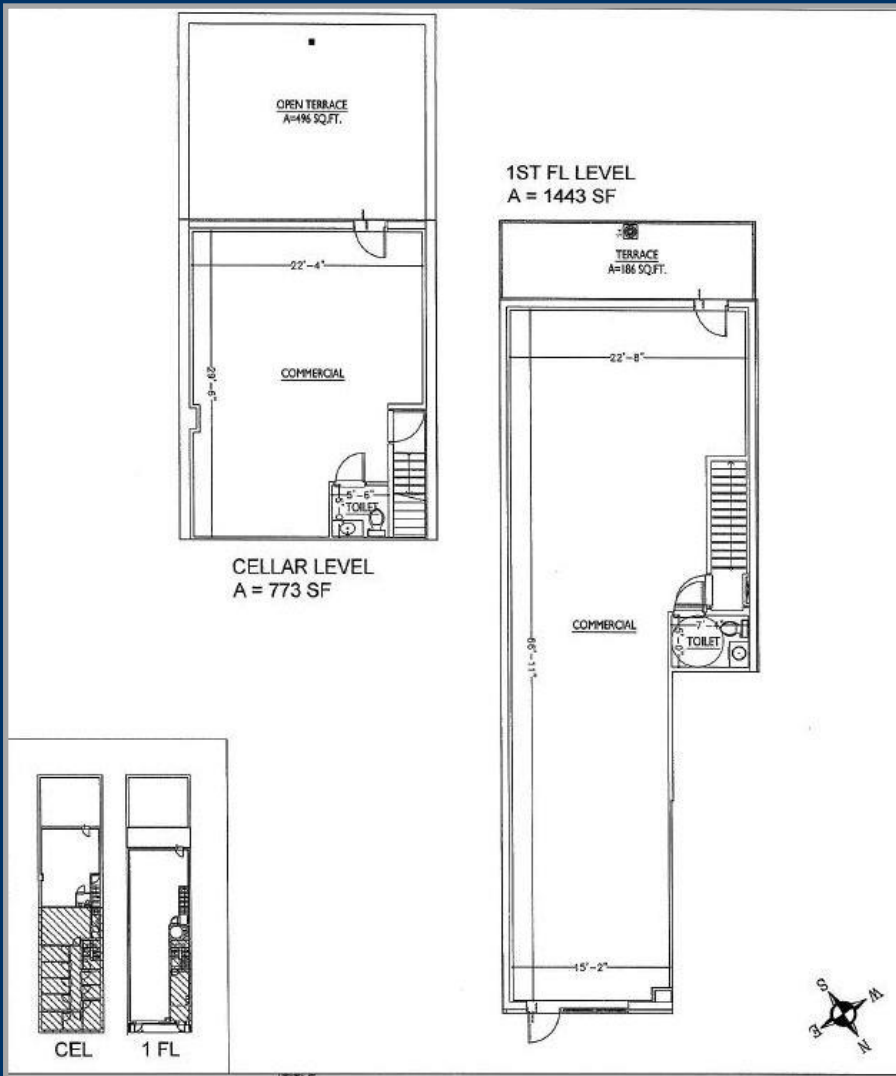
As exclusive leasing agents, we are pleased to offer the following prime space for lease:

# 96 NORTH 5<sup>TH</sup> STREET



Between Berry & Wythe Streets

WILLIAMSBURG RETAIL WITH OUTDOOR SEATING



## Space

Ground: 1,443 sf  
Basement: 1,000 sf  
Backyard: 496 sf  
Terrace: 186 sf

## Frontage

15 ft

## Ceiling

13 ft

## Possession

Immediate

## Asking Rent

Upon Request

## Comments

Vented  
New HVAC

As exclusive leasing agents, we are pleased to offer the following prime space for lease:

# 96 NORTH 5TH STREET



Between Berry & Wythe Streets

## WILLIAMSBURG RETAIL WITH OUTDOOR SEATING



### Neighbors

- Apple
- Whole Foods
- RRL | Jcrew
- G-Star Raw | Aesop
- Levi's Jeans
- Scotch & Soda
- Madewell | Gant Rugger
- Sandro | Maje
- Urban Outfitter's Space 98
- Rituals | Le Labo
- WeWork | Blue Bottle
- McNally Jackson Books
- Urban | Parm
- Umami Burger
- Sweet Green

For more information, please contact:

**Garry Steinberg**

Managing Director/Principal  
212.776.1285

[gsteinberg@lee-associates.com](mailto:gsteinberg@lee-associates.com)

**Jaime Schultz**

Director  
212.776.1253

[jschultz@lee-associates.com](mailto:jschultz@lee-associates.com)

**Jeffrey Lopez**

Associate  
212.776.4351

[jlopez@lee-associates.com](mailto:jlopez@lee-associates.com)