

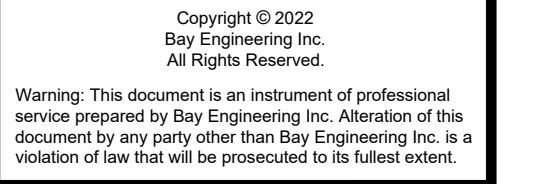
VICINITY MAP
SCALE: 1"=2000'
COPYRIGHT ADC THE MAP PEOPLE
PERMITTED USE NO. 08301200

LEGEND

- PROPOSED BUILDINGS
- PROPOSED SIDEWALK
- PROPOSED PAVEMENT
- PROPOSED STORMWATER MGMT.
- PROPOSED LANDSCAPE/GREEN SPACE

Rev.#	By	Date	Description

Copyright © 2022
Bay Engineering Inc.
All Rights Reserved.
Warning: This document is an instrument of professional service prepared by Bay Engineering Inc. Absorption of this document by any party other than Bay Engineering Inc. is a violation of law that will be prosecuted to its fullest extent.



Bay Engineering Inc.
Engineers, Planners and Surveyors
2961 Riva Road, Building 800
Annapolis, Maryland 21401
410.897.9990 fax
email: info@bayengineering.com
www.bayengineering.com

Date: FEBRUARY, 2022
Job Number: 15-5368
Scale: AS SHOWN
Drawn By: M. COREY
Approved By: T. MARTIN
Folder Reference: BAY BRIDGE GROUP MEADE CENTER

ODENTON TOWN CENTER COMMITTEE EXHIBIT
FINAL PLAN AND GRADING PERMIT PLANS
FOR
PHASE 2 OFFICE AND RETAIL BUILDING
MEADE CENTER
TAX MAP 21, GRID 15, PARCEL 279
ODENTON, MARYLAND, 21113
SDP #C-07-0057-01, #G0201
FOURTH ELECTION DISTRICT - ANNE ARUNDEL COUNTY - ZONED: O-NOD