

# 330 LANCASTER AVENUE

Malvern, PA 19355 | Commercial/Retail/Medical Office for Lease or Sale



## Property Specifications

Availability:	Immediate
<b>Total SF:</b>	+/- 24,000 SF
1st Floor:	+/- 7,000 SF
2nd Floor:	+/- 17,000 SF
Zoning:	FC - Frontage Commercial East Whiteland Township
Acres:	+/- 2.5 AC
Parking:	139 spaces

Tremendous visibility on Lancaster Ave

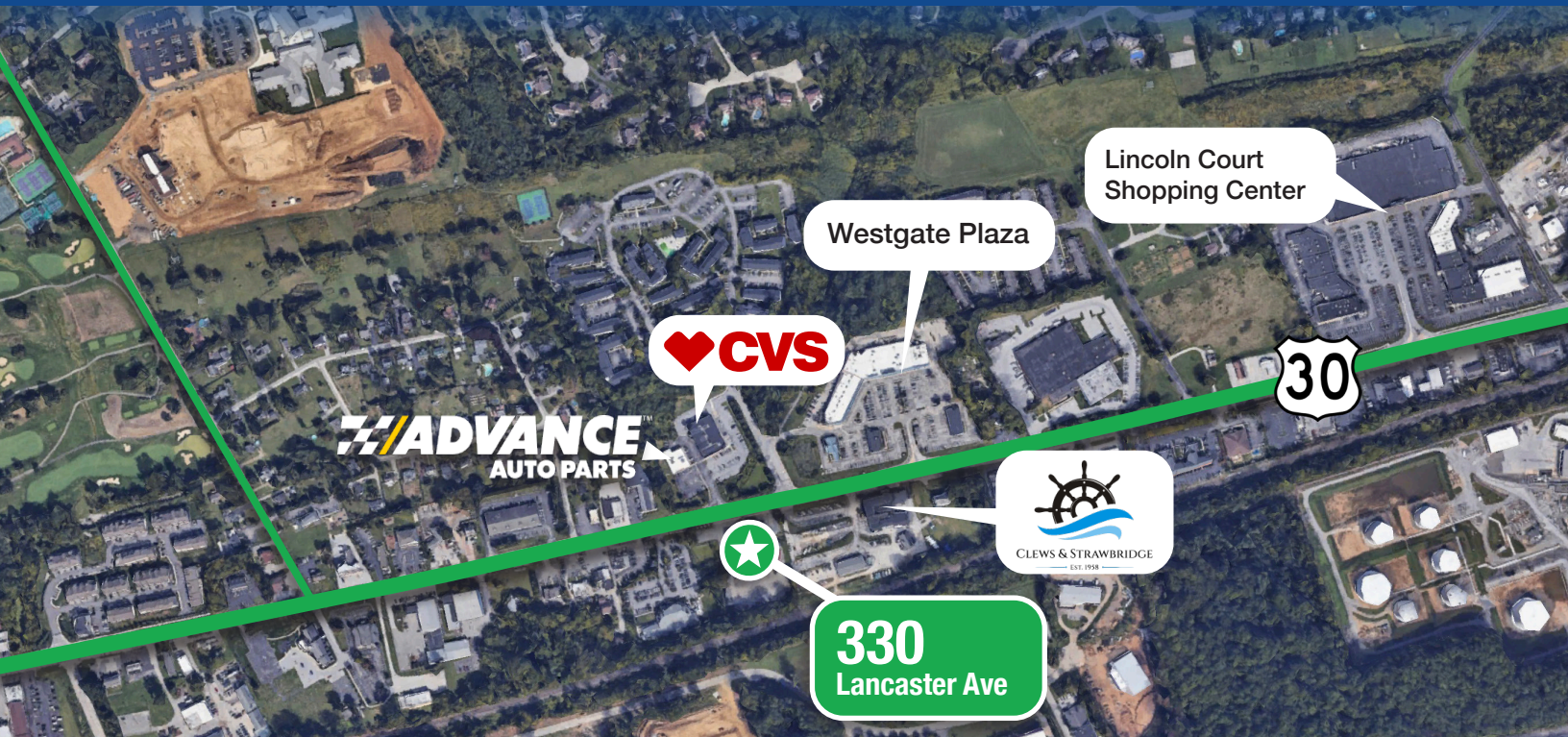
**TOM BAILEY**  
Senior Associate  
610.213.7334  
tom@vrpnw.com



70 E Swedesford Rd  
Malvern, PA 19355  
610.359.5810  
www.vrpnw.com

# 330 LANCASTER AVENUE

Malvern, PA 19355 | Commercial/Retail/Medical Office for Lease or Sale



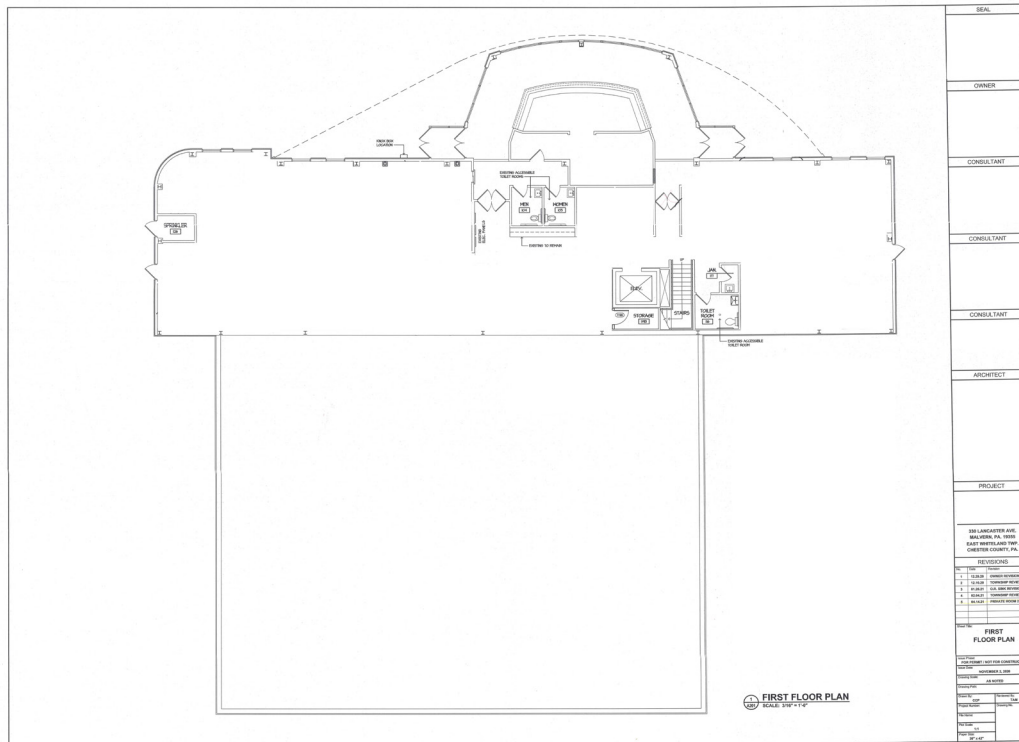
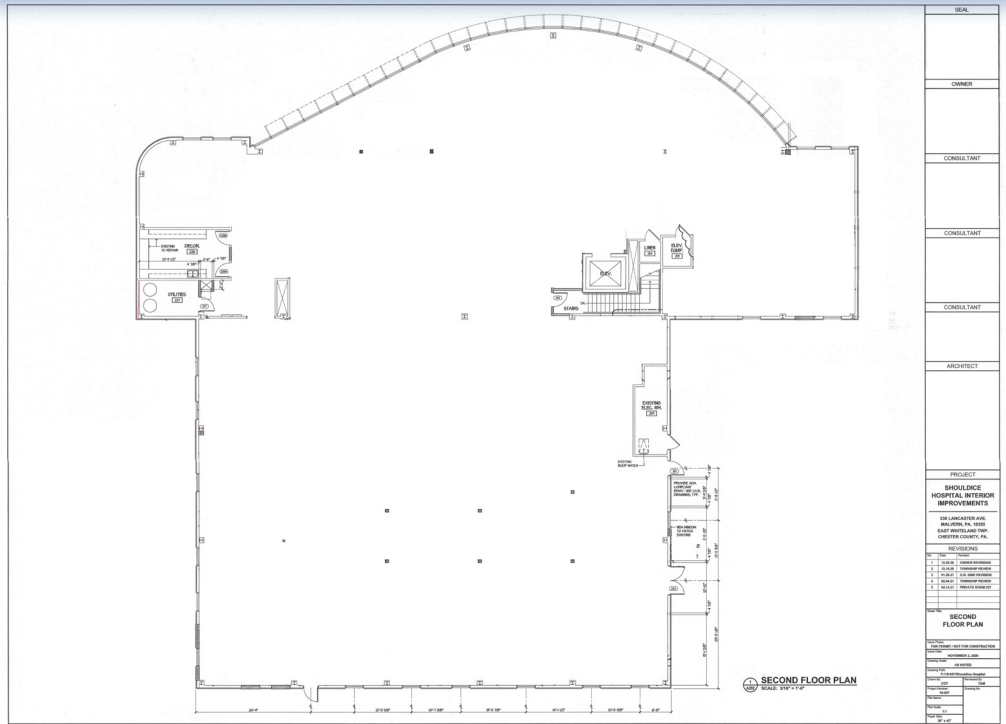
**TOM BAILEY**  
Senior Associate  
610.213.7334  
tom@vrpnw.com



70 E Swedesford Rd  
Malvern, PA 19355  
610.359.5810  
www.vrpnw.com

# 330 LANCASTER AVENUE

Malvern, PA 19355 | Commercial/Retail/Medical Office for Lease or Sale



**TOM BAILEY**  
Senior Associate  
610.213.7334  
tom@vrpnw.com



70 E Swedesford Rd  
Malvern, PA 19355  
610.359.5810  
www.vrpnw.com

The information in this flyer has been obtained from sources deemed reliable, but has not been verified for accuracy or completeness. You should conduct a careful, independent investigation of the property and verify all information. Any reliance on this information is solely at your own risk.

# 330 LANCASTER AVENUE

Malvern, PA 19355 | Commercial/Retail/Medical Office for Lease or Sale



**TOM BAILEY**  
Senior Associate  
610.213.7334  
tom@vrpnw.com



70 E Swedesford Rd  
Malvern, PA 19355  
610.359.5810  
www.vrpnw.com

The information in this flyer has been obtained from sources deemed reliable, but has not been verified for accuracy or completeness. You should conduct a careful, independent investigation of the property and verify all information. Any reliance on this information is solely at your own risk.