

1030 ORTEGA WAY, SUITE A  
PLACENTIA, CA 92870

6,923  
SQUARE FEET

**FOR LEASE**



## PROPERTY FEATURES

- ±6,923 Total Sq. Ft.
- ±1,400 Sq. Ft. of Office
- ±19 Ft. Warehouse Clearance
- Oversized Ground Level Loading Door (14'h x 10'w)
- 400 Amps, 277/480V Power (verify)
- Fire Sprinklers
- Five (5) Reserved Parking Spaces with Additional Common Area Parking
- Skylights
- Excellent Access to the Orange (57), Riverside (91) and Costa Mesa (55) Freeways

### HAYDEN SOCCI, CCIM

Senior Vice President

[714.935.2379](tel:714.935.2379)

[hsocci@voitco.com](mailto:hsocci@voitco.com)

Lic #01705038

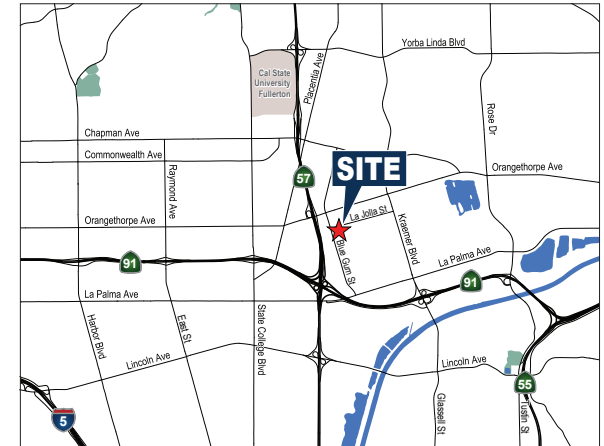
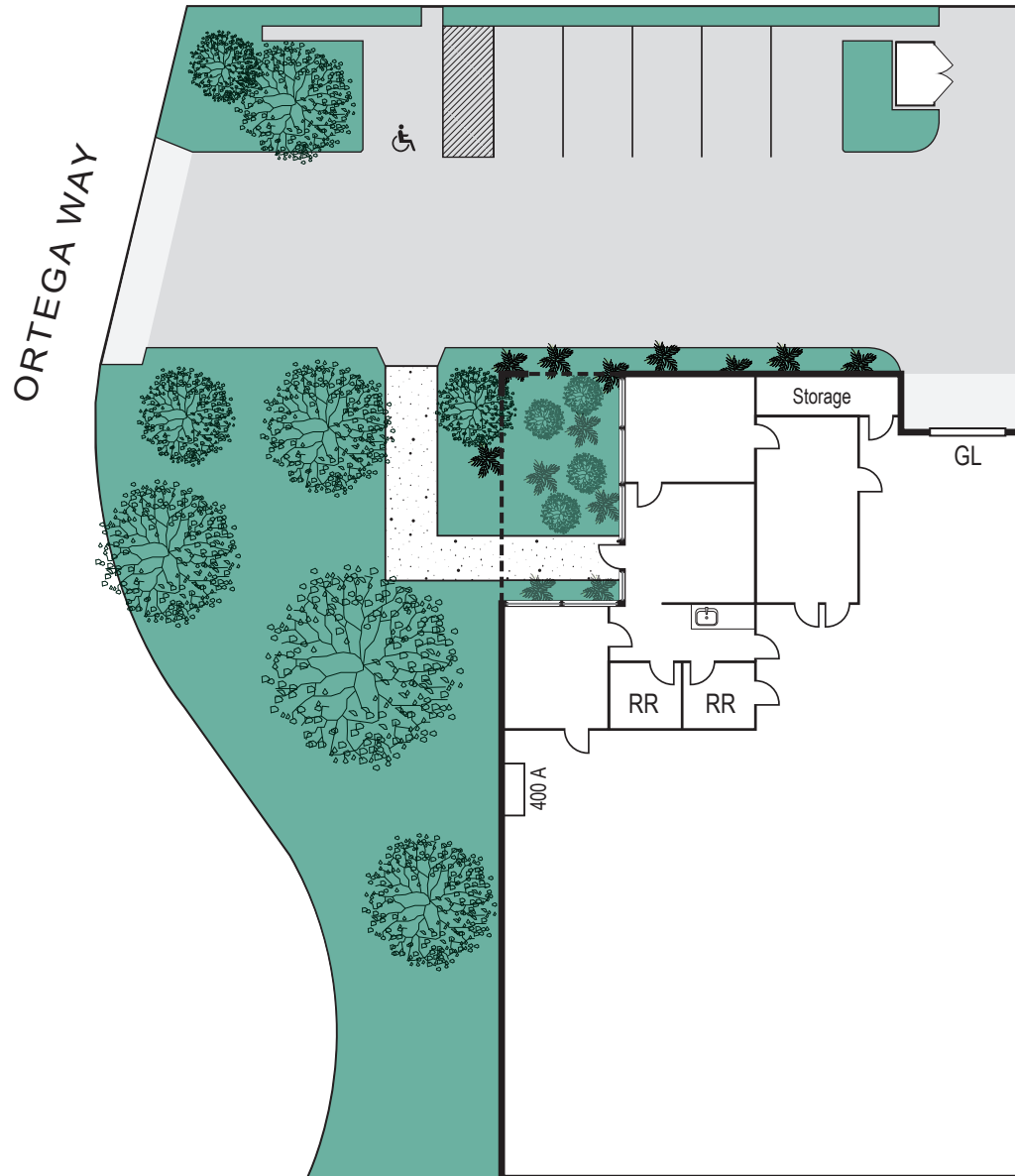
**Voit**

REAL ESTATE SERVICES

# SITE PLAN

1030 ORTEGA WAY, SUITE A  
PLACENTIA, CA 92870

**6,923**  
SQUARE FEET  
**FORLEASE**



**HAYDEN SOCCI, CCIM**

Senior Vice President

714.935.2379

hsocci@voitco.com

Lic #01705038

**Voit**

REAL ESTATE SERVICES