



FOR **LEASE**

**14625 SE 82<sup>ND</sup> DRIVE  
CLACKAMAS, OR 97015**



- Available in 30 days
- 19,659 SF Available
- 15,159 SF Ground Floor
- 4,500 SF Second Floor Offices
- Three dock high
- 20 Foot Ceiling
- High-energy efficient lighting
- Secured off street parking
- Divisible to accommodate various size businesses
- Prime Clackamas business location

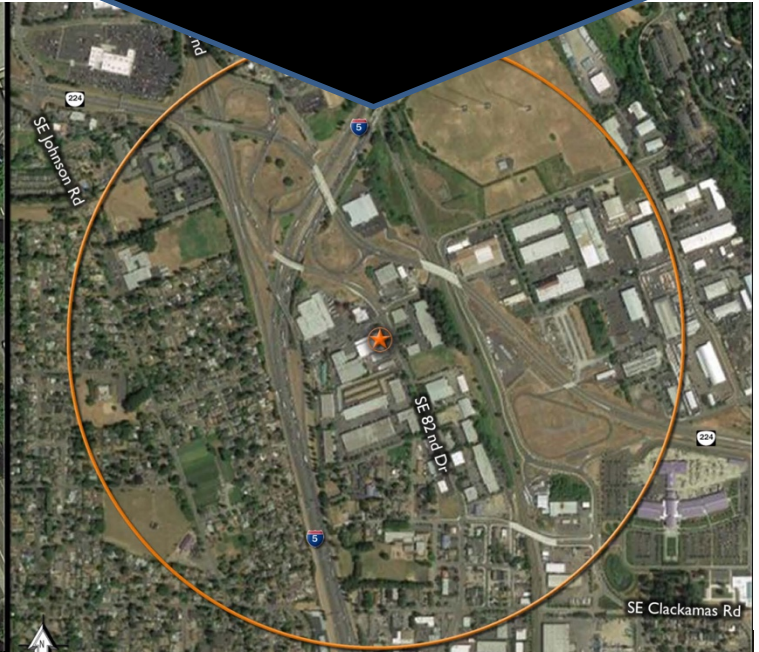
**JENN LIZER**  
Your Real Estate Resource

Jenn Lizer · Real Estate Broker  
503-888-8553 · Jennlizer@me.com  
5265 NE MLK JR Blvd. Portland, OR 97211

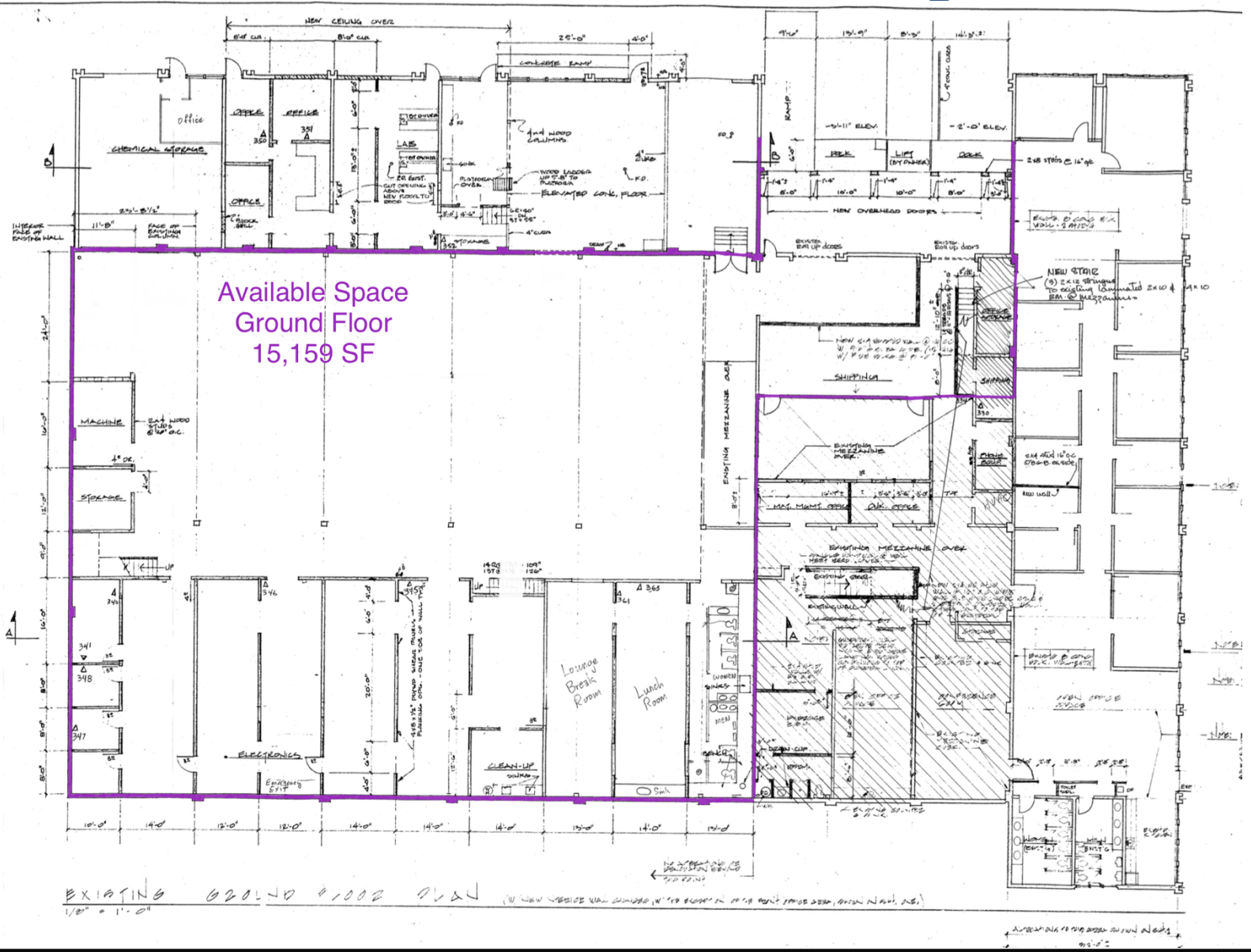
\* The information contained herein is deemed reliable but can not be guaranteed as to its accuracy, and should be independently verified. \*

FOR **LEASE**

**14625 SE 82<sup>ND</sup> DRIVE  
CLACKAMAS, OR 97015**



**FOR LEASE**  
**14625 SE 82<sup>ND</sup> DRIVE**  
**CLACKAMAS, OR 97015**



\* The information contained herein is deemed reliable but can not be guaranteed as to its accuracy, and should be independently verified. \*



**FOR LEASE**  
**14625 SE 82<sup>ND</sup> DRIVE**  
**CLACKAMAS, OR 97015**



**JENN LIZER**  
Your Real Estate Resource

**Jenn Lizer · Real Estate Broker**  
503-888-8553 · Jennlizer@me.com  
5265 NE MLK JR Blvd. Portland, OR 97211

\* The information contained herein is deemed reliable but can not be guaranteed as to its accuracy, and should be independently verified. \*