

FOR LEASE

2210 Three Lakes Pkwy., Tyler, TX 75703

THE MARKET AT THE CROSSING



LEASE RATE

\$18.00 SF/yr

OFFERING SUMMARY

Building Size:	18,070 SF
Available SF:	1,805 SF
Lot Size:	2.32 Acres
Market:	Tyler

PROPERTY OVERVIEW

The Market is a premier venue for shopping in East Texas with a unique offering of retailers. The Anchor Tenant is UT Health East Texas.

Located on the lighted intersection of Old Jacksonville Hwy. and Three Lakes Parkway, the property maintains multiple access points and offers tremendous visibility to one of the major thoroughfares in the market. Old Jacksonville Hwy. is Tyler's newest retail & residential growth corridor.

The Market is just south of Fresh and across from Javie's and the new Texas de Brazil.

Residential neighborhoods include Hollytree, Ashmore, Oak Hills & Oak Hollow surrounding the new Three Lakes Middle School.

Lease Brochure

PRESENTED BY:

HAGAN BAKER

903.405.1954

HAGAN@DRAKETEXAS.COM

CASEY HYMER

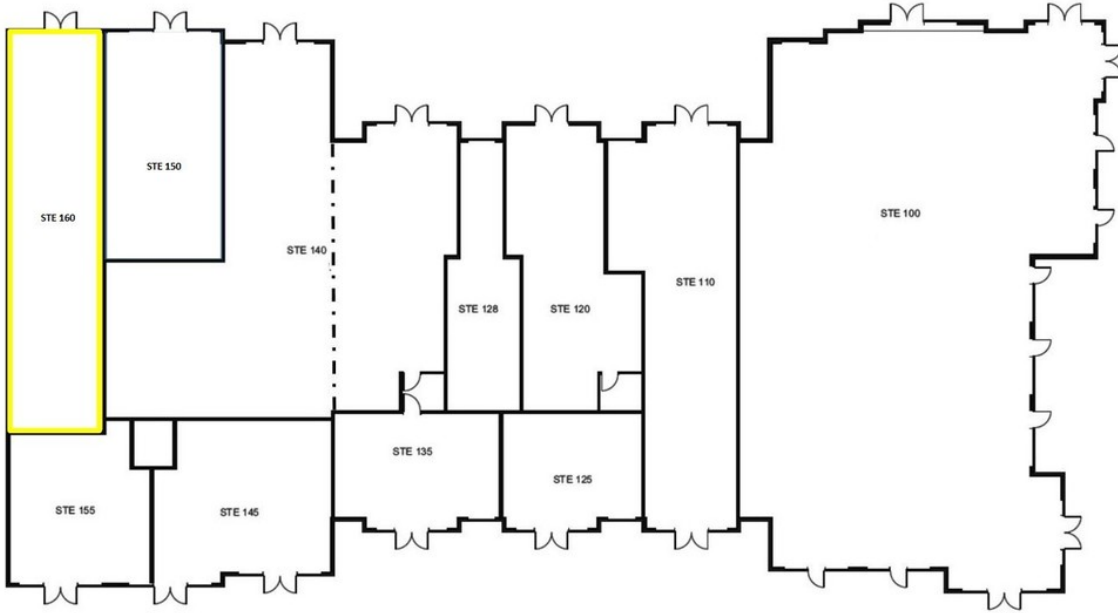
903.200.6743

CASEY@DRAKETEXAS.COM

FOR LEASE

2210 Three Lakes Pkwy., Tyler, TX 75703

THE MARKET AT THE CROSSING



LEASE TYPE NNN | TOTAL SPACE 1,805 SF | LEASE TERM NEGOTIABLE | LEASE RATE \$18.00 SF/YR

SUITE	TENANT	SIZE (SF)	LEASE TYPE	LEASE RATE
Suite 160	Available	1,805 SF	NNN	\$18.00 SF/yr

Lease Brochure

AVAILABLE SPACES

FOR LEASE

2210 Three Lakes Pkwy., Tyler, TX 75703

THE MARKET AT THE CROSSING



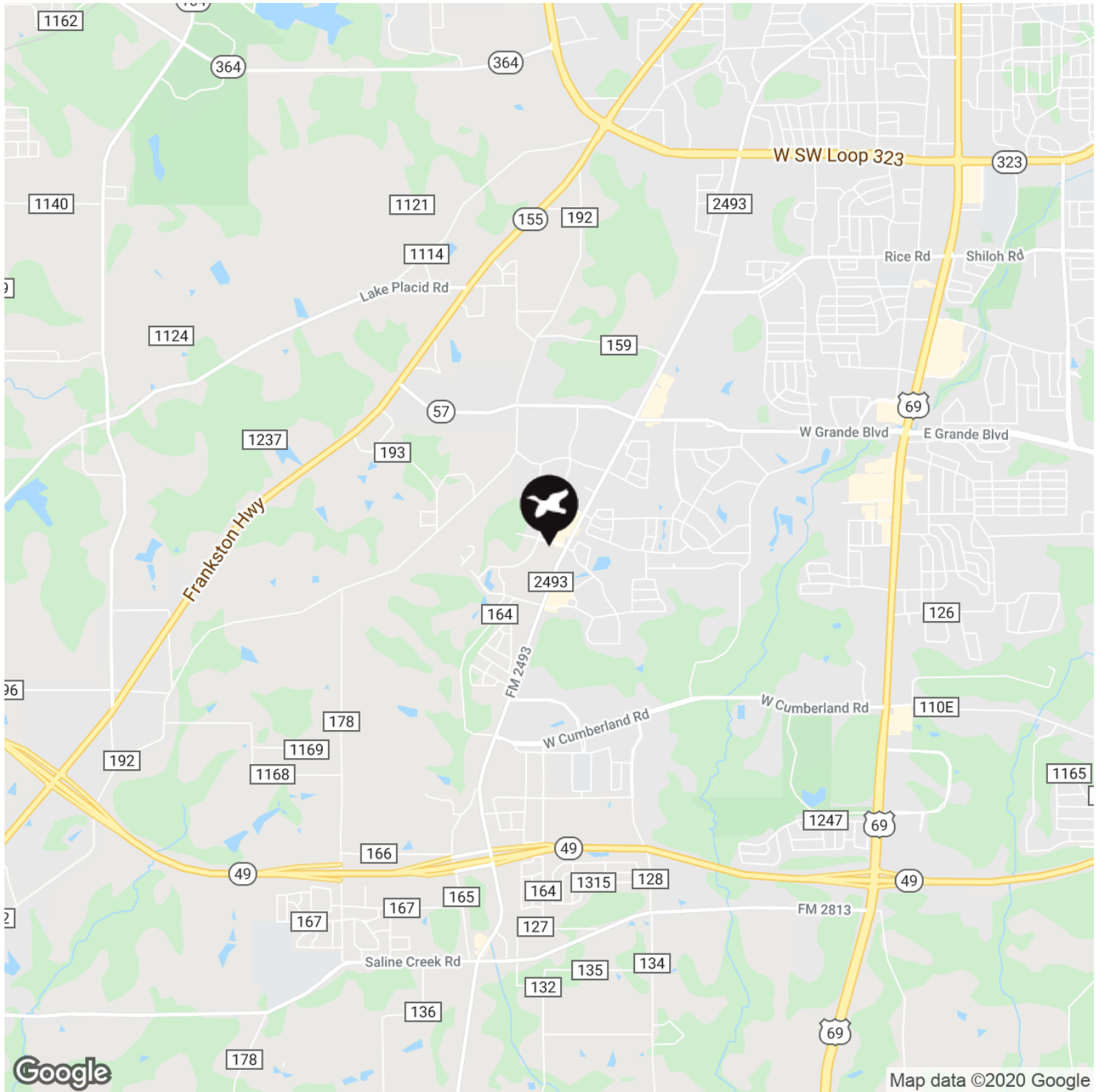
Lease Brochure

ADDITIONAL PHOTOS

FOR LEASE

2210 Three Lakes Pkwy., Tyler, TX 75703

THE MARKET AT THE CROSSING



Lease Brochure

LOCATION MAPS