

FOR SALE

12,624+/- SF Light Industrial Building

1763 Montreal Circle, Tucker, GA 30084

KING Industrial
Realty, Inc.

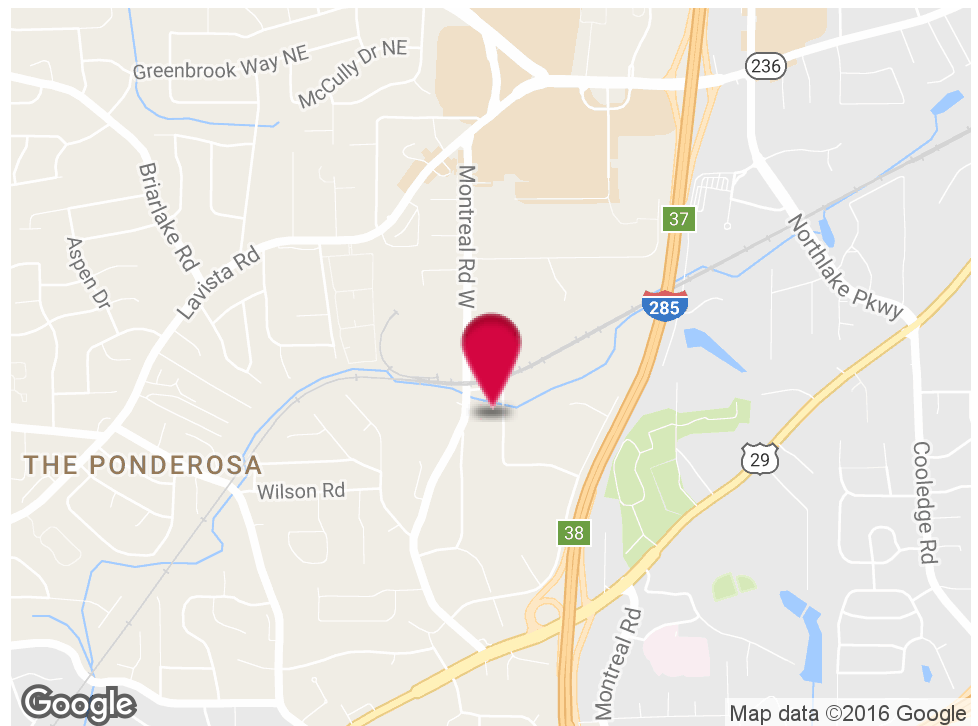


LISTING SUMMARY

Sale Price: \$695,000
Building Size: 12,624 SF
Lot Size: 1.2 Acres
Zoning: M

PROPERTY HIGHLIGHTS

- Heavy Office
- 1 Dock Door
- 100% HVAC
- 13'-16' Ceiling Height
- 22 Parking Spaces
- Convenient to Lawrenceville Hwy
- Former Testing Lab



For More Information Contact:

STEVE RATCHFORD, SIOR, CCIM

Senior Vice President

404.942.2003

sratchford@kingindustrial.com



1920 Monroe Dr., NE, Atlanta, GA 30324 • 404.942.2000 • www.kingindustrial.com

Every effort has been made to provide accurate information, but no liability is assumed for errors and omissions

FOR SALE

12,624+/- SF Light Industrial Building

1763 Montreal Circle, Tucker, GA 30084

KING Industrial
Realty, Inc.



For More Information Contact:

STEVE RATCHFORD, SIOR, CCIM

Senior Vice President

404.942.2003

sratchford@kingindustrial.com



1920 Monroe Dr., NE, Atlanta, GA 30324 • 404.942.2000 • www.kingindustrial.com

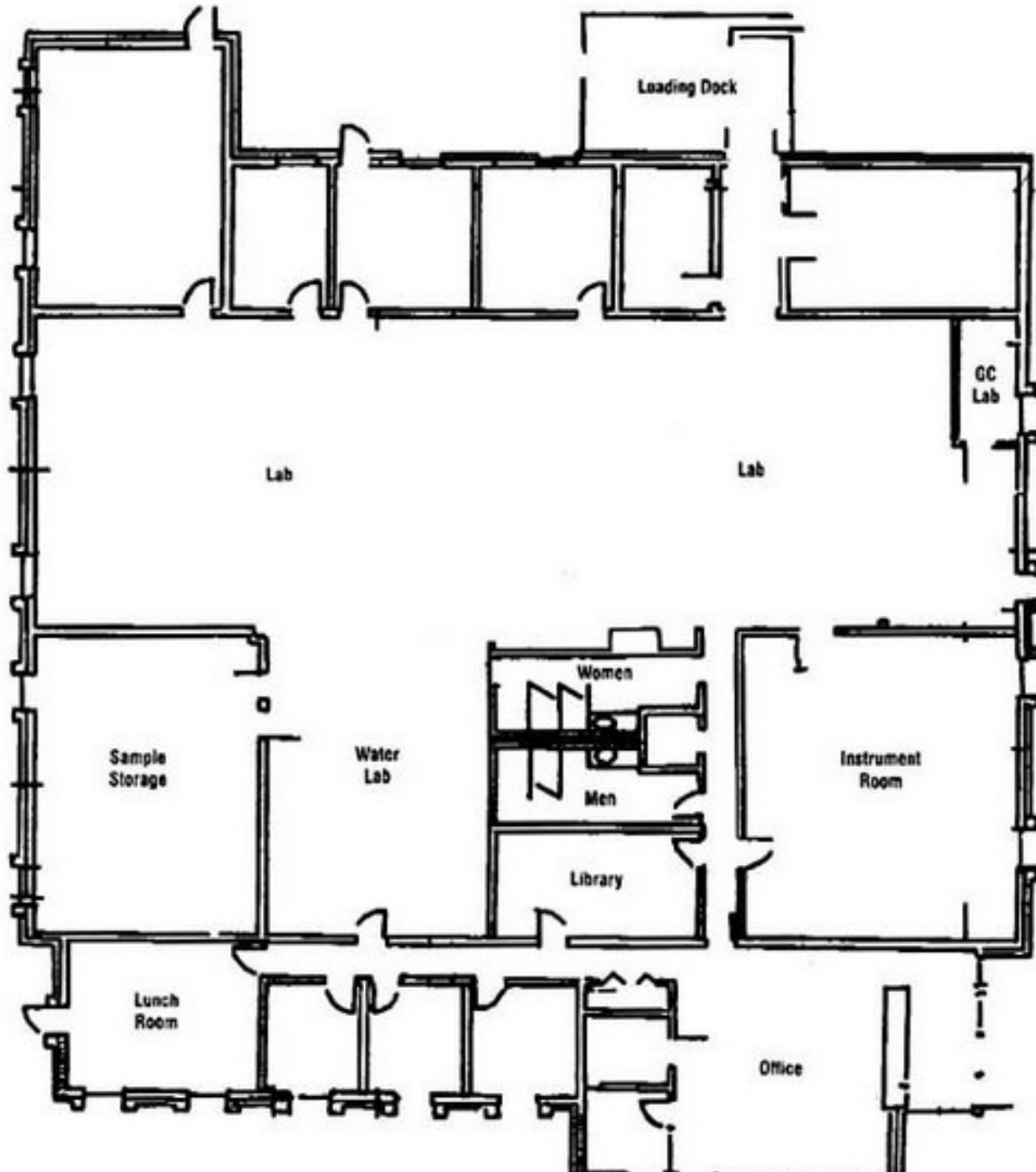
Every effort has been made to provide accurate information, but no liability is assumed for errors and omissions

FOR SALE

12,624+/- SF Light Industrial Building

1763 Montreal Circle, Tucker, GA 30084

KING Industrial
Realty, Inc.



Floor Plan

For More Information Contact:

STEVE RATCHFORD, SIOR, CCIM

Senior Vice President

404.942.2003

sratchford@kingindustrial.com



1920 Monroe Dr., NE, Atlanta, GA 30324 • 404.942.2000 • www.kingindustrial.com

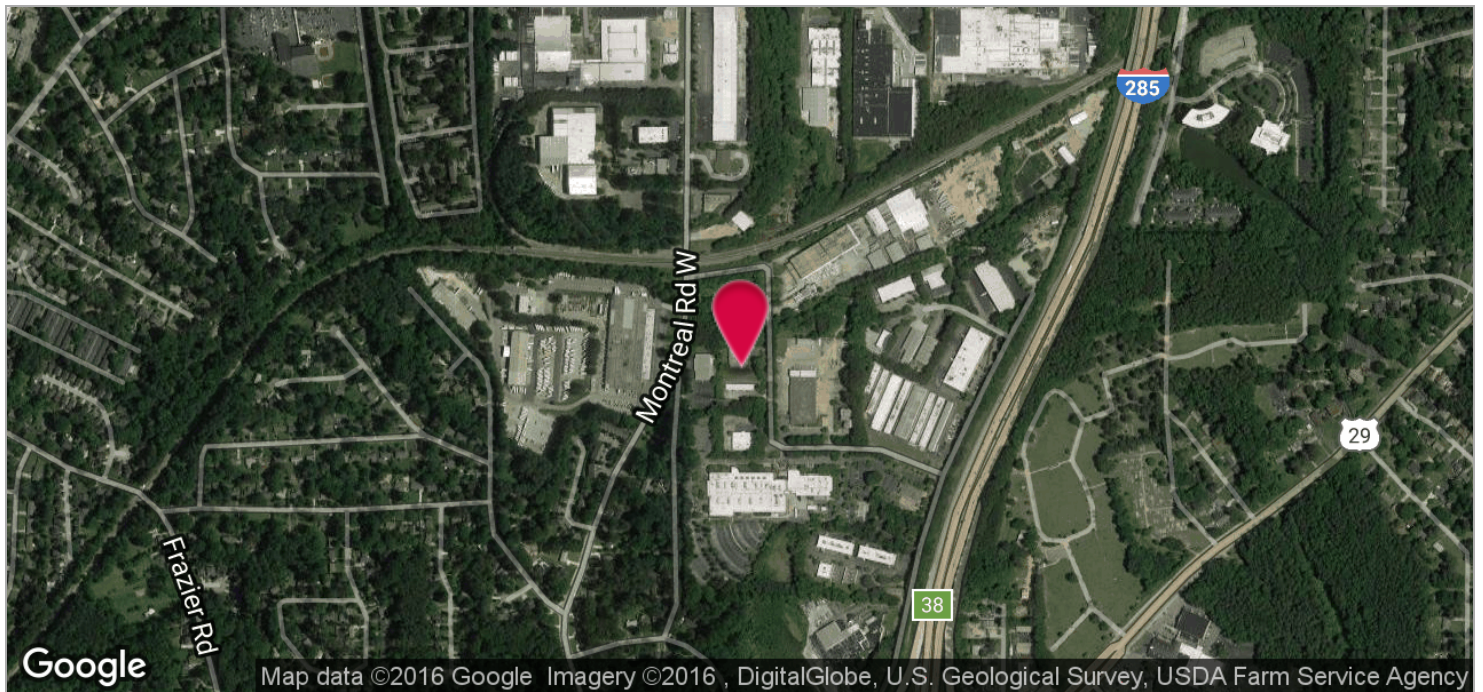
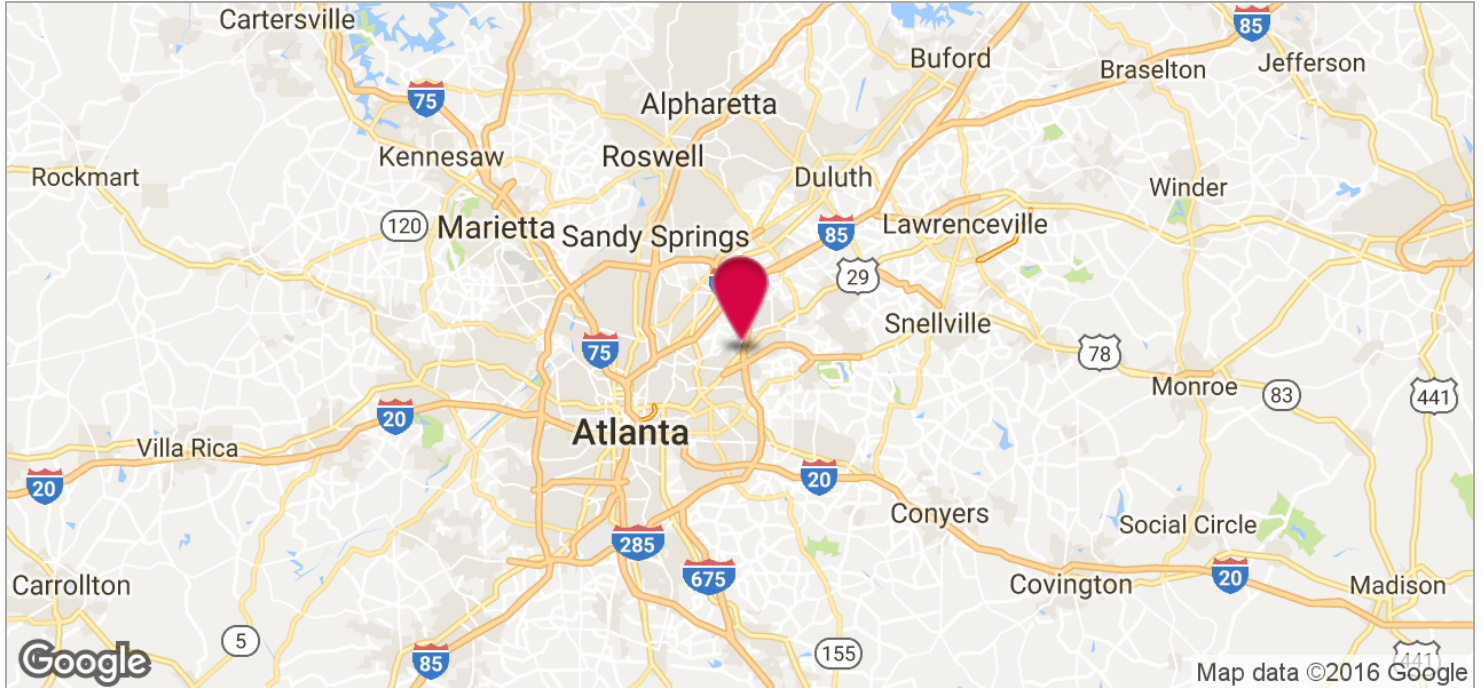
Every effort has been made to provide accurate information, but no liability is assumed for errors and omissions

FOR SALE

12,624+/- SF Light Industrial Building

1763 Montreal Circle, Tucker, GA 30084

KING Industrial
Realty, Inc.



For More Information Contact:

STEVE RATCHFORD, SIOR, CCIM

Senior Vice President

404.942.2003

sratchford@kingindustrial.com



1920 Monroe Dr., NE. Atlanta, GA 30324 • 404.942.2000 • www.kingindustrial.com

Every effort has been made to provide accurate information, but no liability is assumed for errors and omissions