



INDUSTRIAL BUILDING FOR LEASE

1123 Madison Street, Brainerd, MN 56401

C|C CLOSE CONVERSE
Commercial Real Estate | Business Brokerage

521 Charles Street, PO Box 327, Brainerd, MN 56401 | 218-828-3334 | www.closeconverse.com

1123 Madison Street, Brainerd, MN 56401

Table of Contents

Page

3-4	Features
5	Floor Plan
6-7	Photos
8	Aerial Photos
9	Section Aerial
10	Section Map
11	Zoning Map
12-13	Zoning Description
14	Traffic Counts
15	Location Map
16-17	Demographics
18	Thank You
19	Agency Disclosure
20	Contact

Close Converse: The above information has been obtained from the property owner or other sources that we deem reliable, however, neither the owner nor Close Converse guarantees the accuracy of such information. No part of this information may be reproduced, adapted, or transmitted without the prior written consent of Close Converse.

521 Charles Street, PO Box 327, Brainerd, MN 56401 | 218-828-3334 | www.closeconverse.com



CLOSE CONVERSE
Commercial Real Estate | Business Brokerage

1123 Madison Street, Brainerd, MN 56401

Features

Industrial Building.

Excellent opportunity to move or expand your operations to the Brainerd Industrial Park. Building is ideal for manufacturing or distribution companies seeking warehouse space with 4 oversized drive-in doors plus an interior raised-floor unloading dock.



Address:	1123 Madison Street, Brainerd, MN 56401
Directions:	From Hwy 210 (Washington Street) / Hwy 371 (S 6th Street) intersection in Brainerd - South on S 6th Street - East on Wright Street - South on SE 10th Street - East on Madison Street - Property is on the North at 1123
Lot Size:	1.46 Acres (64,003 sq. ft.)
Lot Dimensions:	160.01' x 400'
Building Size:	6,528 sq. ft.
Lease Rate:	\$8.00/sq. ft. Triple Net
2023 Property Taxes:	\$5,112
Water & Sewer:	City
Heating:	Office: Electric Baseboards Warehouse: 2 Natural Gas Overhead Heaters
Cooling:	Office: Central Air - Electric Ground Unit
Electric:	200 Amp, Single Phase

Continued on next page.

Close Converse: The above information has been obtained from the property owner or other sources that we deem reliable, however, neither the owner nor Close Converse guarantees the accuracy of such information. No part of this information may be reproduced, adapted, or transmitted without the prior written consent of Close Converse.

521 Charles Street, PO Box 327, Brainerd, MN 56401 | 218-828-3334 | www.closeconverse.com

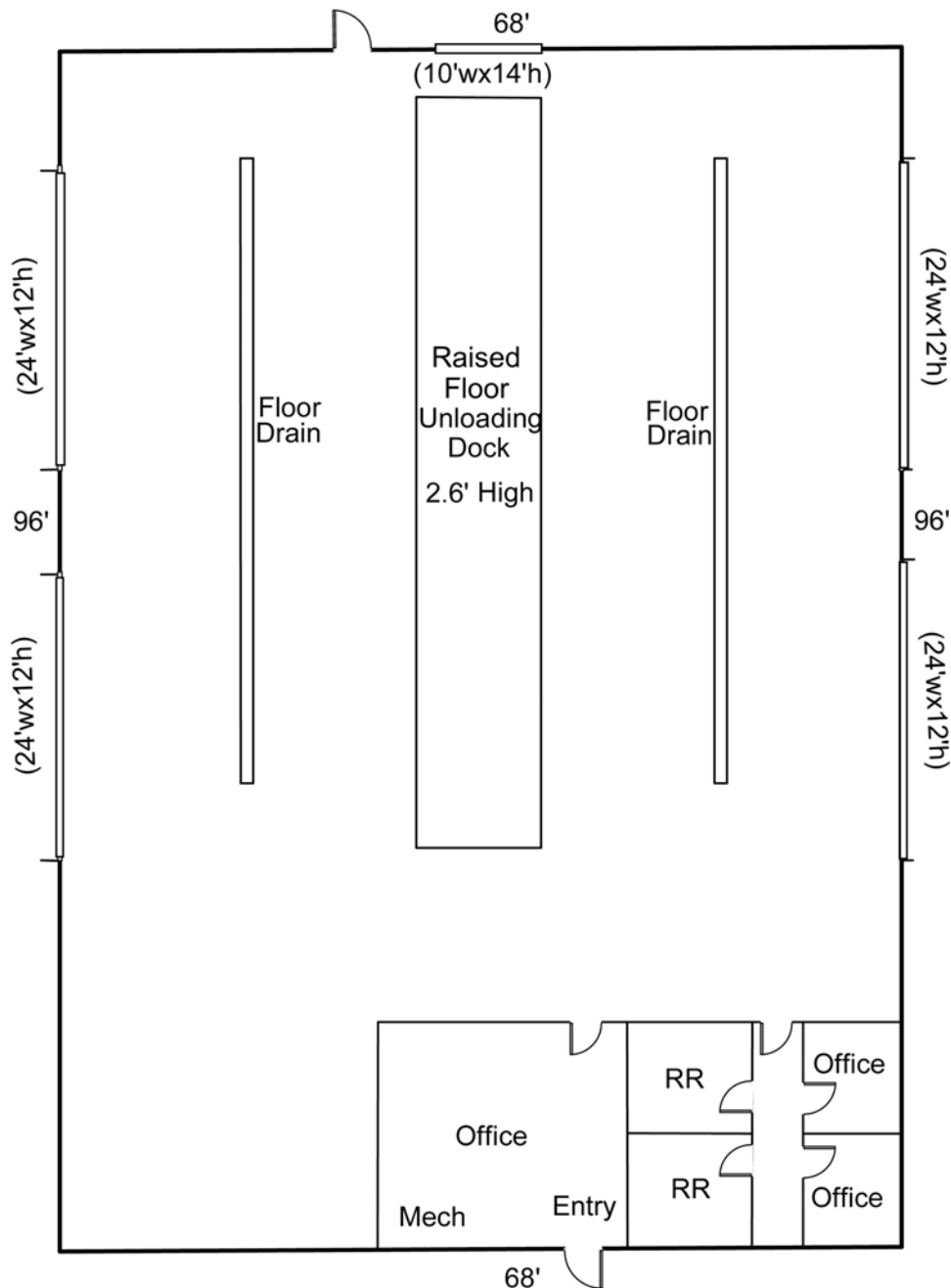
1123 Madison Street, Brainerd, MN 56401

Features

Lighting:	Fluorescent
Year Built:	1995
Construction:	Steel
Foundation:	Concrete
Roof:	Steel
Exterior:	Steel
Ceiling Height:	Office: 7'-6" Warehouse: 14' - 16'
Overhead Doors:	4 (24' W x 12' H) 1 (10' W x 14' H)
Loading Dock	Interior Rased-Floor Unloading Dock (2.6' High)
Sprinkled:	No
Floor Drains:	2 (50' Long) in Warehouse
Bathrooms:	2
Parking:	30+ Paved Parking Stalls
Frontage:	160.01' on Madison Street
Zoning:	GI - General Industrial
PID#:	41361116
Legacy PID#:	091110020030009
Legal Description:	Lot 3 Block 2, Except W 270 ft, Brainerd Industrial Park
Neighboring Businesses:	Located in the Brainerd Industrial Park, neighboring businesses include Hali-Brite, Green Forest Recycling, UPS, Digital Horizons, Heartland Tire, Royal Tire, Revolve Manufacturing, Advantage Seamless Gutters, Fleet Pride, CTC, Range Printing, Snodeos, C&L Distributing, Keystone Automotive, Precision Tool, AWG, American Steel, Dahlheimer Distributing, plus numerous others.

Close Converse: The above information has been obtained from the property owner or other sources that we deem reliable, however, neither the owner nor Close Converse guarantees the accuracy of such information. No part of this information may be reproduced, adapted, or transmitted without the prior written consent of Close Converse.

Floor Plan



Close Converse: The above information has been obtained from the property owner or other sources that we deem reliable, however, neither the owner nor Close Converse guarantees the accuracy of such information. No part of this information may be reproduced, adapted, or transmitted without the prior written consent of Close Converse.



1123 Madison Street, Brainerd, MN 56401

Photos



SW Corner of Building



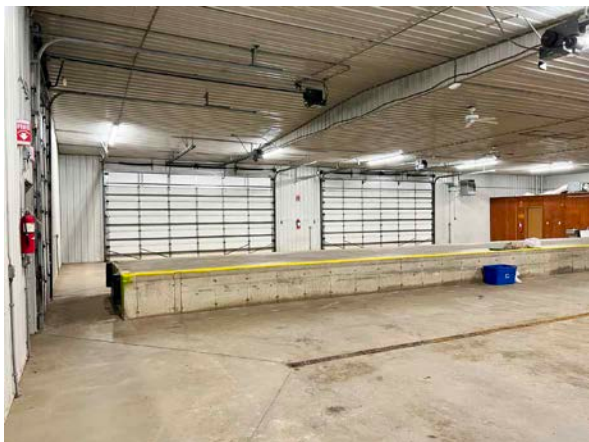
NE Corner of Building



Warehouse



Warehouse



Warehouse



Warehouse

Close Converse: The above information has been obtained from the property owner or other sources that we deem reliable, however, neither the owner nor Close Converse guarantees the accuracy of such information. No part of this information may be reproduced, adapted, or transmitted without the prior written consent of Close Converse.

521 Charles Street, PO Box 327, Brainerd, MN 56401 | 218-828-3334 | www.closeconverse.com



Office Area in Warehouse



Large Office



Large Office



Office



Office



Restroom

Close Converse: The above information has been obtained from the property owner or other sources that we deem reliable, however, neither the owner nor Close Converse guarantees the accuracy of such information. No part of this information may be reproduced, adapted, or transmitted without the prior written consent of Close Converse.

1123 Madison Street, Brainerd, MN 56401

Aerial Photo



Close Converse: The above information has been obtained from the property owner or other sources that we deem reliable, however, neither the owner nor Close Converse guarantees the accuracy of such information. No part of this information may be reproduced, adapted, or transmitted without the prior written consent of Close Converse.



CLOSE CONVERSE
Commercial Real Estate | Business Brokerage

521 Charles Street, PO Box 327, Brainerd, MN 56401 | 218-828-3334 | www.closeconverse.com

1123 Madison Street, Brainerd, MN 56401

Section Aerial



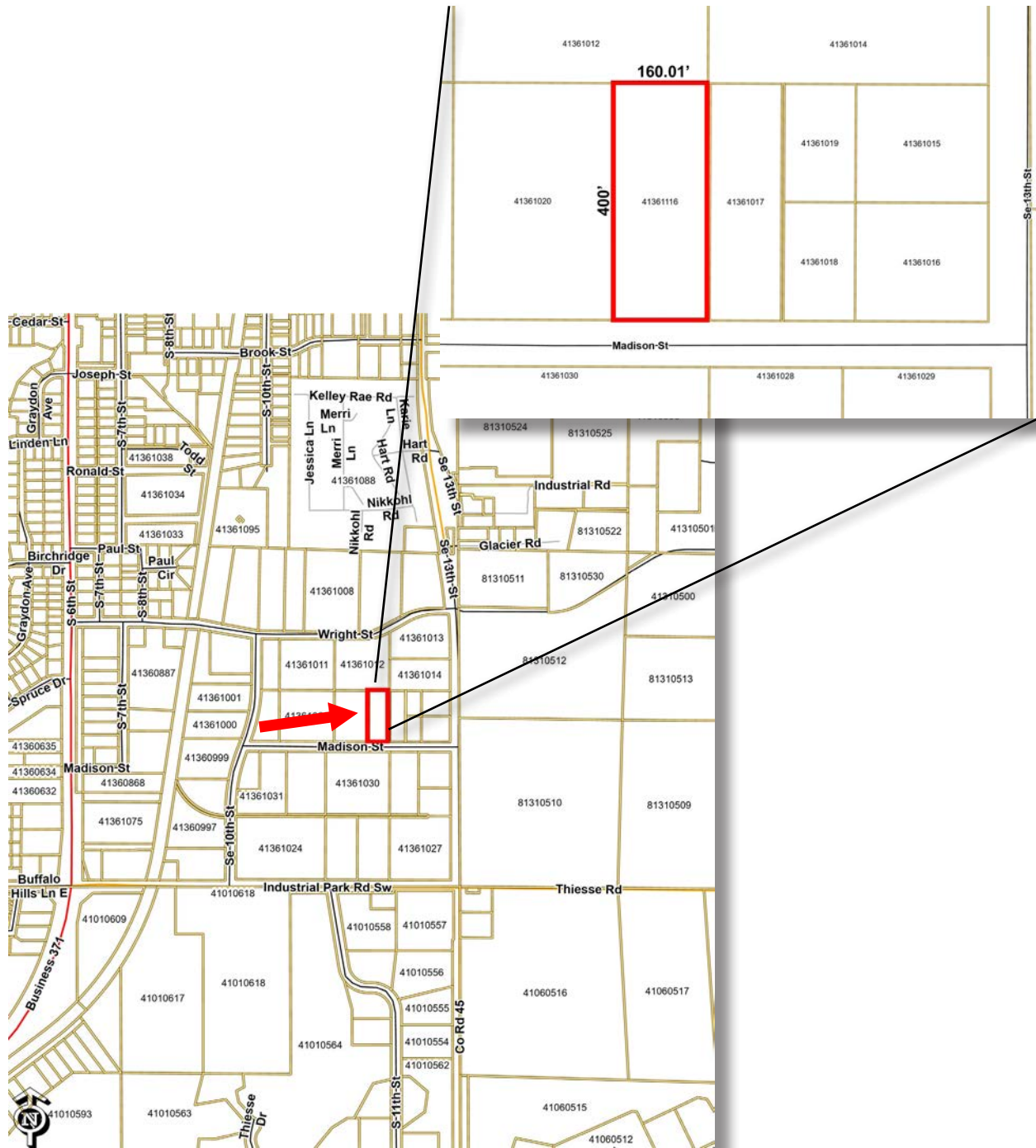
Close Converse: The above information has been obtained from the property owner or other sources that we deem reliable, however, neither the owner nor Close Converse guarantees the accuracy of such information. No part of this information may be reproduced, adapted, or transmitted without the prior written consent of Close Converse.



CLOSE CONVERSE
Commercial Real Estate | Business Brokerage

1123 Madison Street, Brainerd, MN 56401

Section Map



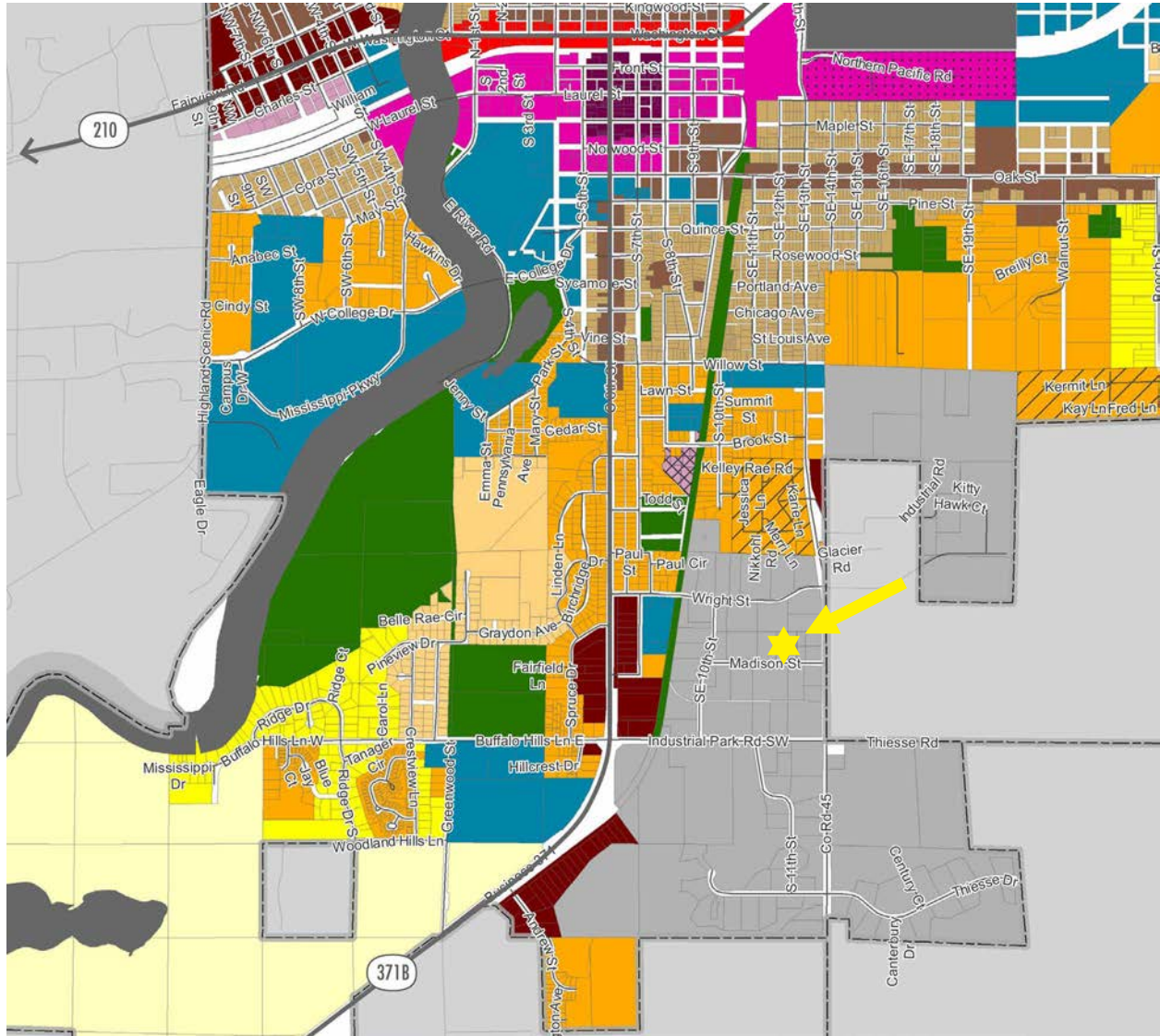
Close Converse: The above information has been obtained from the property owner or other sources that we deem reliable, however, neither the owner nor Close Converse guarantees the accuracy of such information. No part of this information may be reproduced, adapted, or transmitted without the prior written consent of Close Converse.



CLOSE CONVERSE
Commercial Real Estate | Business Brokerage

521 Charles Street, PO Box 327, Brainerd, MN 56401 | 218-828-3334 | www.closeconverse.com

GI - General Industrial



Zoning Districts

- Rural Living 1 (RL-1)
- Rural Living 2 (RL-2)
- Garden Living (GL)
- Contemporary Neighborhood 1 (CN-1)
- Contemporary Neighborhood 2 (CN-2)
- General Commercial (GC)
- Commercial Corridor (CC)
- Traditional Neighborhood 1 (TN-1)
- Traditional Neighborhood 2 (TN-2)
- Town Center (TC)
- Main Street (MS)
- Makers and Employment (ME)
- General Industrial (GI)
- Park (P)
- Public/Semi-Public (PSP)

Overlay

- Brook Street Industrial Overlay (BSI-O)
- Manufactured Housing Overlay (MH-O)
- Northern Pacific Center Overlay (PUD)

Close Converse: The above information has been obtained from the property owner or other sources that we deem reliable, however, neither the owner nor Close Converse guarantees the accuracy of such information. No part of this information may be reproduced, adapted, or transmitted without the prior written consent of Close Converse.



Zoning Description

515-2-16 General Industrial Zoning District (GI)

Purpose of General Industrial Zoning District. The purpose of the GI Zoning District is to provide for the establishment of heavy industry and manufacturing development and use which because of the nature of the product or character of activity, requires isolation from residential and commercial uses.

Permitted Uses. See Appendix A: Table of Uses.

General Industrial Zoning District Dimensional Standards. Table 515-2-16.1 identifies the Dimensional Standards for Principal and Accessory Structures.

Table 515-2-5.1. GI Dimensional Standards – Density, Lot Size, Coverage and Height Standards.

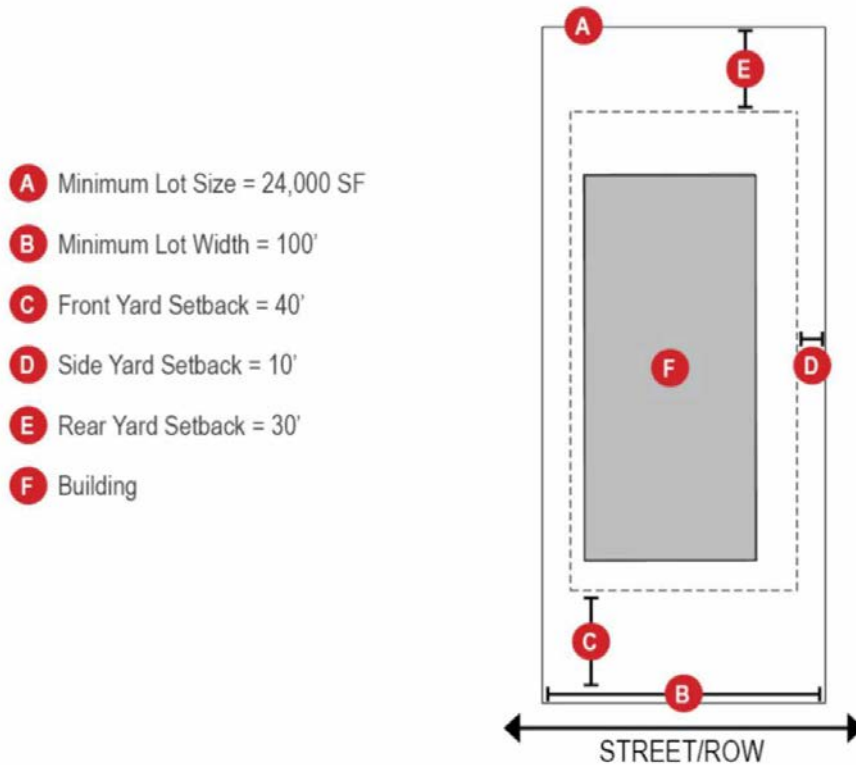
Lot Dimensions		
A	Lot Size (range) Density (range)	15,000 SF – 43,560 SF (1 Acre) 2 DU/Acre – 1 DU/Acre
B	Buildable Area	Area outside of all yard setbacks, and outside OHWL or Shoreland Setback for Riparian Lot
C	Lot Frontage on All Roads (minimum) Lot Frontage on cul-de-sac (minimum)	80' 45'
Principal Building & Attached Accessory Building Standards		
D	Front Yard Setback (minimum)	50'
E	Side Yard Setback (minimum)	15'
F	Rear Yard Setback (minimum)	30'
	Accessory Building SF, attached	Counts towards Total Allowable SF
	Accessory Building Number, attached	Does not count towards Permitted Number
Accessory Building Standards		
G	Location, detached	Riparian – Permitted in Front of Principal Building must be setback a minimum of 25' Non-Riparian – Behind Principal Building
H	Side Yard Setback, detached	10'
I	Rear Yard Setback, detached	20'/or if Riparian Shoreland Overlay Standards Apply
	Total Allowable Accessory Building SF	1,500 SF or 5%, whichever is greater
	Total Number of Permitted Accessory Buildings	3
	▪ Exception if no Attached Accessory Building is present, Number Permitted	4
	Accessory Dwelling Unit (ADU), attached or detached	Permitted
	▪ Maximum size of ADU (attached or detached)	650 SF
Coverage and Height Standards		
	Impervious Surface Coverage (maximum)	35%
	Principal structure height (maximum) See Section [515-4-3]	35'
	Accessory structure height (maximum)	Up to 35' but may not exceed height of principal structure

Continued on next page.

Close Converse: The above information has been obtained from the property owner or other sources that we deem reliable, however, neither the owner nor Close Converse guarantees the accuracy of such information. No part of this information may be reproduced, adapted, or transmitted without the prior written consent of Close Converse.

Zoning Description

Figure 515-2-16.1. GI Lot Dimensional Standards Diagram



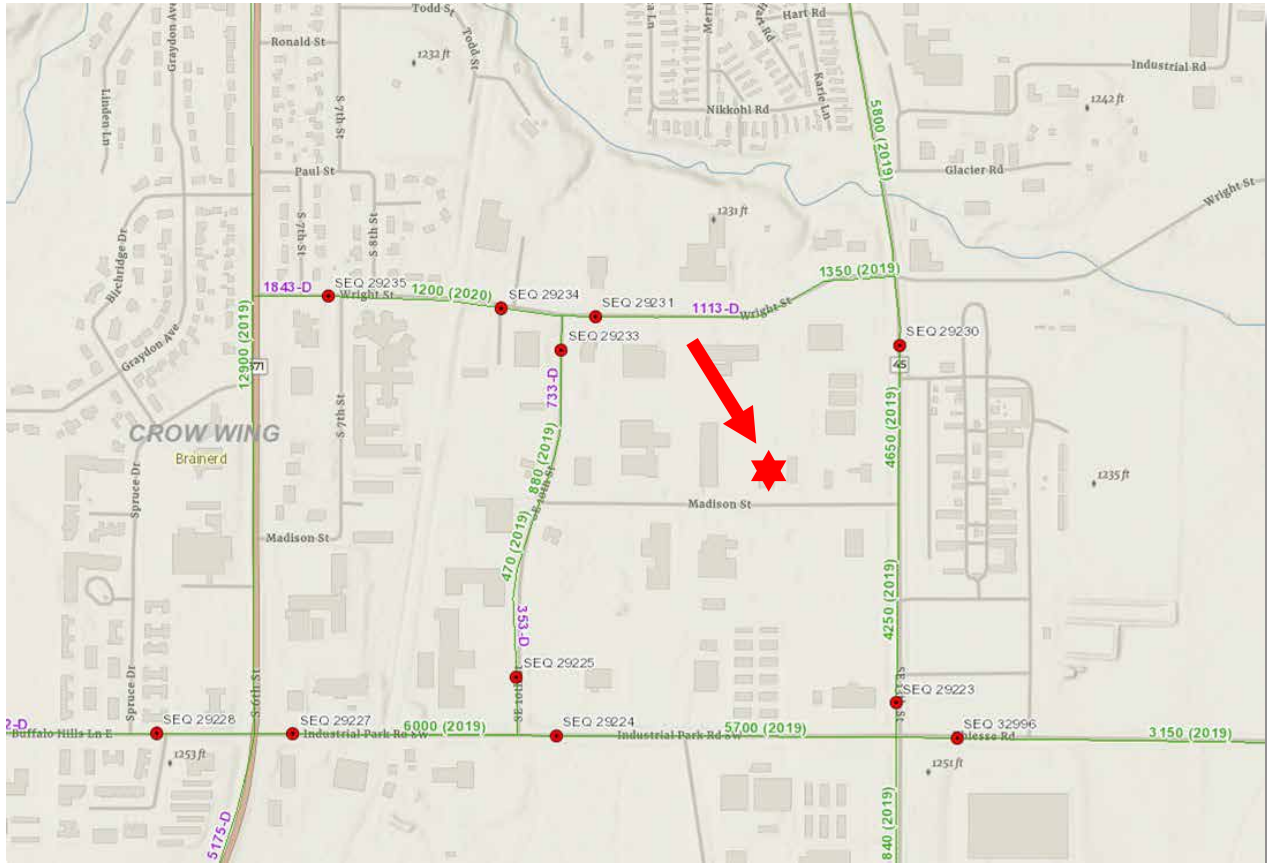
Close Converse: The above information has been obtained from the property owner or other sources that we deem reliable, however, neither the owner nor Close Converse guarantees the accuracy of such information. No part of this information may be reproduced, adapted, or transmitted without the prior written consent of Close Converse.

1123 Madison Street, Brainerd, MN 56401

Counts from MNDOT

Traffic Counts

Traffic Counts: 1,200 (2020) - 1,350 (2019) on Wright Street, 12,900 (2019) on Business Hwy 371 (S 6th Street), 4,250 (2019) - 4,650 (2019) on SE 14th Street (CR 45), 470 (2019) - 880 (2109) on SE 10th Street AND 5,700 (2019) Industrial Park Rd SW



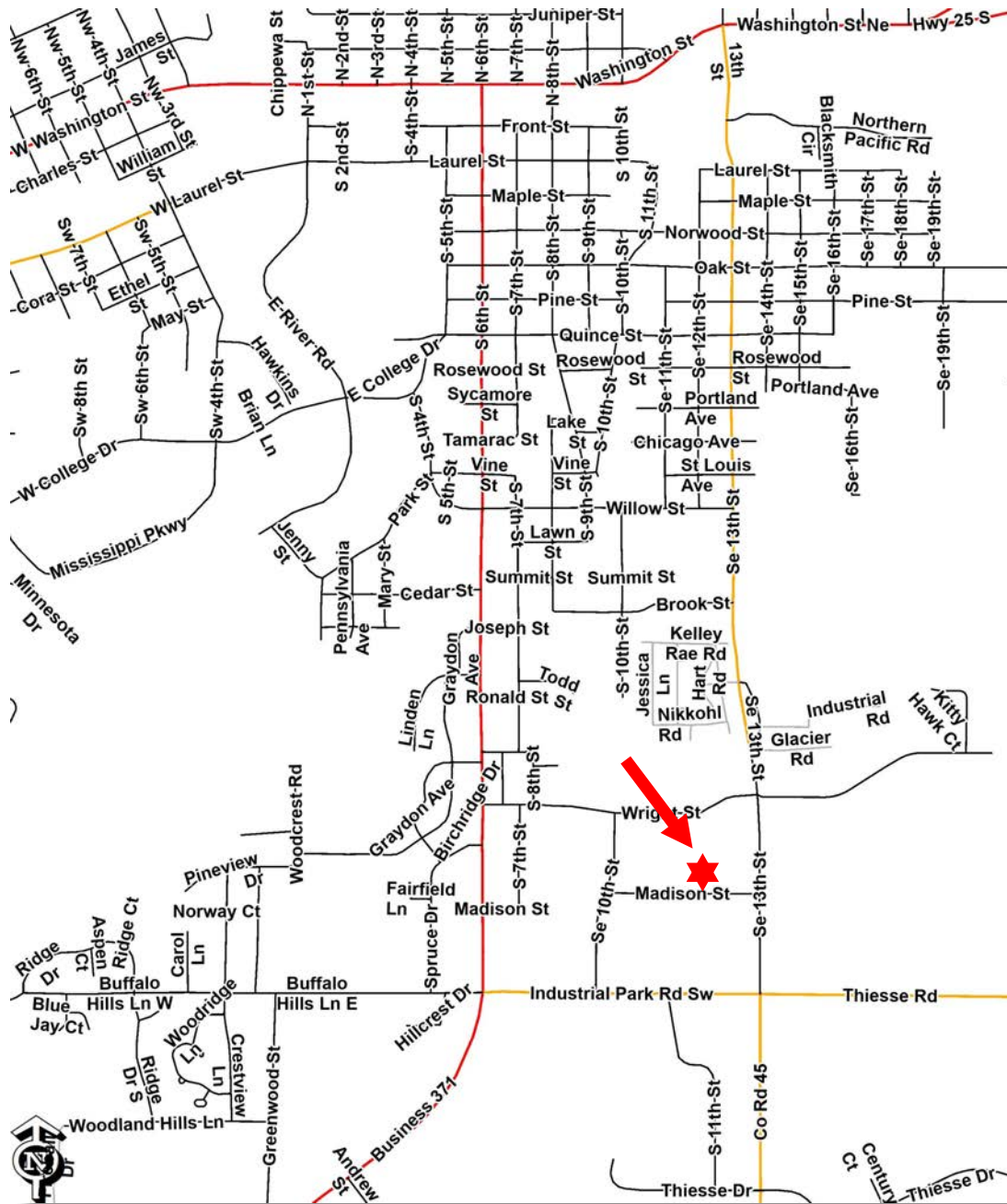
Close Converse: The above information has been obtained from the property owner or other sources that we deem reliable, however, neither the owner nor Close Converse guarantees the accuracy of such information. No part of this information may be reproduced, adapted, or transmitted without the prior written consent of Close Converse.



CLOSE CONVERSE
Commercial Real Estate | Business Brokerage

1123 Madison Street, Brainerd, MN 56401

Location Map



Close Converse: The above information has been obtained from the property owner or other sources that we deem reliable, however, neither the owner nor Close Converse guarantees the accuracy of such information. No part of this information may be reproduced, adapted, or transmitted without the prior written consent of Close Converse.



CLOSE CONVERSE
Commercial Real Estate | Business Brokerage

Trade Area 2022 Population (Includes the following counties):

Crow Wing County	66,474
Cass County	29,904
Total Trade Area Population	96,378

2022 Population:

Baxter	8,621
Brainerd	31,366

Estimated Summer Population:

Brainerd/Baxter	200,000+
-----------------	----------

Projected Population Growth Change 2022-2027:

Crow Wing County	0.29%
Brainerd	0.25%

Households in 2022:

Crow Wing County	28,100
Brainerd	12,964

2022 Median Household Income:

Crow Wing County	\$65,588
Brainerd	\$62,249

Crow Wing County Retail Sales in 2012:

\$1,124,967,000

Leading Employers in Crow Wing County in 2022:

- Essentia Health
- Cuyuna Regional Medical Center
- Brainerd School District
- Grandview Lodge
- Breezy Point Resort
- Ascensus
- Clow Stamping
- Crow Wing County
- Madden's Resort
- Cragun's Resort
- Walmart
- Ruttgers Bay Lake Resort
- Cub Foods/Super Valu (3 Stores)
- Central lakes College
- Anderson Brothers Construction
- Pequot Lakes School District
- Mills Automotive
- Bang Printing
- City of Brainerd
- Costco
- Bethany Good Samaritan
- Woodland Good Samaritan
- Crosby Iron-ton School District
- Minnesota Care

Leading Employers Cont.:

- Landis + Gyr
- Northstar Plating
- Nortech Systems
- Lindar
- Avantech
- Reichert Bus
- Lexington
- Growth Zone
- CTC
- Stern Companies
- BTD
- MNDOT
- MNDNR
- TDS
- Graphic Packaging
- Crow Wing Power

Continued on next page.

1123 Madison Street, Brainerd, MN 56401

Demographics

Area Businesses: (To see a list of additional businesses, please go to www.explorebrainerdlakes.com)

Financial Institutions: 16+
(multiple locations not counted)

Churches: 30+

Schools: 15+

Golf Courses: 27+

Resorts:

Birch Bay
Boyd Lodge
Breezy Point Resort
Craguns
Fritz's Resort
Grand View Lodge
Gull Lake Resort
Kavanaugh's
Lost Lake Lodge
Maddens
Manhattan Beach Lodge
Quarterdeck
Ruttger's Bay Lake Lodge
Sullivans
Plus numerous others

Major Retailers:

Aldi
Anytime Fitness
Ashley Furniture
Auto Zone
Best Buy
Brother's Motorsports
Cashwise Liquor (2)
Christmas Point
Costco
Cub Foods (2)
Dick's Sporting Goods
Discount Tire
Dondelinger
Dunham's Sports
East Brainerd Mall
(17 Retailers)
Fleet Farm
Home Depot
Home Goods
Hobby Lobby
Jiffy Lube
Kohl's

Major Retailers Continued:

Menards
Michaels
PetSmart
Planet Fitness
Super One
Super Wal-Mart
Takedown Gym
Target
The Power Lodge
TJ Maxx
Ulta Beauty
Walgreens
Westgate Mall
(27 Retailers)
Westside Liquor

Restaurants/Fast Food:

218 Local
371 Diner
612 Station
Antler's
Applebee's
Arby's
B-Merri
Baia Della Italian Kitchen
Bar Harbor
Baxter's
Billy's
Black Bear Lodge & Saloon
Blaze Pizza
Boulder Tap House
Breezy Point Marina
Buffalo Wild Wings
Burger King
Burritos California
Caribou Coffee (4)
Char
China Garden
Chipotle
Coco Moon
Cold Stone Creamery
Cowboy's
Cragun's Legacy Grill
Cru
Culver's
Dairy Queen (3)
Diamond House
Domino's Pizza (3)

Restaurants/Fast Food Continued:

Dough Bros.
Dunmire's (2)
Einstein Bagel
El Tequila
Ernie's
Firehouse Subs
Five Guys
Four Seas
Grizzly's Grill & Saloon
Hardee's
Hunt 'N Shack
Jack's House
Jersey Mike's
Jimmy John's
Jr's No. 19 BBQ
KFC
Little Caesar's
Loco Express
Lucky's
Madden's Classic Grill
Manhattan Beach
Maucieri's
McDonalds (2)
Moonlite Bay
Papa Murphy's Pizza
Perkins
Pine Peaks
Pizza Hut
Pizza Ranch
Poncho & Lefty's
Rafferty's Pizza (4)
Riverside Inn
Ruttger's
Sakura
Senor Patron
Sherwood North
Slice on Oak
Starbucks (3)
Subway (4)
Sunshine's Summer House
Taco Bell
Taco John's
The Barn
The Commander
The Pines at Grandview
Timberjack
Wendy's (2)
Ye Ole Wharf

Close Converse: The above information has been obtained from the property owner or other sources that we deem reliable, however, neither the owner nor Close Converse guarantees the accuracy of such information. No part of this information may be reproduced, adapted, or transmitted without the prior written consent of Close Converse.

1123 Madison Street, Brainerd, MN 56401

Thank You

Thank you for considering this Close - Converse opportunity

Close - Converse is pleased to present this real estate opportunity for your review. It is our intention to provide you with the breadth of information and data that will allow you to make an informed decision.

We are here to help

Please review this package and contact us with any questions you may have. We are prepared to discuss how this property meets your needs and desires. Facts, figures and background information will aid in your decision. Should you need specialized counsel in the areas of taxation, law, finance, or other areas of professional expertise, we will be happy to work with your advisor or, we can recommend competent professionals.

How to acquire this opportunity

When you have made a decision to move forward, we can help structure a proposal that covers all the complexities of a commercial real estate transaction. As seller's representatives, we know the seller's specific needs and can tailor a proposal that expresses your desires, provides appropriate contingencies for due diligence and results in a win-win transaction for all parties.

Agency and you

Generally, we are retained by sellers or landlords to represent them in the packaging and marketing of their commercial, investment or development real estate. You are encouraged to review the Minnesota disclosure form "Agency Relationships in Real Estate Transactions" which is enclosed at the end of this package. If you have questions about agency and how it relates to your search for the right property, please ask us. We will answer all your questions and review the alternatives.

Should you wish to pursue this opportunity, please acknowledge your review of "Agency Relationships" by signing, dating and returning it to us.

Close Converse: The above information has been obtained from the property owner or other sources that we deem reliable, however, neither the owner nor Close Converse guarantees the accuracy of such information. No part of this information may be reproduced, adapted, or transmitted without the prior written consent of Close Converse.

521 Charles Street, PO Box 327, Brainerd, MN 56401 | 218-828-3334 | www.closeconverse.com

Agency Disclosure

AGENCY RELATIONSHIPS IN REAL ESTATE TRANSACTIONS

1. Page 1

2. **MINNESOTA LAW REQUIRES** that early in any relationship, real estate brokers or salespersons discuss with consumers what type of agency representation or relationship they desire.⁽¹⁾ The available options are listed below. This is not a contract. This is an agency disclosure form only. If you desire representation you must enter into a written contract, according to state law (a listing contract or a buyer/tenant representation contract). Until such time as you choose to enter into a written contract for representation, you will be treated as a customer and will not receive any representation from the broker or salesperson. The broker or salesperson will be acting as a Facilitator (see paragraph IV on page two (2)), unless the broker or salesperson is representing another party, as described below.

9. **ACKNOWLEDGMENT: I/We acknowledge that I/we have been presented with the below-described options. I/We understand that until I/we have signed a representation contract, I/we am/are not represented by the broker/salesperson. I/We understand that written consent is required for a dual agency relationship.**

12. **THIS IS A DISCLOSURE ONLY, NOT A CONTRACT FOR REPRESENTATION.**

13. _____ (Signature) _____ (Date) _____ (Signature) _____ (Date)

14. I. **Seller's/Landlord's Broker:** A broker who lists a property, or a salesperson who is licensed to the listing broker, represents the Seller/Landlord and acts on behalf of the Seller/Landlord. A Seller's/Landlord's broker owes to the Seller/Landlord the fiduciary duties described on page two (2).⁽²⁾ The broker must also disclose to the Buyer material facts as defined in MN Statute 82.68, Subd. 3, of which the broker is aware that could adversely and significantly affect the Buyer's use or enjoyment of the property. (MN Statute 82.68, Subd. 3 does not apply to rental/lease transactions.) If a broker or salesperson working with a Buyer/Tenant as a customer is representing the Seller/Landlord, he or she must act in the Seller's/Landlord's best interest and must tell the Seller/Landlord any information disclosed to him or her, except confidential information acquired in a facilitator relationship (see paragraph IV on page two (2)). In that case, the Buyer/Tenant will not be represented and will not receive advice and counsel from the broker or salesperson.

24. II. **Buyer's/Tenant's Broker:** A Buyer/Tenant may enter into an agreement for the broker or salesperson to represent and act on behalf of the Buyer/Tenant. The broker may represent the Buyer/Tenant only, and not the Seller/Landlord, even if he or she is being paid in whole or in part by the Seller/Landlord. A Buyer's/Tenant's broker owes to the Buyer/Tenant the fiduciary duties described on page two (2).⁽²⁾ The broker must disclose to the Buyer material facts as defined in MN Statute 82.68, Subd. 3, of which the broker is aware that could adversely and significantly affect the Buyer's use or enjoyment of the property. (MN Statute 82.68, Subd. 3 does not apply to rental/lease transactions.) If a broker or salesperson working with a Seller/Landlord as a customer is representing the Buyer/Tenant, he or she must act in the Buyer's/Tenant's best interest and must tell the Buyer/Tenant any information disclosed to him or her, except confidential information acquired in a facilitator relationship (see paragraph IV on page two (2)). In that case, the Seller/Landlord will not be represented and will not receive advice and counsel from the broker or salesperson.

35. III. **Dual Agency - Broker Representing both Seller/Landlord and Buyer/Tenant:** Dual agency occurs when one broker or salesperson represents both parties to a transaction, or when two salespersons licensed to the same broker each represent a party to the transaction. Dual agency requires the informed consent of all parties, and means that the broker and salesperson owe the same duties to the Seller/Landlord and the Buyer/Tenant. This role limits the level of representation the broker and salesperson can provide, and prohibits them from acting exclusively for either party. In a dual agency, confidential information about price, terms and motivation for pursuing a transaction will be kept confidential unless one party instructs the broker or salesperson in writing to disclose specific information about him or her. Other information will be shared. Dual agents may not advocate for one party to the detriment of the other.⁽³⁾

44. Within the limitations described above, dual agents owe to both Seller/Landlord and Buyer/Tenant the fiduciary duties described below.⁽⁴⁾ Dual agents must disclose to Buyers material facts as defined in MN Statute 82.68, Subd. 3, of which the broker is aware that could adversely and significantly affect the Buyer's use or enjoyment of the property. (MN Statute 82.68, Subd. 3 does not apply to rental/lease transactions.)

48. _____ (initials) _____ (initials) I have had the opportunity to review the "Notice Regarding Predatory Offender Information" on page two. (2)

50. Page 2

51. IV. **Facilitator:** A broker or salesperson who performs services for a Buyer/Tenant, a Seller/Landlord or both but does not represent either in a fiduciary capacity as a Buyer's/Tenant's Broker, Seller's/Landlord's Broker or Dual Agent. **THE FACILITATOR BROKER OR SALESPERSON DOES NOT OWE ANY PARTY ANY OF THE FIDUCIARY DUTIES LISTED BELOW, EXCEPT CONFIDENTIALITY, UNLESS THOSE DUTIES ARE INCLUDED IN A WRITTEN FACILITATOR SERVICES AGREEMENT.** The facilitator broker or salesperson owes the duty of confidentiality to the party but owes no other duty to the party except those duties required by law or contained in a written facilitator services agreement, if any. In the event a facilitator broker or salesperson working with a Buyer/Tenant shows a property listed by the facilitator broker or salesperson, then the facilitator broker or salesperson must act as a Seller's/Landlord's Broker (see paragraph I on page one (1)). In the event a facilitator broker or salesperson, working with a Seller/Landlord, accepts a showing of the property by a Buyer/Tenant being represented by the facilitator broker or salesperson, then the facilitator broker or salesperson must act as a Buyer's/Tenant's Broker (see paragraph III on page one (1)).

63. ⁽¹⁾ This disclosure is required by law in any transaction involving property occupied or intended to be occupied by one to four families as their residence.

65. ⁽²⁾ The fiduciary duties mentioned above are listed below and have the following meanings:
66. **Loyalty** - broker/salesperson will act only in client(s)' best interest.
67. **Obedience** - broker/salesperson will carry out all client(s)' lawful instructions.
68. **Disclosure** - broker/salesperson will disclose to client(s) all material facts of which broker/salesperson has knowledge which might reasonably affect the client(s)' use and enjoyment of the property.
69. **Confidentiality** - broker/salesperson will keep client(s)' confidences unless required by law to disclose specific information (such as disclosure of material facts to Buyers).
70. **Reasonable Care** - broker/salesperson will use reasonable care in performing duties as an agent.
71. **Accounting** - broker/salesperson will account to client(s) for all client(s)' money and property received as agent.

74. ⁽³⁾ If Seller(s)/Landlord(s) elect(s) not to agree to a dual agency relationship, Seller(s)/Landlord(s) may give up the opportunity to sell/lease the property to Buyer(s)/Tenant(s) represented by the broker/salesperson. If Buyer(s)/Tenant(s) elect(s) not to agree to a dual agency relationship, Buyer(s)/Tenant(s) may give up the opportunity to purchase/lease properties listed by the broker.

78. **NOTICE REGARDING PREDATORY OFFENDER INFORMATION:** Information regarding the predatory offender registry and persons registered with the predatory offender registry under MN Statute 243.166 may be obtained by contacting the local law enforcement offices in the community where the property is located, or the Minnesota Department of Corrections at (651) 361-7200, or from the Department of Corrections Web site at www.corr.state.mn.us.

MN-AGCYDISC-2 (8/14)

Close Converse: The above information has been obtained from the property owner or other sources that we deem reliable, however, neither the owner nor Close Converse guarantees the accuracy of such information. No part of this information may be reproduced, adapted, or transmitted without the prior written consent of Close Converse.



1123 Madison Street, Brainerd, MN 56401

Contact

Office Location

521 Charles Street
Suite 201
Brainerd, MN 56401

Mailing Address

PO Box 327
Brainerd, MN 56401

Phone

218-828-3334

Fax

218-828-4330

Website

www.CloseConverse.com

Agents

Tim Miller, CCIM

C: 218-838-8772

tim@closeconverse.com

Chris Close, CCIM

C: 218-831-7510

chris@closeconverse.com

Brett A. Anderson

C: 218-232-3668

brett@closeconverse.com

Nate Grotzke, CCIM

C: 218-838-1000

nate@closeconverse.com

Close Converse: The above information has been obtained from the property owner or other sources that we deem reliable, however, neither the owner nor Close Converse guarantees the accuracy of such information. No part of this information may be reproduced, adapted, or transmitted without the prior written consent of Close Converse.

521 Charles Street, PO Box 327, Brainerd, MN 56401 | 218-828-3334 | www.closeconverse.com