

New! Business Park Lots For Sale

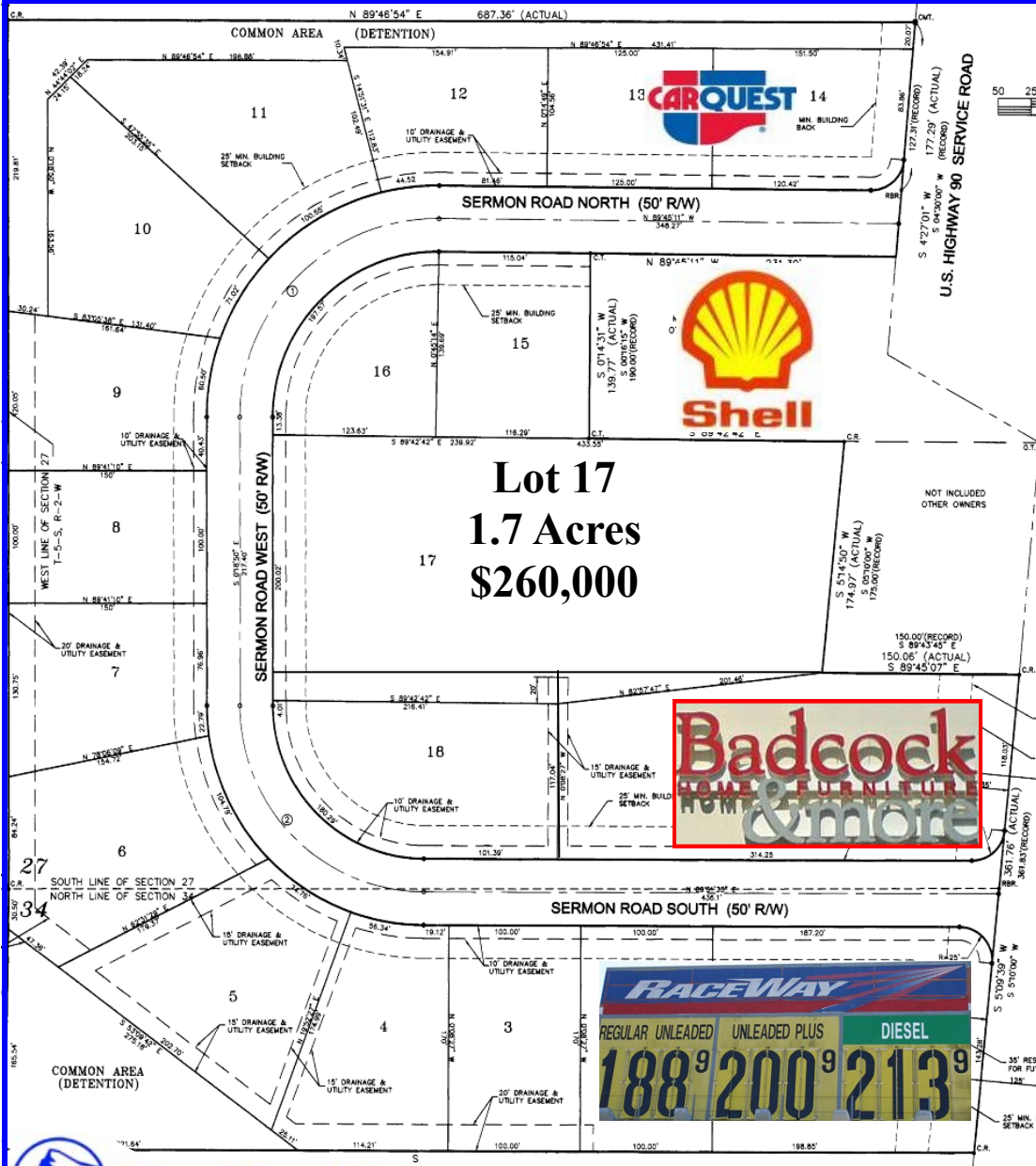
I-10 @ Hwy 90

Collins Subdivision

Sermon Rd
Theodore, Al. 36582

14 Commercial Park Lots For Sale

- City Water & Sewer Zoned B3
- Lots are level & already cleared.
- New roads, curbs, & gutters
- Traffic Light Access from Park to Highway 90.
- Less than 1,000 yards to I-10 Exit 15
- All Lots Priced at \$3.50/ Sq Ft. (\$48,500 & Up)



Lot #	Lot Sq Footage	Lot Pricing
3	17,000.00	\$ 59,500.00
4	21,222.00	\$ 74,277.00
5	22,677.00	\$ 79,369.50
6	22,529.00	\$ 78,851.50
7	18,040.00	\$ 63,140.00
8	15,000.00	\$ 52,500.00
9	16,575.00	\$ 58,012.50
10	18,015.00	\$ 63,052.50
11	21,464.00	\$ 75,124.00
12	13,873.00	\$ 48,555.50
15	16,779.00	\$ 58,726.50
16	14,395.00	\$ 50,382.50
17	74,139.00	\$ 259,486.50
18	28,659.00	\$ 100,306.50



Prudential
Cooper & Co. Inc.,
REALTORS®

Commercial Division
900 Hillcrest Rd. Suite A-5
Mobile, AL 36695
Off: 251-639-4007

David Cooper 251-583-1009
www.davidcooper@prucooper.com

Collins Business Park Lots For Sale

Property Photos



Lot #3 Located behind the Race Track Gas Station. Located in the front of park



Area Map: Directions from I-10. Take exit 15 to Hwy 90 west. Turn left at first traffic light into park (Sermon Rd)



Lot 18 + 17



Commercial Division
900 Hillcrest Rd. Suite A-5
Mobile, AL 36695
Off: 251-639-4007
Fax: 251-639-4018

David Cooper 251-583-1009
www.davidcooper@prucooper.com