

182 GRAND ST  
WILLIAMSBURG

COMMERCIAL LEASE



**182 GRAND ST**  
**WILLIAMSBURG**

**JUSTIN LOSH**  
(347) 388-4649  
JUSTIN@COUNTRYNY.COM

**OFFICE**  
250 MOORE ST, #302  
BROOKLYN, NY 11206



## PROPERTY DETAILS

 **\$9,500 PER MONTH**

 **1250 SF**  
**+ 650 SF SELLING BASEMENT**

 **NEGOTIABLE LEASE TERM**

 **VIDEO TOUR LINK**

FORMERLY SELF SALON

SELLING BASEMENT WITH  
SUBDIVISIONS AND ADDITIONAL  
STORAGE

PRIME WILLIAMSBURG LOCATION  
NEAR MAISON PREMIERE AND  
WILLIAMSBURG CINEMAS

CENTRAL HVAC, CONCRETE FLOORS,  
RESTROOM AND LARGE KITCHENETTE

PRIVATE REAR YARD FOR TENANT  
USE

DRY USES PREFERRED

**182 GRAND ST**  
**WILLIAMSBURG**

**JUSTIN LOSH**  
(347) 388-4649  
JUSTIN@COUNTRYNY.COM

**OFFICE**  
250 MOORE ST, #302  
BROOKLYN, NY 11206



## GROUND FLOOR SALON



**182 GRAND ST**  
**WILLIAMSBURG**

**JUSTIN LOSH**  
(347) 388-4649  
JUSTIN@COUNTRYNY.COM

**OFFICE**  
250 MOORE ST, #302  
BROOKLYN, NY 11206



## LOWER LEVEL ROOMS & KITCHEN



182 GRAND ST  
WILLIAMSBURG

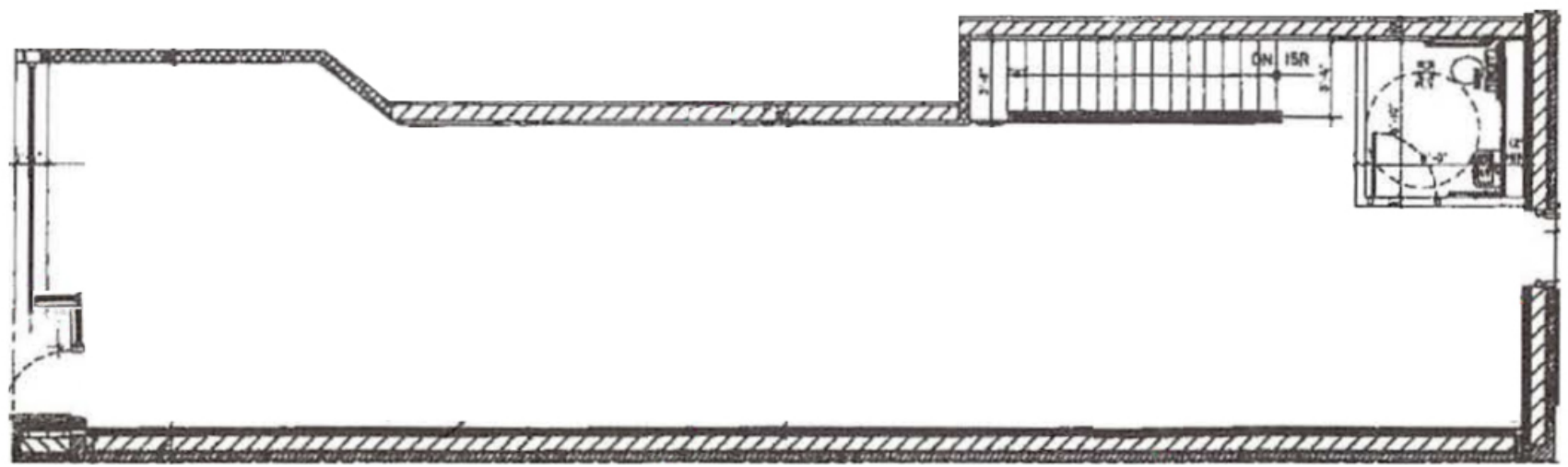
JUSTIN LOSH  
(347) 388-4649  
JUSTIN@COUNTRYNY.COM

OFFICE  
250 MOORE ST, #302  
BROOKLYN, NY 11206



## GROUND FLOOR PLAN

GRAND STREET



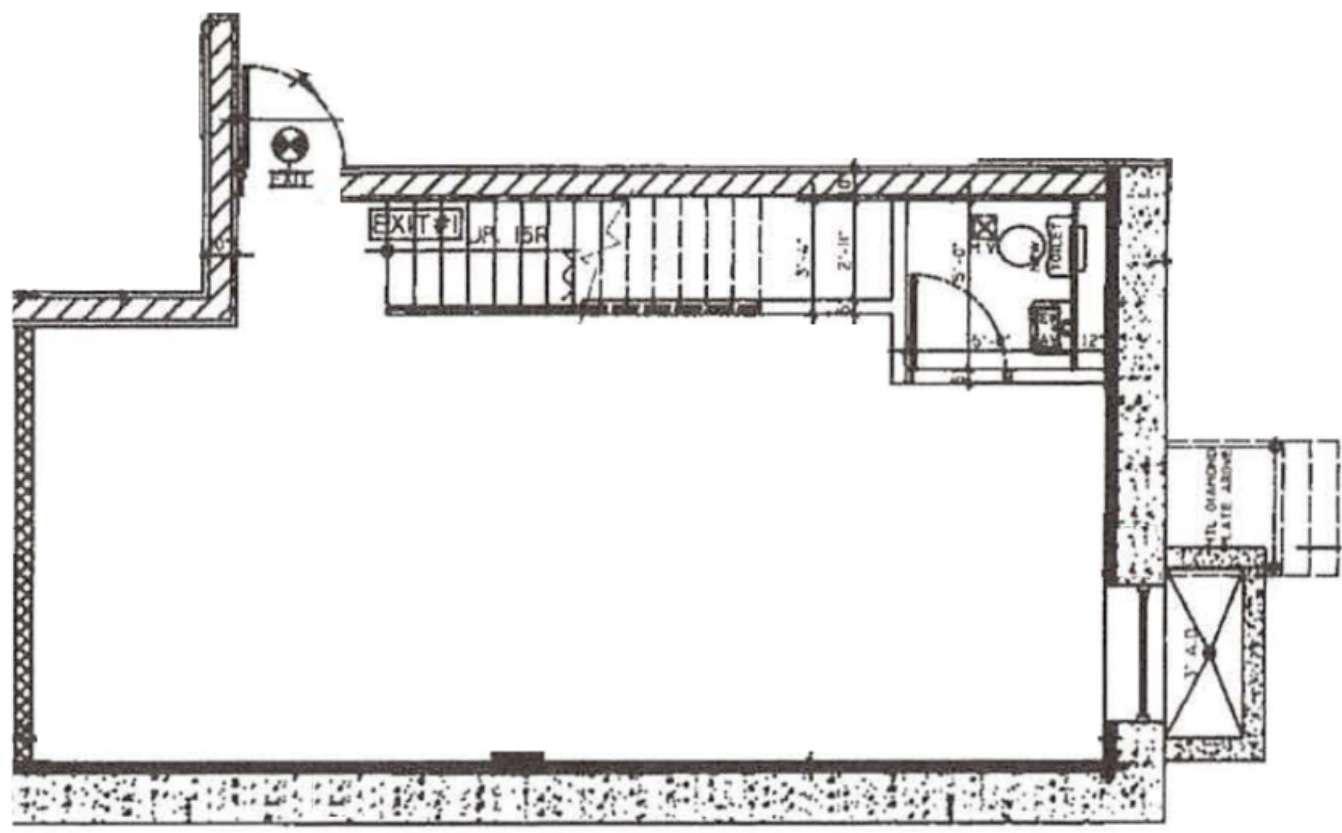
182 GRAND ST  
WILLIAMSBURG

JUSTIN LOSH  
(347) 388-4649  
JUSTIN@COUNTRYNY.COM

OFFICE  
250 MOORE ST, #302  
BROOKLYN, NY 11206



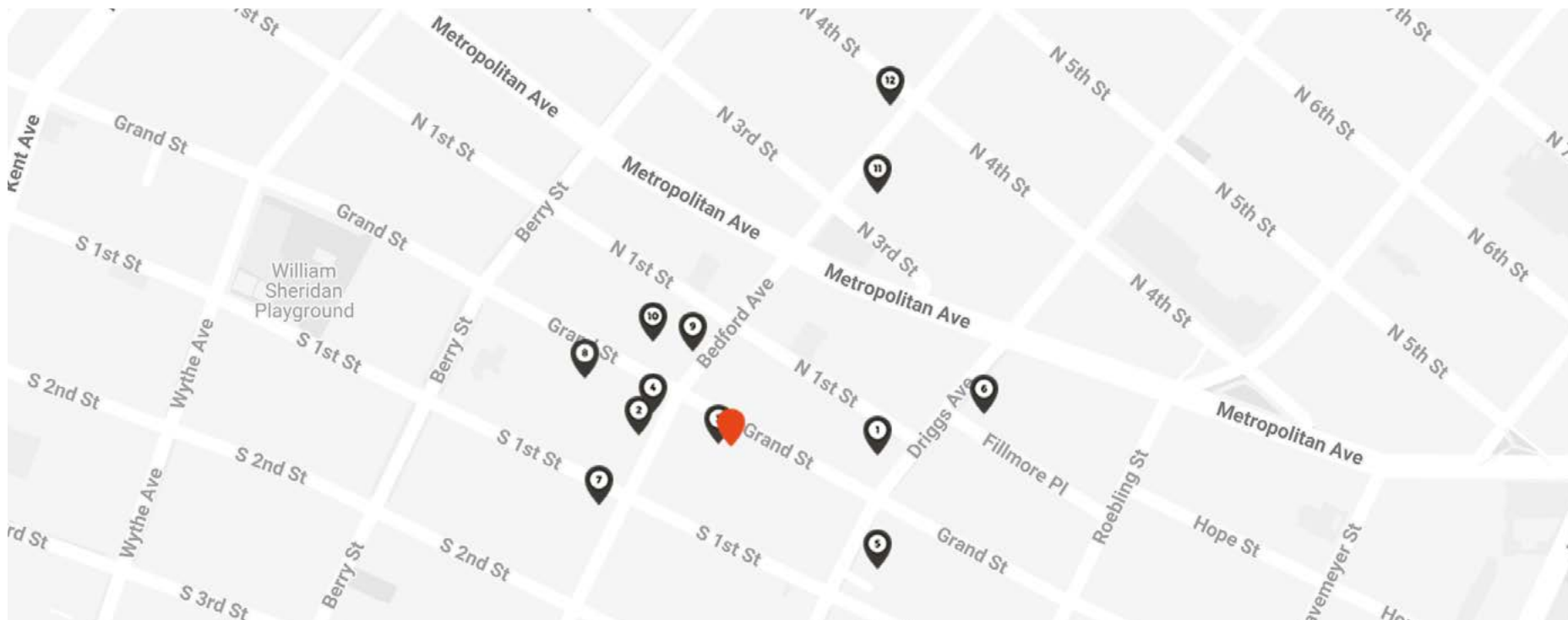
## BASEMENT FLOOR PLAN



# 182 GRAND ST WILLIAMSBURG

**JUSTIN LOSH**  
(347) 388-4649  
JUSTIN@COUNTRYNY.COM

**OFFICE**  
250 MOORE ST, #302  
BROOKLYN, NY 11206



## NEIGHBORS

- 1 - Williamsburg Cinema
- 2 - Maison Premiere
- 3 - Iona
- 4 - Hole in the Wall
- 5 - BonBon Swedish Candy
- 6 - La Bicyclette Bakery

- 7 - WILLIAMSBURG COMEDY CLUB
- 8 - Supreme
- 9 - Salt + Charcoal
- 10 - Fresh Kills Bar
- 11 - Apple Store
- 12 - Whole Foods

## DEMOGRAPHICS

(1MI/3MI)  
POPULATION - 149,989 / 1,348,409  
AVERAGE AGE - 33.6 / 36.1  
AVERAGE HH INCOME -  
\$120,449 - \$132,489

## TRANSPORT

L TRAIN: BEDFORD AVE  
AVERAGE DAILY RIDERS  
WEEKDAY - 23,653  
WEEKEND - 44,011