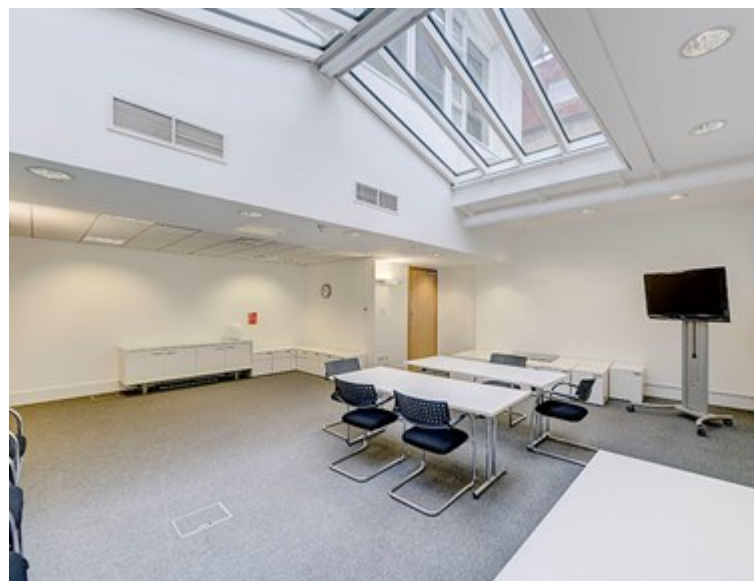


AWARD HOUSE, 7-11 ST MATTHEW STREET, LONDON SW1P 2JT

TUCKERMAN
CHARTERED SURVEYORS

OFFICE TO RENT | 2,872 SQ FT | £39.50 PSF



VICTORIA'S EXPERT PROPERTY ADVISORS

TUCKERMAN.CO.UK



TUCKERMAN

1 CASTLE LANE, VICTORIA,
LONDON SW1E 6DR

T (0) 20 7222 5511

OPEN PLAN AIR CONDITIONED OFFICE PREMISES TO LET



DESCRIPTION

The building is located on St Matthew Street, close to its junction with Old Pye Street. The building is located in Westminster and is surrounded by some excellent amenities, namely the Strutton Ground Market and the numerous shops and restaurants located on Victoria Street to the north. The office benefits from excellent transport connections with St James's Park Underground (District & Circle), Victoria Station (District & Circle, Victoria, National Rail) and Westminster Underground (District & Circle and Jubilee) all a 4 minute, 10 minute and an 11 minute walk respectively. Several bus routes also pass along Victoria Street.

The space itself comprises a well lit open plan work area benefiting from large sky lights and 5 fitted private offices/ meeting rooms. The office also benefits from a demised kitchen. The space is air conditioned throughout and benefits from perimeter mounted power and data. The office would suit lobbyists and think tanks alike, being only a short walk from the Houses of Parliament.

AVAILABILITY

FLOOR	SIZE (SQ FT)	AVAILABILITY
Ground	2,872	Available
TOTAL	2,872	

AMENITIES

- Air conditioning
- 5 fitted private offices/meeting rooms
- Demised kitchen
- Perimeter mounted power & data
- Short walk from Houses of Parliament

TERMS

RENT	RATES	S/C
£39.50 psf	£16.69 psf	TBC
Available by way of a new lease direct from the Landlord for a term by arrangement.		

EPC
Band D.

LINKS
Website

GET IN TOUCH

WILLIAM DICKSON
Tuckerman
020 3328 5374
wdickson@tuckerman.co.uk