

FOR LEASE

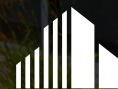
# SANTA FE BUSINESS CENTER

175 BOSSTICK BOULEVARD &  
2910, 2920, & 2930 NORMAN STRASSE ROAD, SAN MARCOS, CA 92069

INDUSTRIAL BUSINESS PARK

2910

UNIVERSAL QUARTZ, INC.



CUSHMAN &  
WAKEFIELD



Kidder  
Mathews

SANTA FE BUSINESS CENTER

175 BOSSTICK BOULEVARD &  
2910, 2920, & 2930 NORMAN STRASSE ROAD, SAN MARCOS, CA 92069



175 BOSSTICK BLVD.



2910 NORMAN STRASSE RD.



2920 NORMAN STRASSE RD.



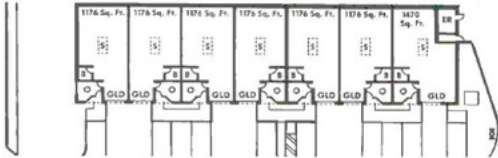
2930 NORMAN STRASSE RD.

PROJECT SUMMARY

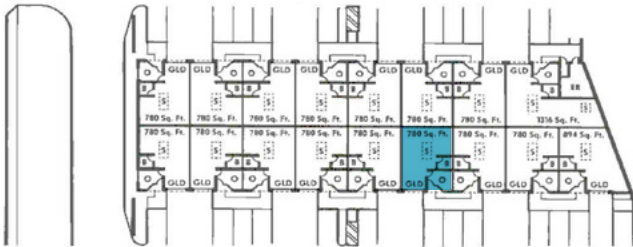
- Class B Industrial Manufacturing Buildings
- Suite size from 780 SF to 3216 SF
- Minimal office build-out with restrooms in each suite
- Grade level loading doors
- Convenient access to Highway 78
- Built in 1990
- Zoning: IP; San Marcos
- Parking: 2.0/1,000

SITE PLAN & AVAILABILITIES

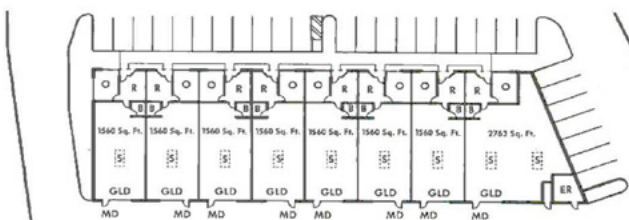
175 Bosstick Blvd.



2930 Norman Strasse Rd.



2920 Norman Strasse Rd.



2910 Norman Strasse Rd.



ADDRESS	SF	DESCRIPTION	LEASE RATE	AVAILABLE
2910 Norman Strasse Rd. Stes. 104-105	3,216	Reception, private offices, restroom & drop ceiling warehouse	\$0.95/SF MG	Now
2930 Norman Strasse Rd. Ste. 112	780	Reception, office, restroom & warehouse	\$1.15/SF MG	Now

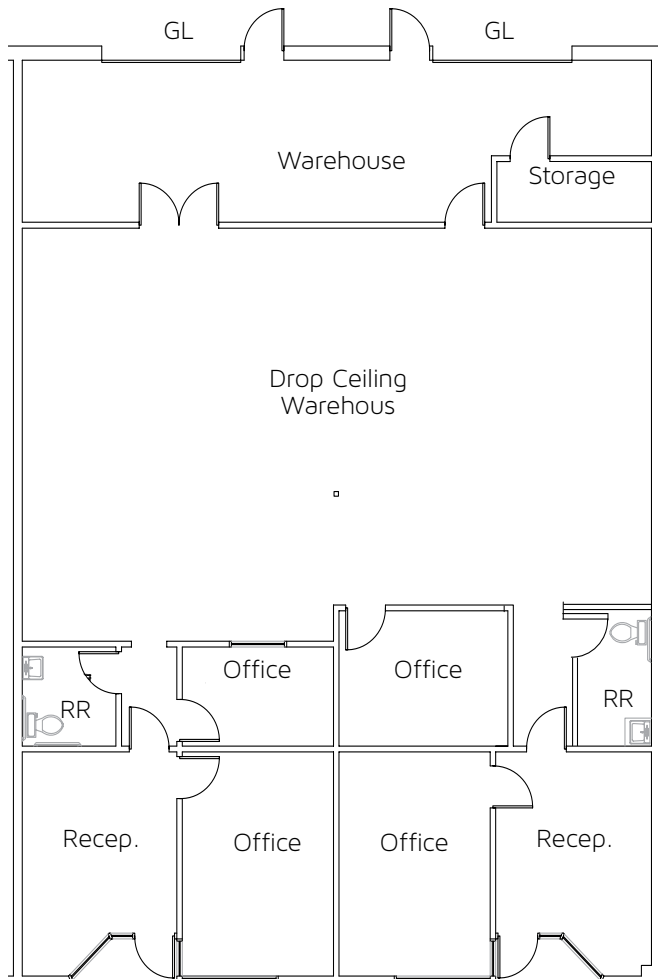
Each suite will be charged an \$0.08/SF CAM fee

\*Lockbox location

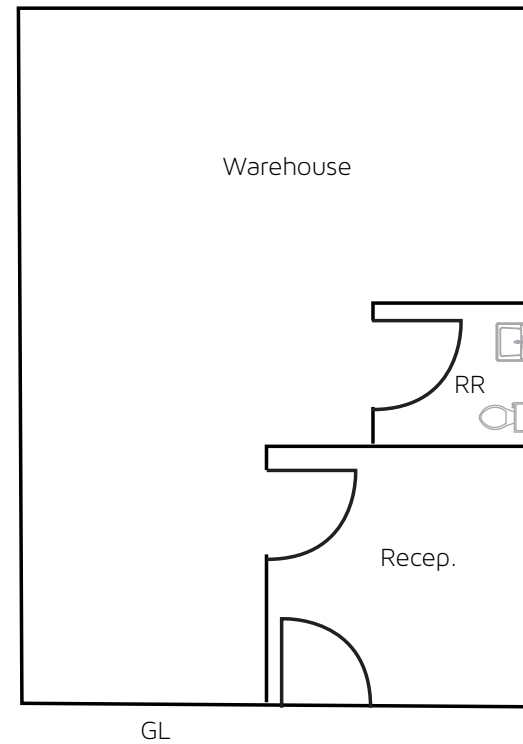


FLOOR PLANS

2910 NORMAN STRASSE RD.  
SUITES 104-105



2930 NORMAN STRASSE RD.  
SUITE 112

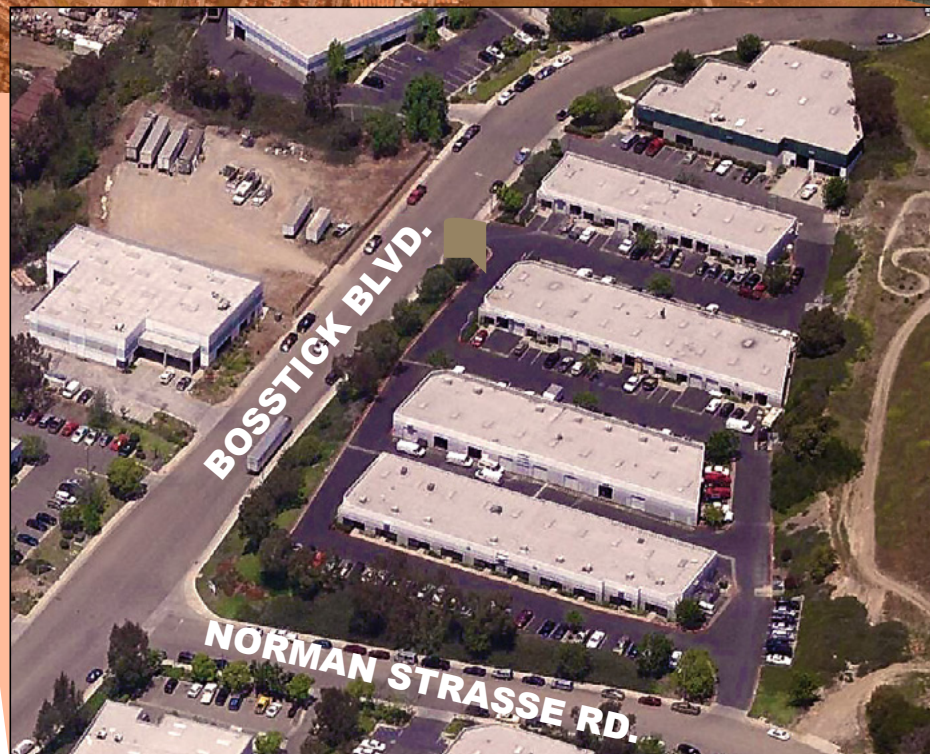
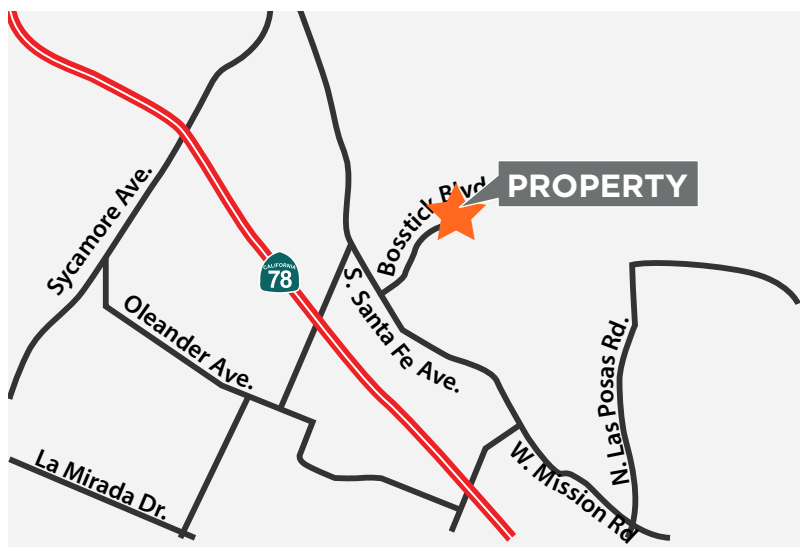
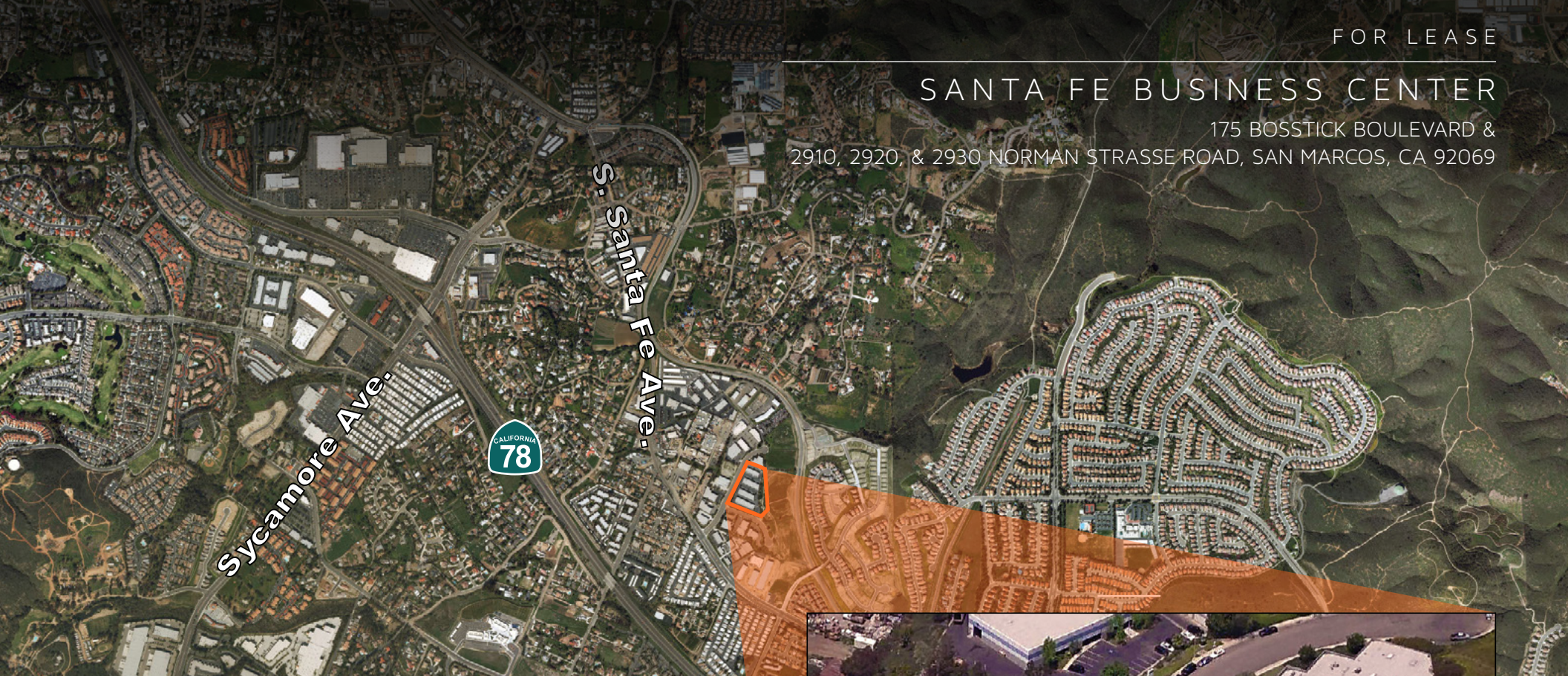


\*Floorplans not to scale.

FOR LEASE

# SANTA FE BUSINESS CENTER

175 BOSSTICK BOULEVARD &  
2910, 2920, & 2930 NORMAN STRASSE ROAD, SAN MARCOS, CA 92069



FOR LEASE

# SANTA FE BUSINESS CENTER

175 BOSSTICK BOULEVARD &  
2910, 2920, & 2930 NORMAN STRASSE ROAD, SAN MARCOS, CA 92069



## INDUSTRIAL LEASING

### CHRIS BAUMGART

+1 760 431 3847

chris.baumgart@cushwake.com

LIC #01888224

### TODD DAVIS

+1 858 369 3049

tdavis@kiddermathews.com

LIC #01383147

1000 Aviara Parkway, Suite 100

Carlsbad, California 92011

T: +1 760 431 4200

F: +1 760 454 3869

cushmanwakefield.com



Cushwake Copyright 2015. The information contained herein was lawfully obtained from sources we consider reliable. Cushwake is not responsible and expressly disclaims all liability, for errors, omissions, prior sales, withdrawal from the market or change in price. Seller (or Lessor, as the case may be) and broker make no representation as to the environmental condition of the property and recommend Purchaser's (or Lessee's) independent investigation.  
K:/Santa Fe Business Center/santa-fe\_business\_center-flyer-Cushwake.indd