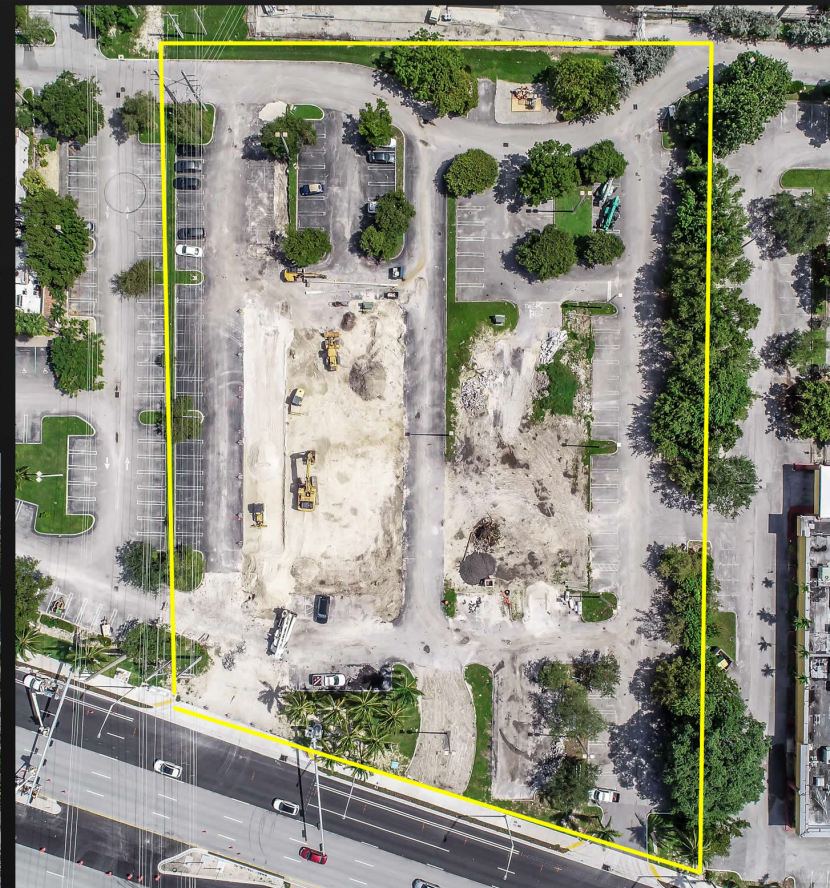
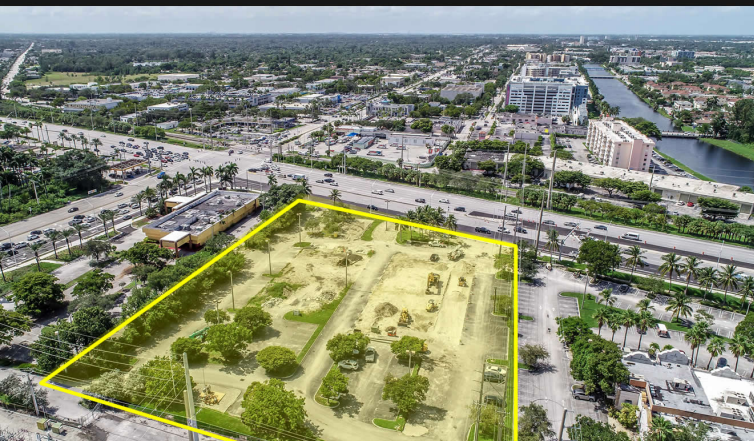
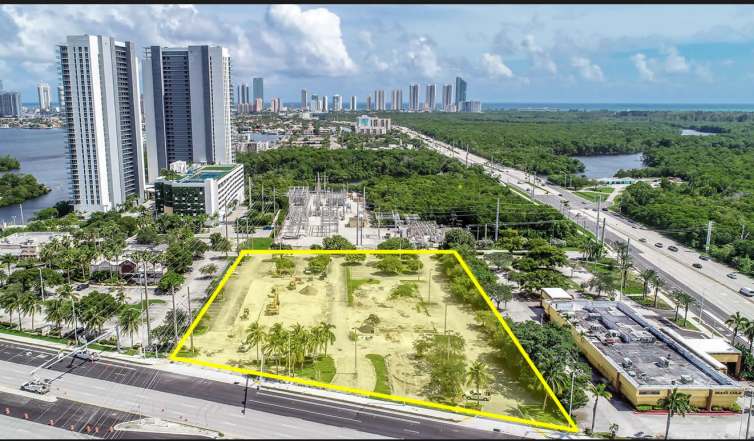


LAND FOR LEASE

163rd St & Biscayne Blvd - North Miami Beach, FL

70,000+ AVG DAILY TRAFFIC COUNT



LAND FOR LEASE

163rd St & Biscayne Blvd - North Miami Beach, FL

70,000+ AVG DAILY TRAFFIC COUNT

RARE LAND-LEASE OPPORTUNITY

Rare opportunity to lease nearly 3-acres of commercially-zoned vacant land in North Miami Beach along the corner of US-1 (Biscayne Boulevard) and the NE 163RD st Corridor which leads to Sunny Isles. The site consist of two adjacent parcels which can be leased together or seperately. The minimum leasable area is just over 1-acre, and the maximum is nearly 3 acres. Short term and/or seasonal leases are a possibility. Enjoy an extremely high-traffic count and tremendous exposure along one of the busiest intersections in South Florida.

- 70,000 Average Daily Traffic Count
- Nearly 3-acres of vacant land for lease
- Fully paved with concrete
- Along one of South Florida's Busiest intersections
- Frontage on Biscayne Boulevard (US-1)
- Commercial (MU) Zoning
- Seasonal/Short term leases OK
- 1-Acre minimum leasable area
- Possible uses included: Pop-ups, sales & leasing, events, fairs, entertainment, markets, food events

POTENTIAL USES



LOCATION

