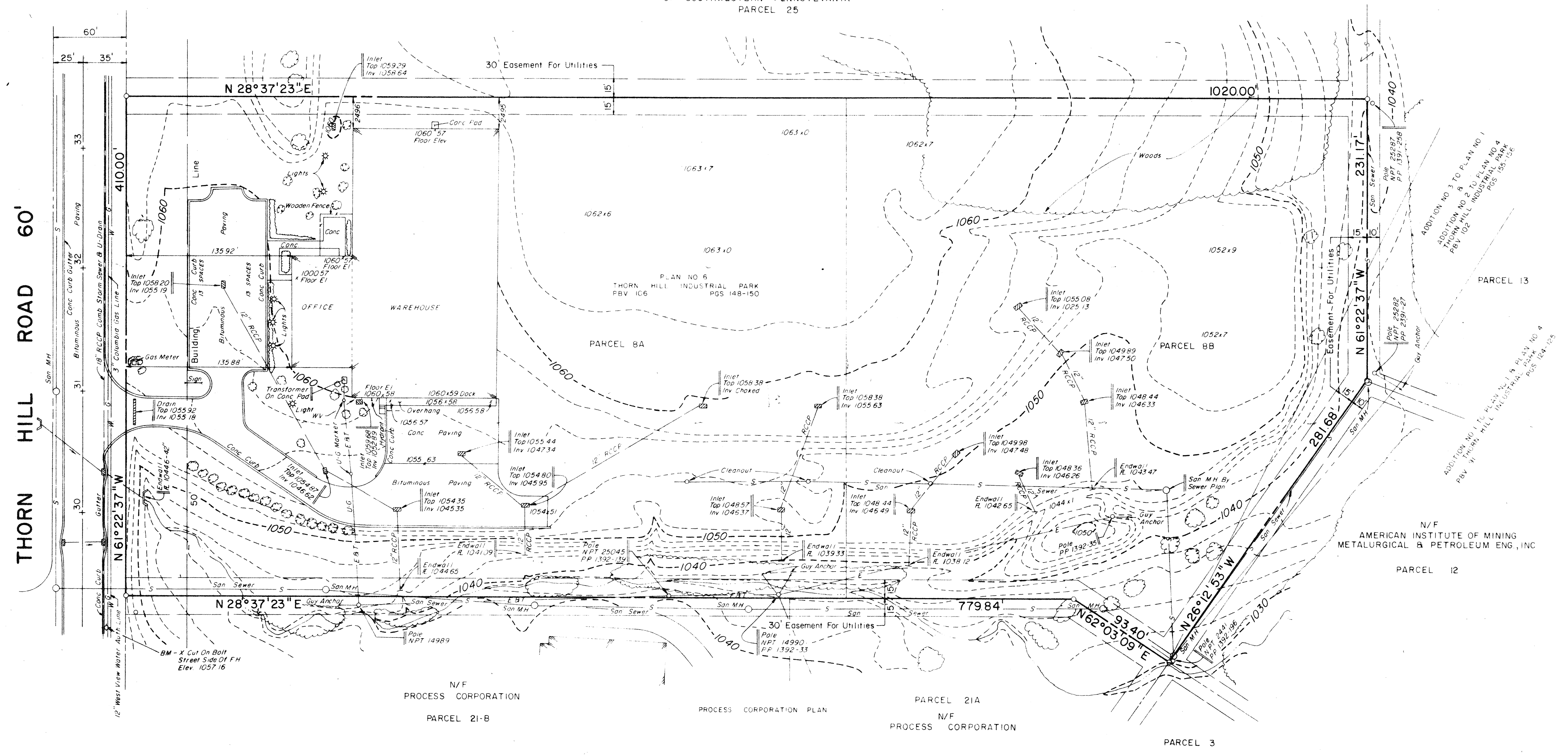


N/F
REGIONAL INDUSTRIAL DEVELOPMENT CORPORATION
OF SOUTHWESTERN PENNSYLVANIA
PARCEL 25



AREA PARCEL 8A = 242,670.80 SQ. FT. OR 5.571 ACRES
 AREA PARCEL 8B = 167,205.81 SQ. FT. OR 3.839 ACRES
 TOTAL AREA = 409,876.61 SQ. FT. OR 9.410 ACRES

- LEGEND**
- PP - Pennsylvania Power Co
 - NPT - North Pittsburgh Telephone Co
 - RCCP - Reinforced Cement Concrete Pipe
 - CMP - Corrugated Metal Pipe
 - MH - Manhole
 - FW - Fire Hydrant
 - T - Tree
 - WV - Water Valve

NOTE: Contours Are From Photogrammetric Mapping
By Eastern Mapping Company

**LENNON, SMITH, SOULERET
ENGINEERING INC.**
1822 Broadhead Rd., Allegheny, PA, 15001
412-378-3000

DWG. No. 0157-01-01
SHEET 1 OF 6

RECORD DRAWING

TOPOGRAPHIC SURVEY

SURVEYED FOR
BAXTER HEALTHCARE CORPORATION

SITUATE IN
MARSHALL TOWNSHIP, ALLEGHENY CO., PA

SCALE: 1"=50' SEPT 26, 1988

MACKIN ENGINEERING CO.
CONSULTING ENGINEERS
PITTSBURGH, PA

REV. 3-10-89