



1010 4th St SE
Canton, Ohio 44707

SQ FT AVAILABLE	10,000
LEASE RATE	\$4.50/SF/NNN
ACRES	1.05
YEAR BUILT	1952
ZONING	I2
OVERHEAD DOORS	4
CEILING HEIGHT	14' - 16'
TAXES	\$6,521.78/yr (\$0.39/SF)

Property Features

- 10,000 sq. ft. warehouse consisting of two connected buildings.
- Co-ray-vac heat, remodeled offices.
- Building 1: 5,000 sq. ft., has (2) 12' x 12' overhead doors on each end, two small offices that were recently remodeled and 14' high ceilings.
- Building 2: 5,000 sq. ft., has (2) 12'w x 14'h overhead doors, large mezzanine area, and 16' high ceilings.

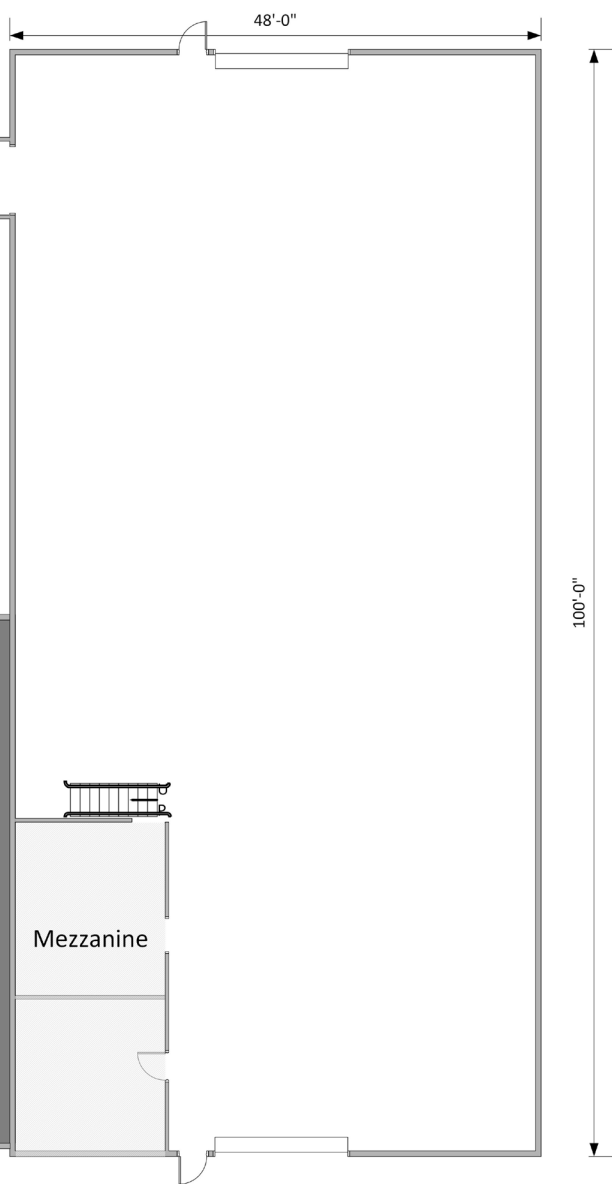
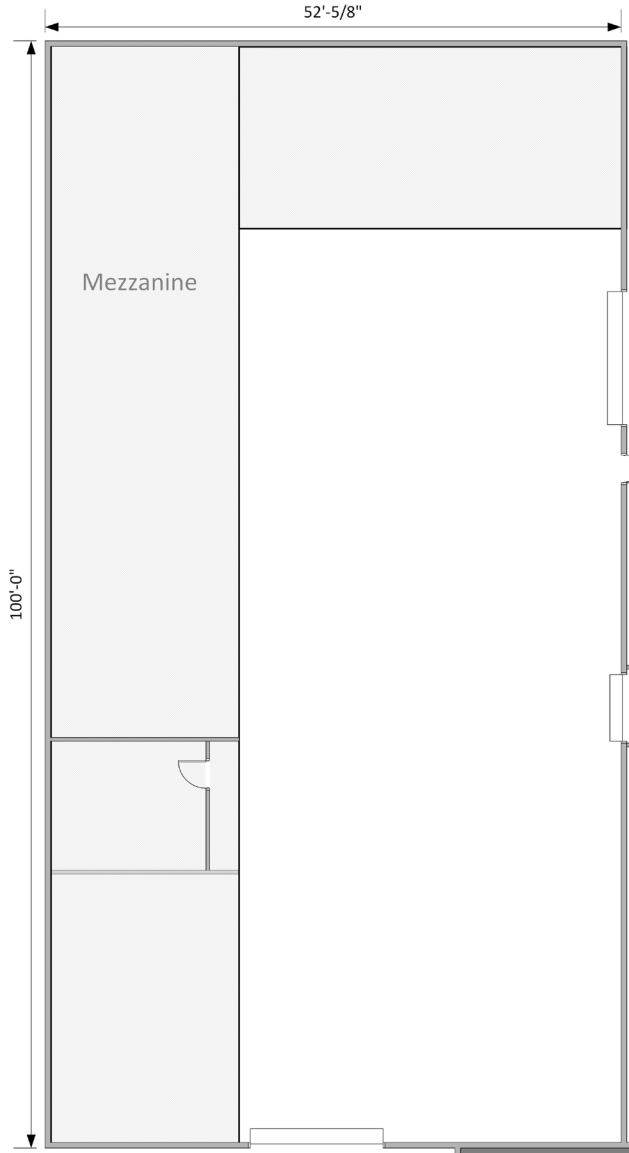
Dan Spring, SIOR

P 330 497 6249
dan@naispring.com

Kelly Sober

P 330 497 9837
kelly@naispring.com

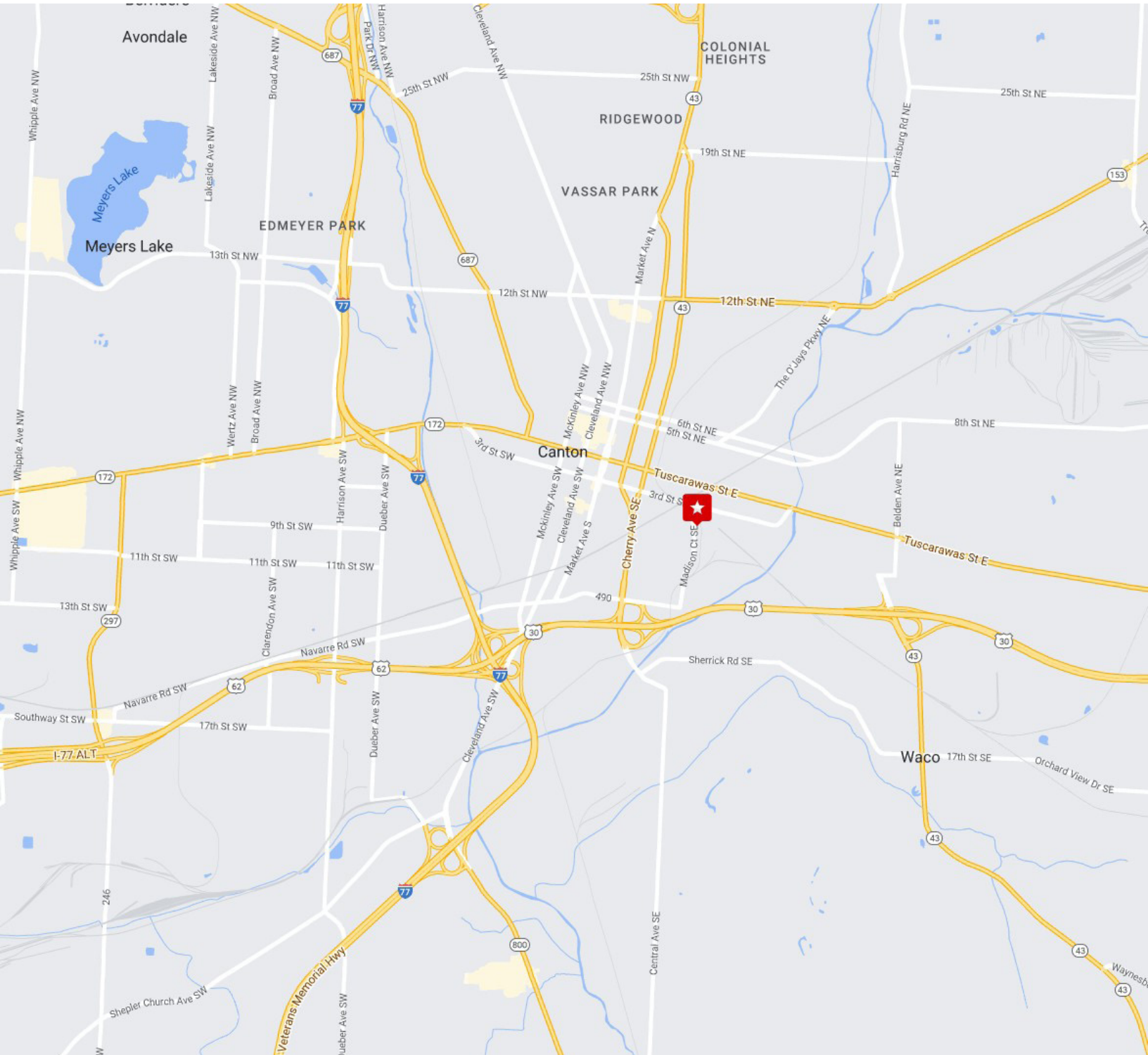
1010 4th St SE
Canton, Ohio 44707



NO WARRANTY OR REPRESENTATION, EXPRESS OR IMPLIED, IS MADE AS TO THE ACCURACY OF THE INFORMATION CONTAINED HEREIN, AND THE SAME IS SUBMITTED SUBJECT TO ERRORS, OMISSIONS, CHANGE OF PRICE, RENTAL OR OTHER CONDITIONS, PRIOR SALE, LEASE OR FINANCING, OR WITHDRAWAL WITHOUT NOTICE, AND OF ANY SPECIAL LISTING CONDITIONS IMPOSED BY OUR PRINCIPALS NO WARRANTIES OR REPRESENTATIONS ARE MADE AS TO THE CONDITION OF THE PROPERTY OR ANY HAZARDS CONTAINED THEREIN ARE ANY TO BE IMPLIED.

8234 Pittsburg Ave NW
North Canton, OH 44720
+1 330 966 8800
naispring.com

1010 4th St SE
Canton, Ohio 44707



NO WARRANTY OR REPRESENTATION, EXPRESS OR IMPLIED, IS MADE AS TO THE ACCURACY OF THE INFORMATION CONTAINED HEREIN, AND THE SAME IS SUBMITTED SUBJECT TO ERRORS, OMISSIONS, CHANGE OF PRICE, RENTAL OR OTHER CONDITIONS, PRIOR SALE, LEASE OR FINANCING, OR WITHDRAWAL WITHOUT NOTICE, AND OF ANY SPECIAL LISTING CONDITIONS IMPOSED BY OUR PRINCIPALS NO WARRANTIES OR REPRESENTATIONS ARE MADE AS TO THE CONDITION OF THE PROPERTY OR ANY HAZARDS CONTAINED THEREIN ARE ANY TO BE IMPLIED.

8234 Pittsburg Ave NW
North Canton, OH 44720
+1 330 966 8800
naispring.com