

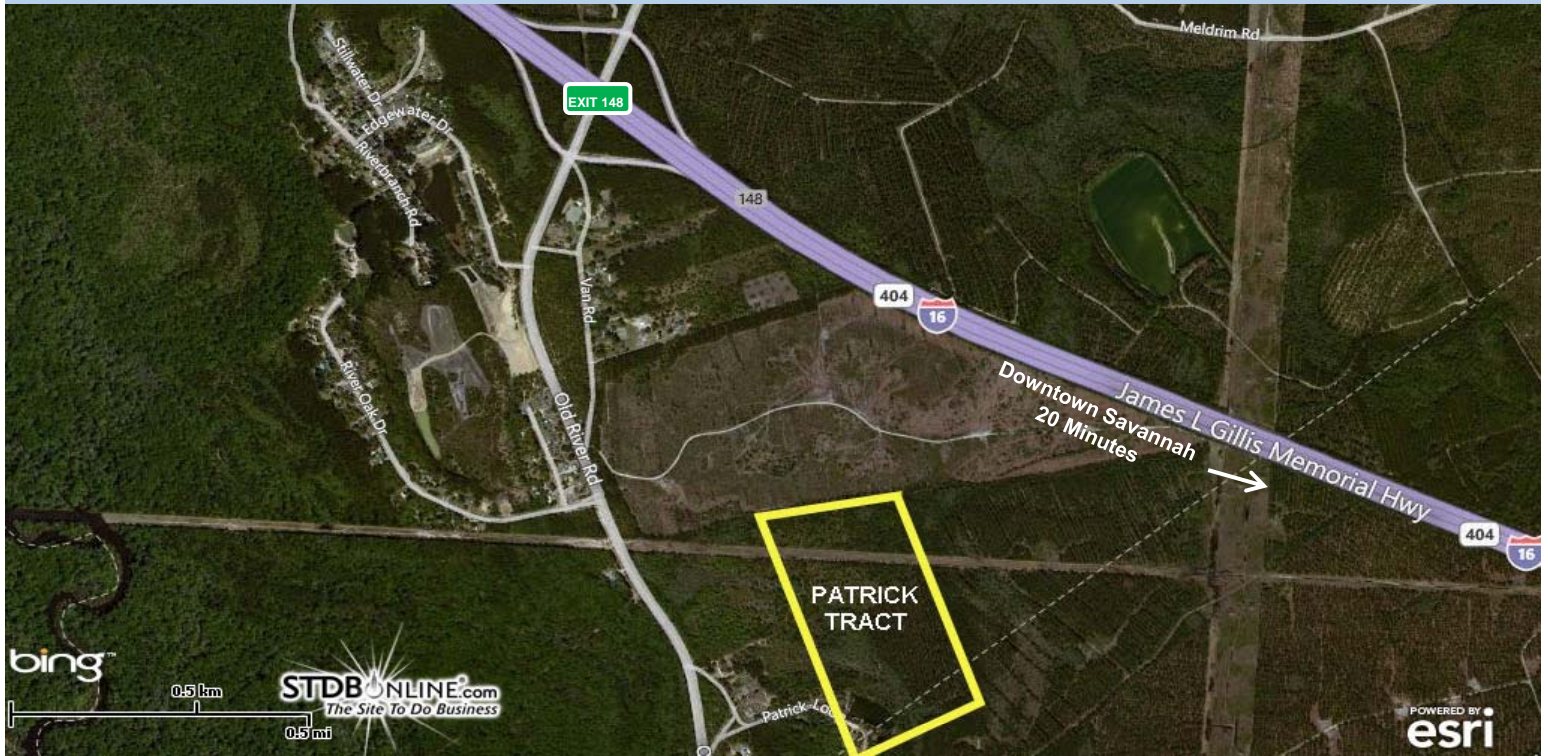


88-Acre Fill Dirt / Future Development Tract

Old River Road & Interstate 16
Effingham County, GA

LAND FOR SALE

EXCELLENT FILL DIRT POTENTIAL



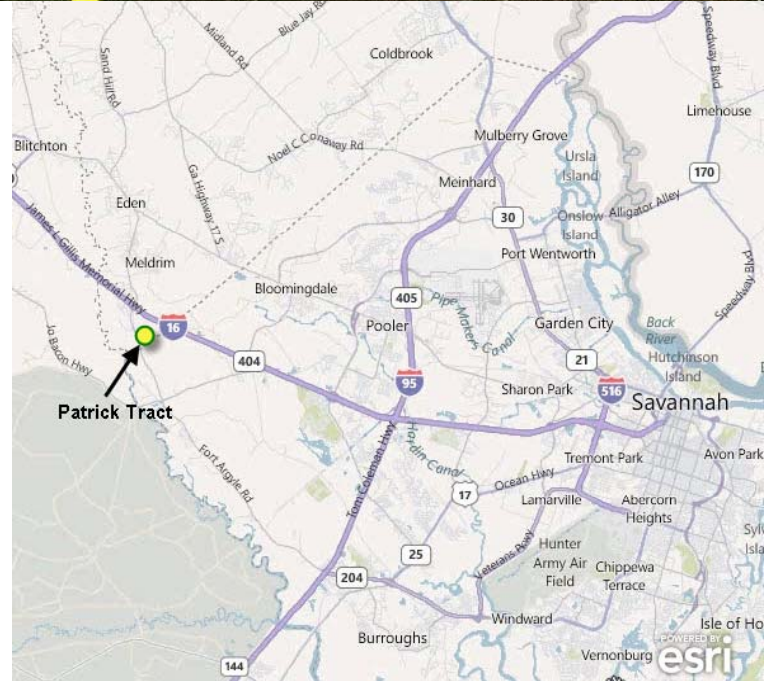
LOCATION Northeast side of Old River Road in Southwest Effingham County

TRACT SIZE 88 Acres

LIST PRICE \$750,000

FEATURES

- Immediate access to Interstate 16, one exit west of the future Jimmy DeLoach Parkway extension (Little Neck Road)
- Excellent potential for excavation of a significant amount of fill-dirt
- Adjacent to Effingham County Industrial Development Authority 's Interstate 16 Industrial Park
- Location and proximity to Savannah and major employers provide for excellent future development potential with ability to excavate dirt while creating future lake amenity for residential development



FOR MORE INFORMATION, PLEASE CONTACT:

Harvey Gilbert, CRE, MAI
Managing Partner & Broker-in-Charge
(912) 547-4012
hgilbert@gilbertezelle.com

Stephen Ezelle, CCIM
Partner
(912) 441-3083
sezelle@gilbertezelle.com

GILBERT & EZELLE REAL ESTATE SERVICES, LLC
104 West State Street, Suite 220
Savannah, Georgia 31401
(912) 236-8992
www.gilbertezelle.com

The depiction in the included photograph of any person, entity, sign, logo or property, other than Gilbert & Ezelle's (G&E) client and the property offered by G&E is incidental only, and is not intended to connote any affiliation, connection, association, sponsorship or approval by or between that which is incidentally depicted and G&E or its client.

This listing shall not be deemed an offer to lease, sublease or sell such property; and, in the event of any transaction for such property, no commission shall be earned by or payable to any cooperating broker except if otherwise provided pursuant to the express terms, rates and conditions of G&E's agreement with its principal, if, as and when such commission (if any) is actually received from such principal. (A copy of the rates and conditions referred to above with respect to this property is available upon request.)

