



960 International Parkway

960 International Pky, Lake Mary, FL 32746

Premier

Sotheby's
INTERNATIONAL REALTY



Mel Bernstein

Premier Sotheby's International Realty - Lake Mary
1117 International Dr, Suite 1711, Lake Mary, FL 32746
mel@luxurioushomes.com
(407) 810-4726



960 International Parkway

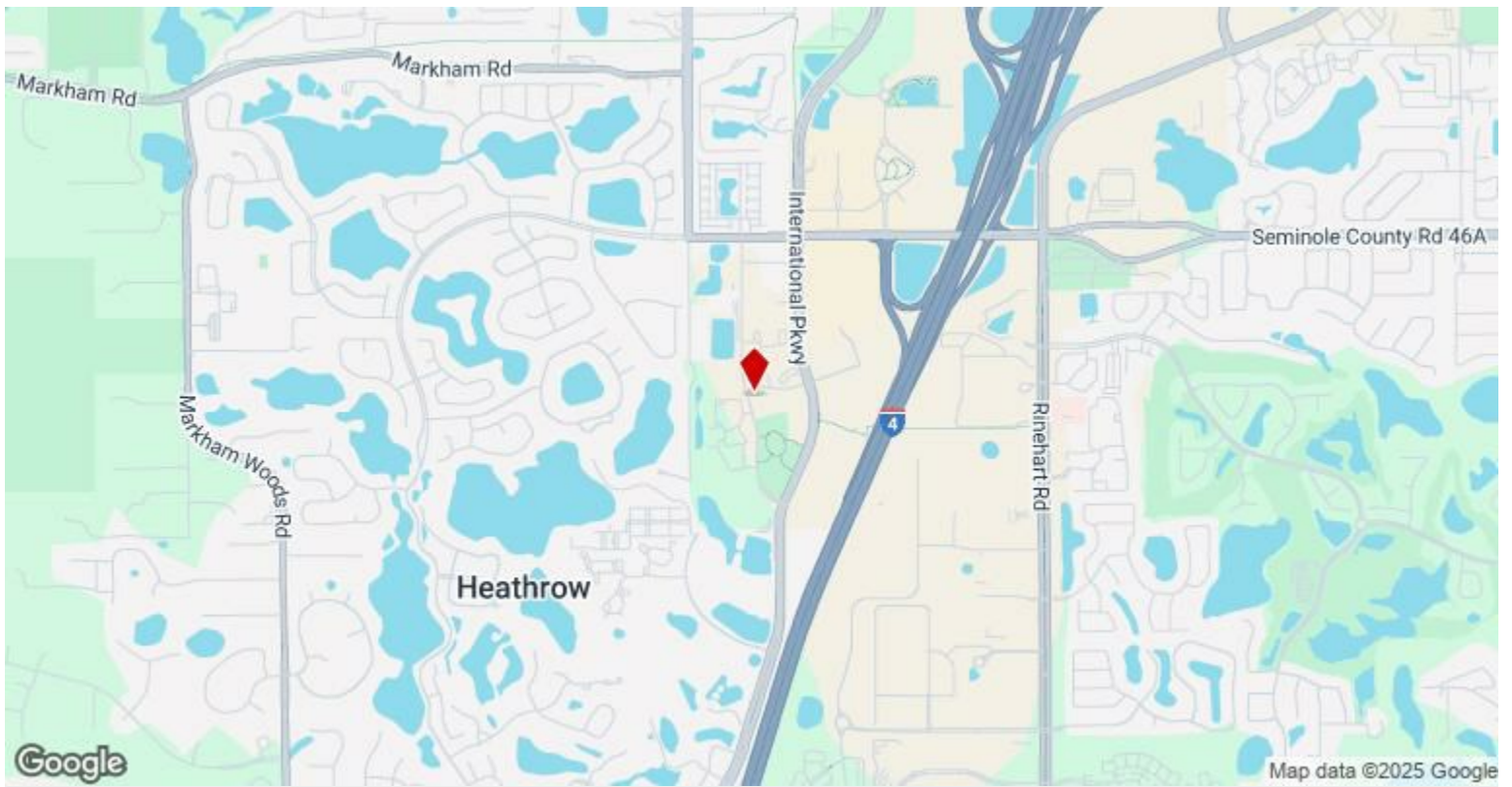
~~\$2,300,000~~ \$1,995,000

Currently divided into two suites, this property is income-producing. The largest suite is about 3,900 square feet, configured with a reception room, multiple offices and showrooms, private space, and a storage room with direct exterior access. The tenant space is an open approximately 1,100-square-foot suite with private exterior access and a restroom. Both suites enjoy floor-to-ceiling windows, abundant light and tall ceilings. Private electric car charging station onsite....

- International Parkway has a daily traffic count of 21,226.
- The property includes a private electric car charging station onsite
- Both suites receive abundant natural light from floor-to-ceiling windows

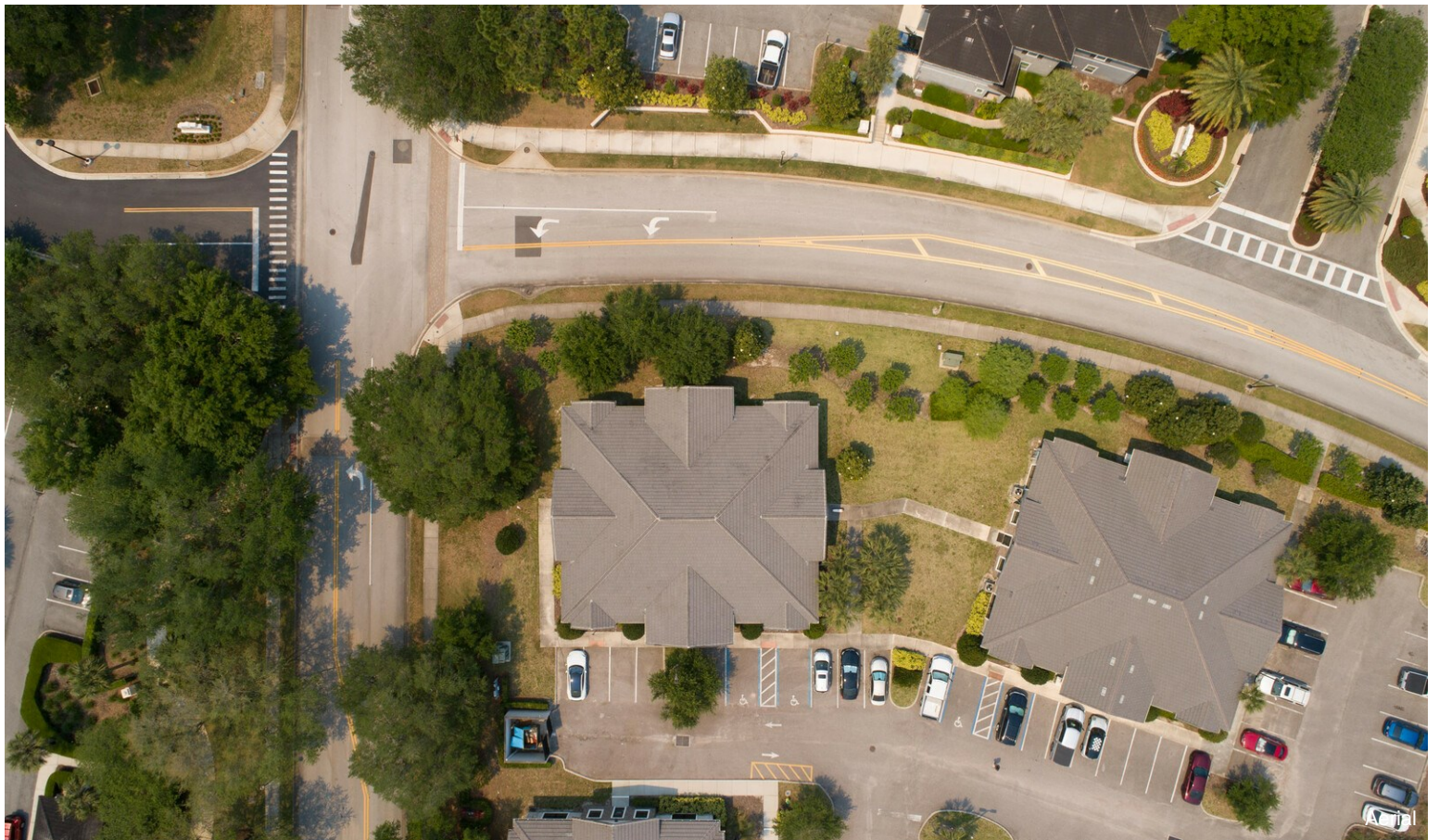


Price:	\$2,300,000
Property Type:	Office
Property Subtype:	Medical
Building Class:	B
Sale Type:	Owner User
Lot Size:	0.14 AC
Gross Building Area:	4,995 SF
Rentable Building Area:	4,995 SF
Sale Conditions:	1031 Exchange
No. Stories:	1
Year Built:	2017
Tenancy:	Multi
Parking Ratio:	2.2/1,000 SF
Zoning Description:	PUD
APN / Parcel ID:	06-20-30-300-007S-0000



960 International Pky, Lake Mary, FL 32746

Property Photos



Property Photos



Property Photos



Primar Space side view



Electric vehicle charger

Property Photos



Building Photo



Open space

Property Photos



Interior Photo



Office

Property Photos

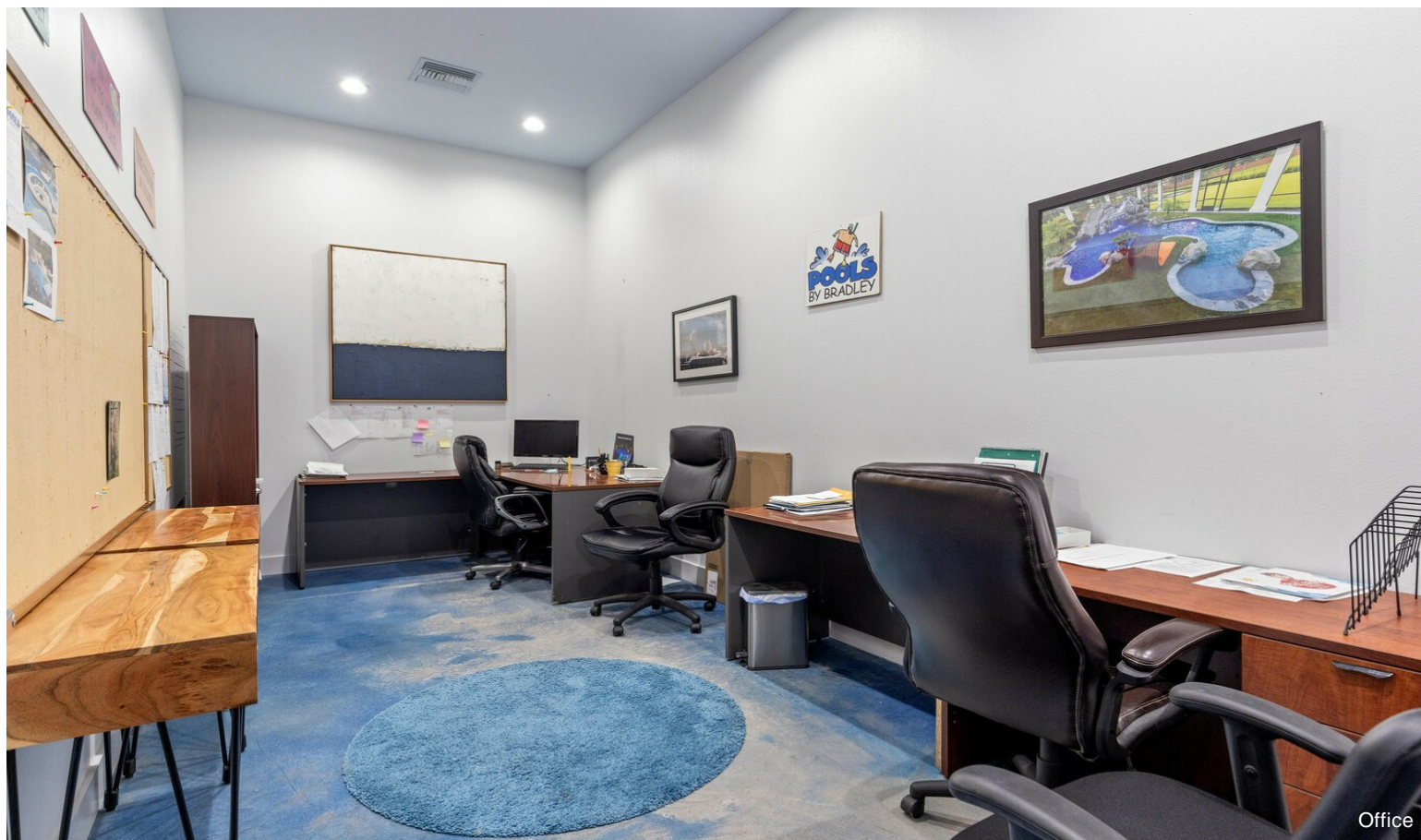


Office

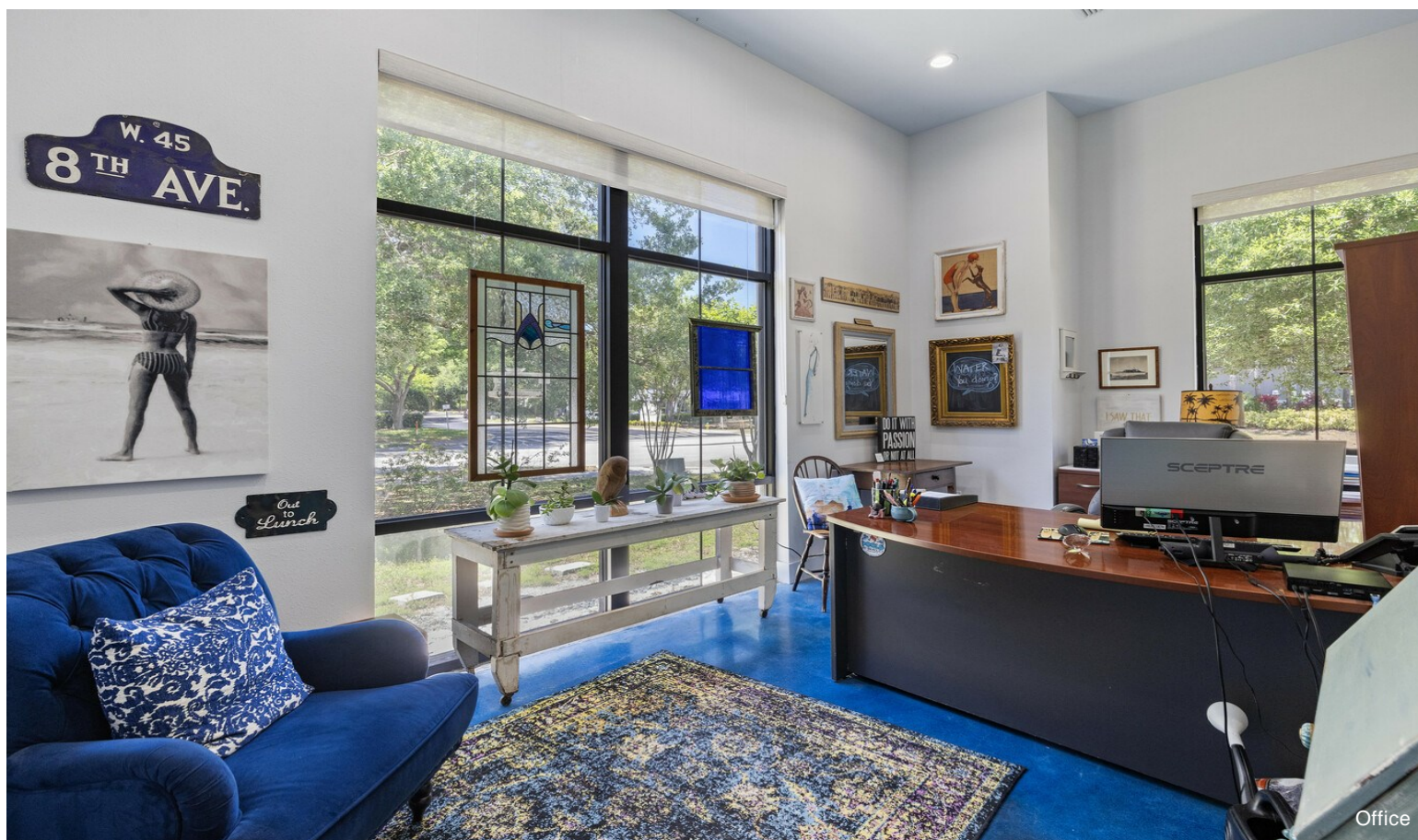


Interior Photo

Property Photos



Office



Office

Property Photos



Property Photos



Property Photos



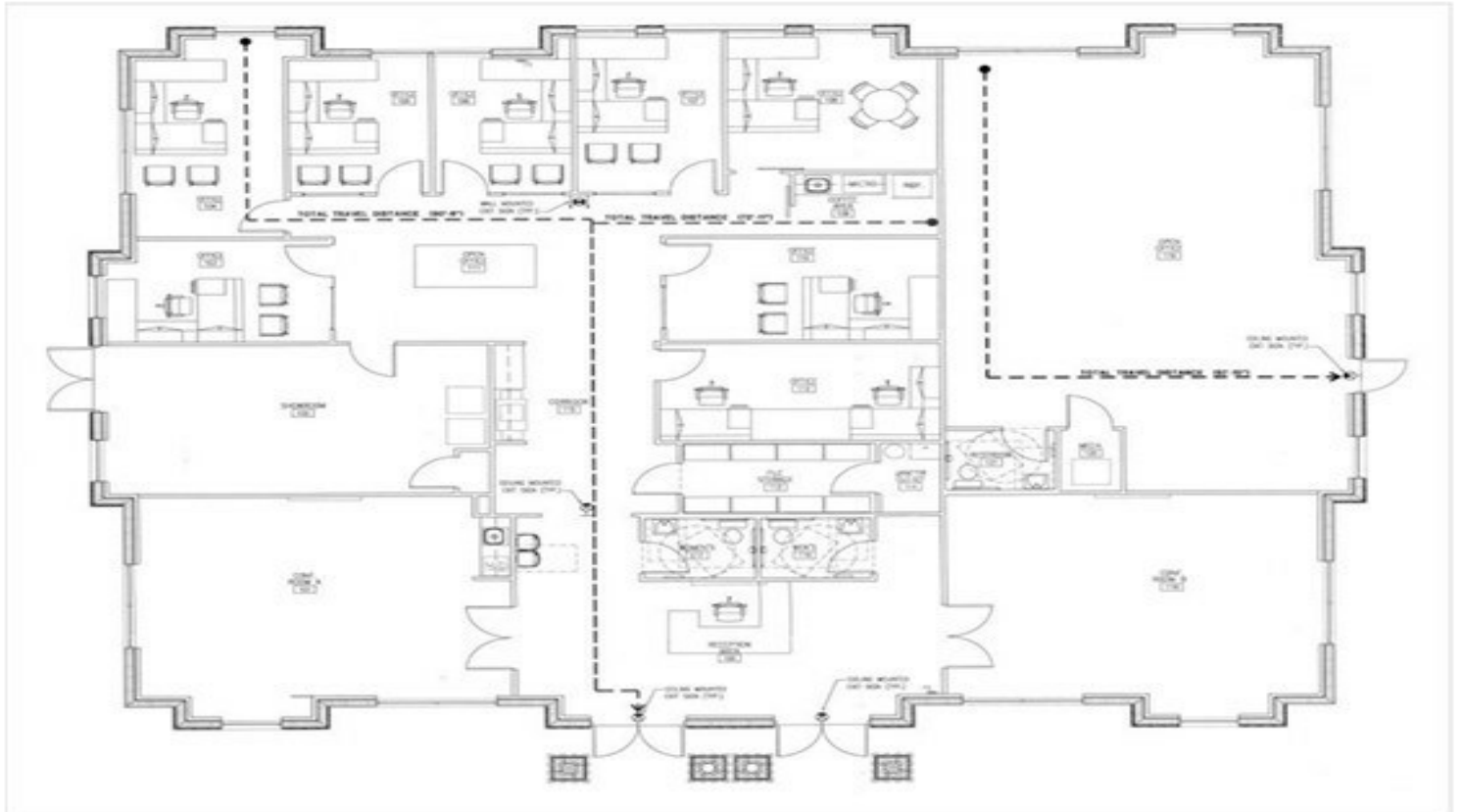
Property Photos



Property Photos



Tenant Space



960 Int'l Pkwy Floor Plan

Property Photos



Storage



OY4A7245-Enhanced-NR-4096x2732

Property Photos



060 International