



For Lease

 **51**  **101 - 2127 m²**

11-16 South Terrace, Adelaide

**FULLY REFURBISHED OFFICE SPACES WITH
UNSURPASSED PARKLAND VIEWS AND 51 ON-SITE CAR
PARKS**

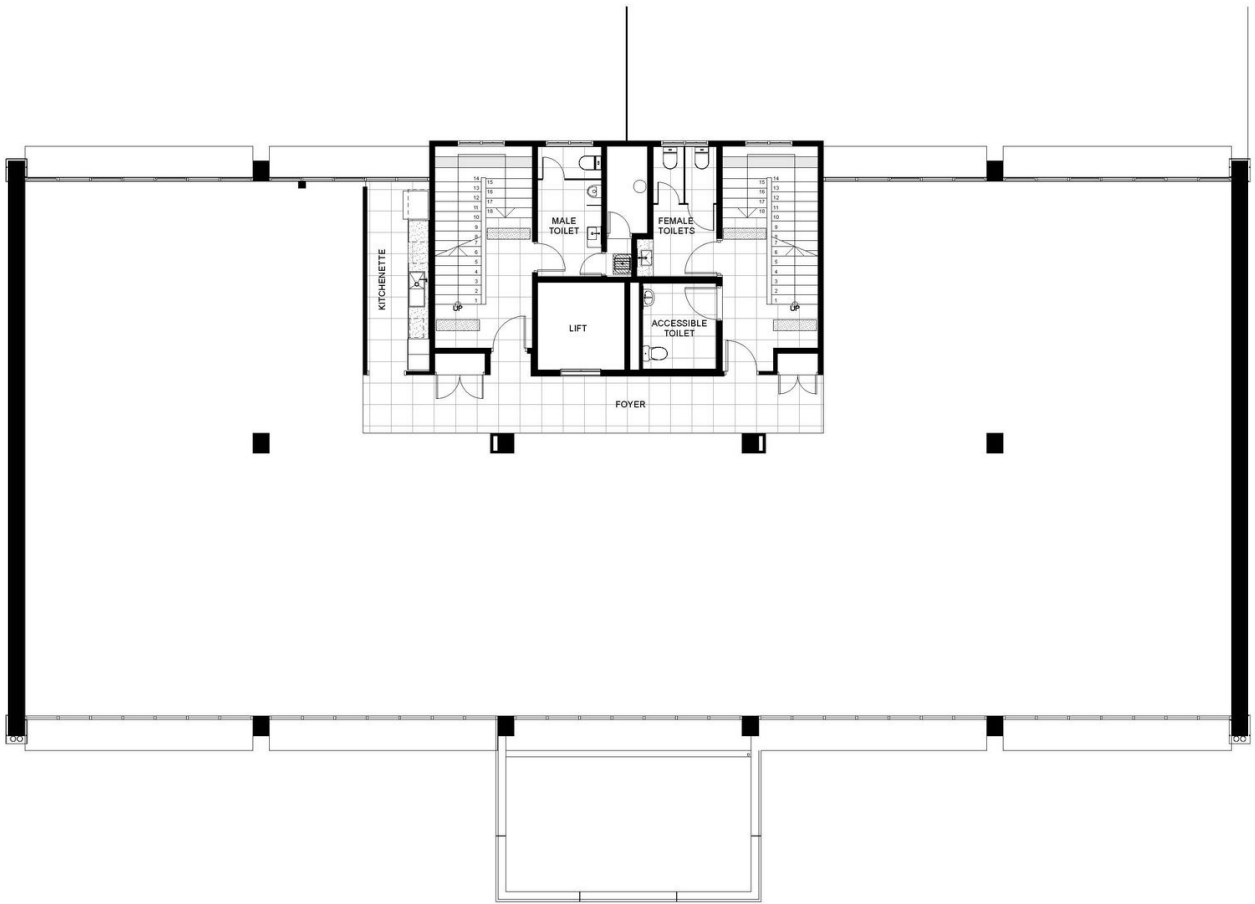
FULLY REFURBISHED OFFICE SPACES WITH UNSURPASSED PARKLAND VIEWS AND
51 ON-SITE CAR PARKS

- * Ideally located on South Terrace adjoining the South Parklands
- * Ground Floor Areas of 186 & 201 sqm
- * Whole Floors of 447.8 sqm
- * Lower Ground Areas of 101-194 sqm also available

For Lease: Contact for price



Nic Jordan
0416 217 219
info@rvjordan.com.au



LEVEL 1 FLOOR PLAN

