



UNIQUE OPPORTUNITY IN SUNSET PARK

20,000 SQ. FT. MULTI-STORY LOFT BUILDING FOR SALE

IDEAL FOR USER OR INVESTOR

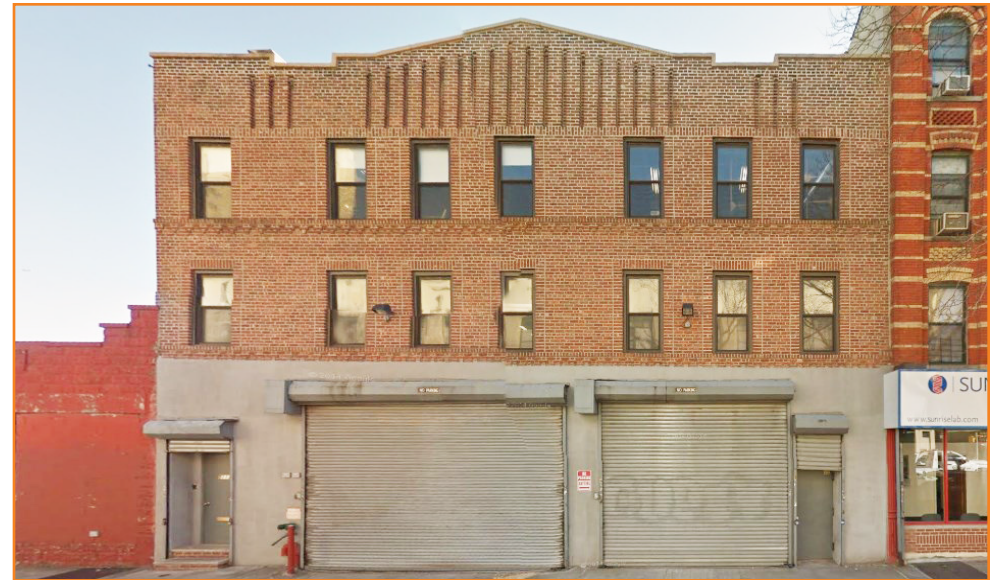
FEATURES:

- 3-Story Building + Full Usable Basement
- 20,000 Sq. Ft. (5,000 SF Per Floor)
- Freight Elevator
- Entire Building Fully Air Conditioned & Heated
- Fully Sprinklered
- 2 Loading Docks
- Ample Natural Light
- Short Walk to Subway

NEARBY:

- Brooklyn Queens Expressway
- Gowanus Expressway
- Belt Parkway

Transportation:



SALE PRICE:

UPON REQUEST

5113-5119 2ND AVE, BROOKLYN, NY

BLOCK: 797

LOT: 3

ZONING: M1-2D

For Information About This Property
Contact Exclusive Agents:

Mark Caso, Salesperson
mcaso@pinnaclereny.com
718-371-6419

Paul Bralower, Associate Broker
pbralower@pinnaclereny.com
718-371-6402

Brendan Burke, Salesperson
bburke@pinnaclereny.com
718-371-6403



PINNACLE REALTY

OF NEW YORK, LLC

www.pinnaclereny.com

46-34 11th Street • Long Island City, NY 11101

718-784-8282

