

**FREESTANDING OFFICE
BUILDING WITH RETAIL
EXPOSURE**



FOR LEASE

206 E Anapamu St, Santa Barbara, CA | Freestanding Office Building | 6,675 SF

Greg Bartholomew
805.898.4395
greg@hayescommercial.com
lic. 01131126

Francois DeJohn
805.898.4365
fran@hayescommercial.com
lic. 01144570

Steve Hayes
805.898.4370
steve@hayescommercial.com
lic. 00827640



222 E. Carrillo Street, Suite 101, Santa Barbara, California 93101 | HayesCommercial.com

Property Overview



This freestanding office building has been occupied by Northern Trust for 30 years. This high-identity property is well located on the southeast corner of Santa Barbara and Anapamu streets, across the street from the Santa Barbara County Courthouse. The space features windows throughout, onsite parking, and well-appointed interiors.

Term:	5 - 10 years
Size:	6,675 SF
Rate:	\$3.05 NNN (.55)
Available:	Now
Parking:	13 on-site spaces, including 1 handicap space
Restrooms:	Yes
HVAC:	Yes
Sprinklers:	No
Elevator:	No

Greg Bartholomew
805.898.4395
greg@hayescommercial.com
lic. 01131126

Francois DeJohn
805.898.4365
fran@hayescommercial.com
lic. 01144570

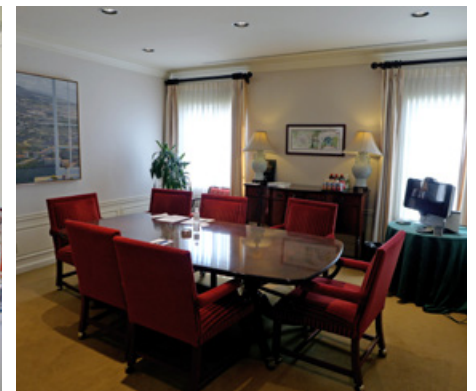
Steve Hayes
805.898.4370
steve@hayescommercial.com
lic. 00827640



FOR LEASE

206 E Anapamu St, Santa Barbara, CA | Freestanding Office Building | 6,675 SF

Photos



Greg Bartholomew
805.898.4395
greg@hayescommercial.com
lic. 01131126

Francois DeJohn
805.898.4365
fran@hayescommercial.com
lic. 01144570

Steve Hayes
805.898.4370
steve@hayescommercial.com
lic. 00827640

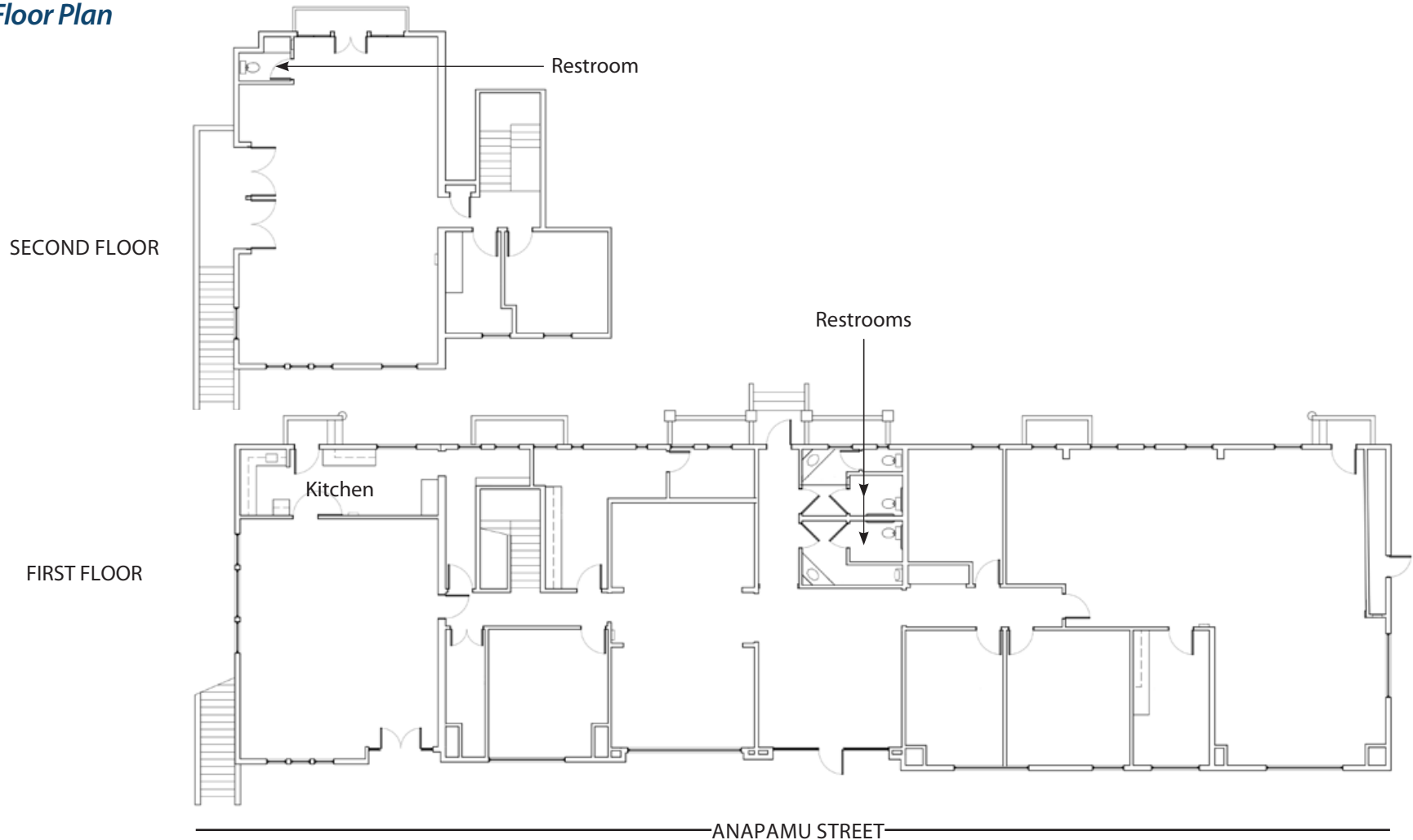


222 E. Carrillo Street, Suite 101, Santa Barbara, California 93101 | HayesCommercial.com

FOR LEASE

206 E Anapamu St, Santa Barbara, CA | Freestanding Office Building | 6,675 SF

Floor Plan



Greg Bartholomew
805.898.4395
greg@hayescommercial.com
lic. 01131126

Francois DeJohn
805.898.4365
fran@hayescommercial.com
lic. 01144570

Steve Hayes
805.898.4370
steve@hayescommercial.com
lic. 00827640



222 E. Carrillo Street, Suite 101, Santa Barbara, California 93101 | HayesCommercial.com