



NEWLY PAVED PARKING & LOADING SURFACE

71,000
SQUARE FEET
WAREHOUSE
FOR LEASE
IN BURLINGTON
COUNTY

AVAILABLE FOR LEASE

801 BRIDGEBORO ROAD

EDGEWATER PARK, NJ

Scott Mertz, SIOR
+1 856 802 6529
scott.mertz@naimertz.com

NAI Mertz
21 Roland Avenue | Mount Laurel, NJ 08054
+1 856 234 9600 | naimertz.com

NAIMertz
COMMERCIAL REAL ESTATE SERVICES, WORLDWIDE

AVAILABLE FOR LEASE

801 BRIDGEBORO ROAD

EDGEWATER PARK, NJ

71,000 SF WAREHOUSE BUILDING

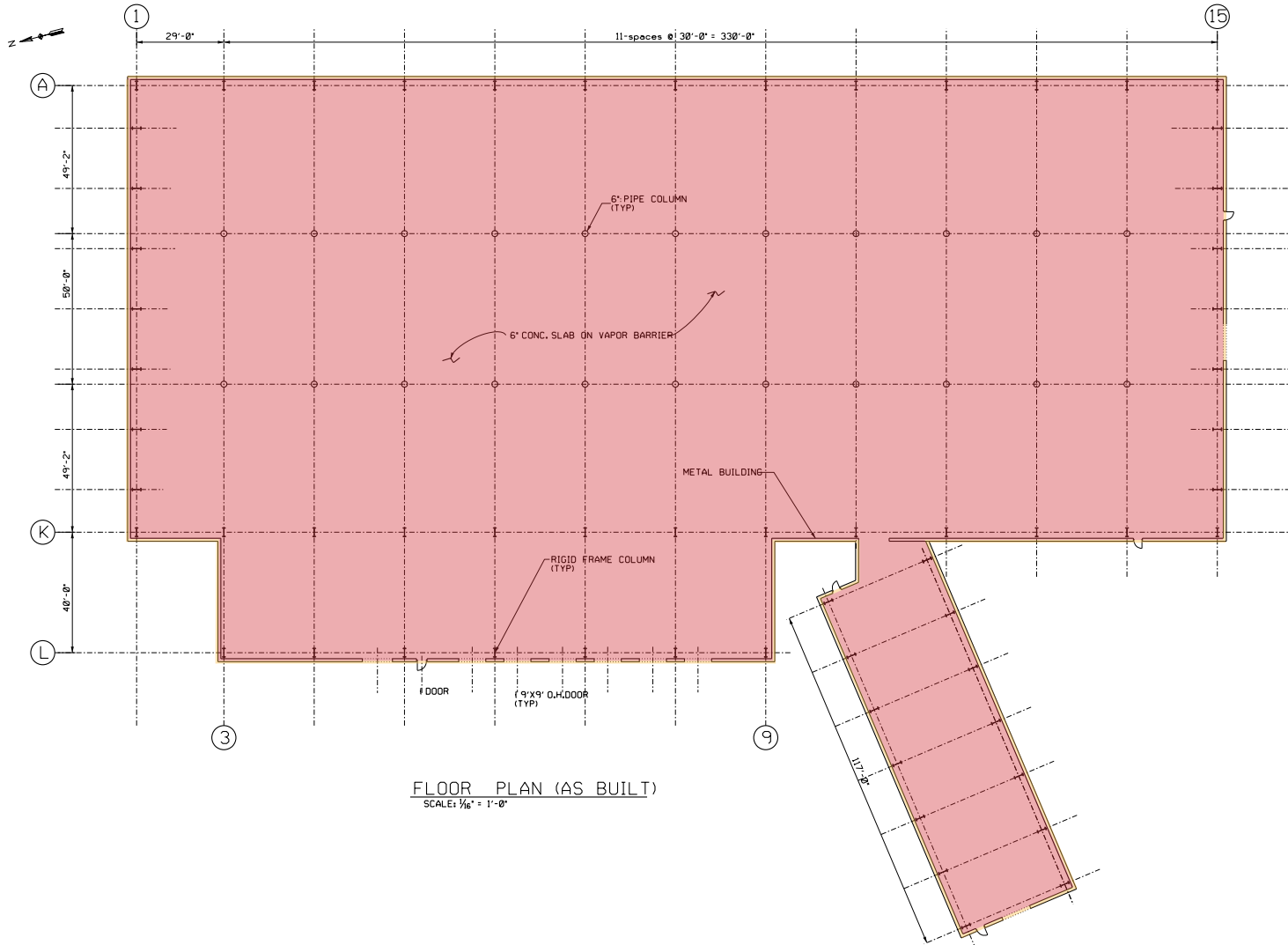
- (6) 9'7" x 10' tailgates w/ levelers
- (1) 12' x 14' drive-in
- Ceiling height: 18'9"-27'5"
- Column spacing: 30' x 40'
- Power: 200 amp, 3 Phase
- Dry sprinkler system
- Motion sensor LED lighting
- Propane heat
- Property is fenced-in
- Renovations completed, including exterior painting and resurfacing of loading wells and parking lot
- New office trailer w/ restroom on site
- Owner will build-to-suit internal office



AVAILABLE FOR LEASE

801 BRIDGEBORO ROAD

EDGEWATER PARK, NJ



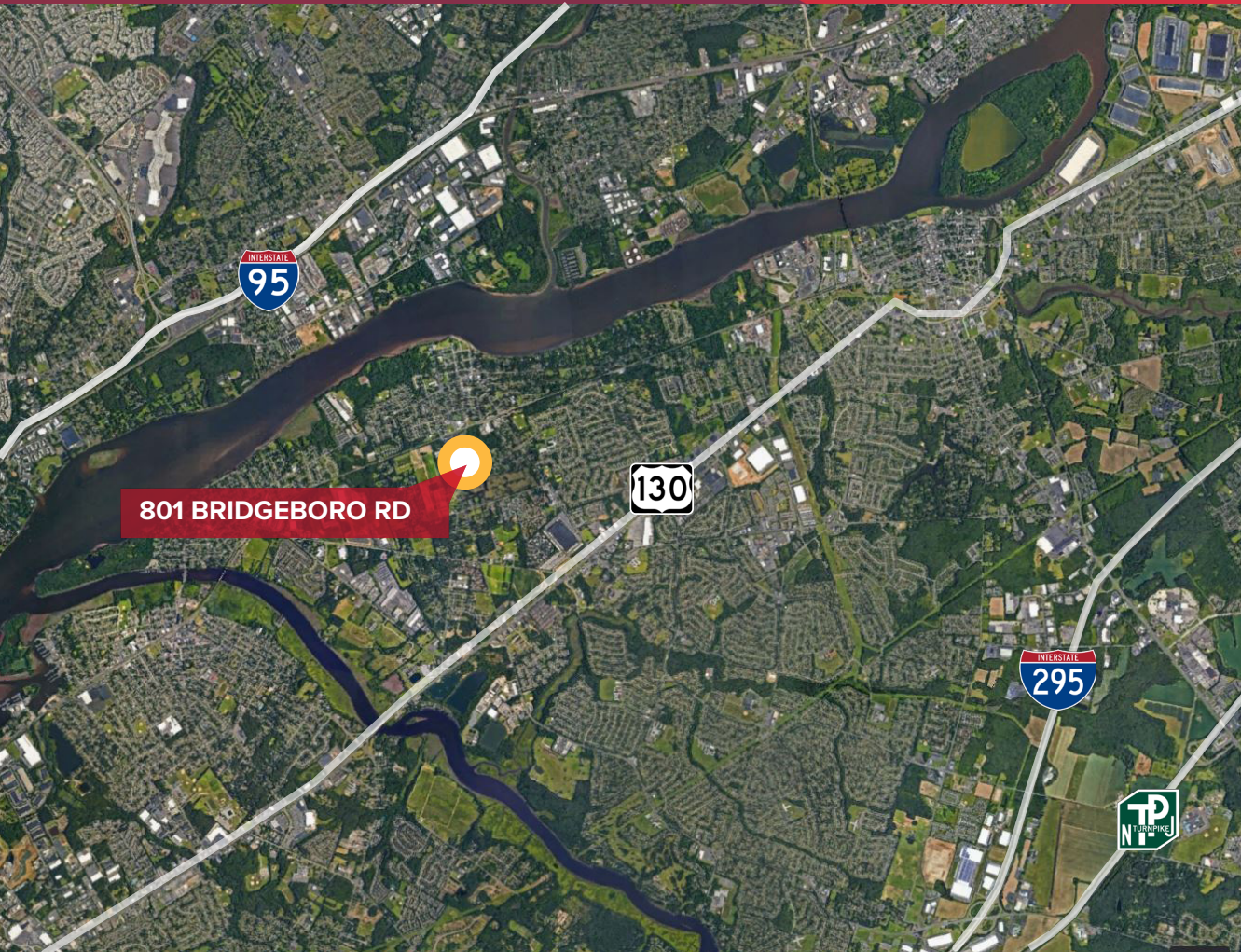
AVAILABLE FOR LEASE

801 BRIDGEBORO ROAD

EDGEWATER PARK, NJ



LOCATION INFORMATION



AVAILABLE FOR LEASE 801 BRIDGEBORO ROAD

EDGEWATER PARK, NJ

Distance to

Route 130	1.3 mi
Burlington Bristol Bridge	4.2 mi
I-295 (Exit 47)	5.6 mi
I-295 (Exit 45)	5.8 mi
I-95 / I-295 (PA)	7.4 mi
NJ Turnpike (Exit 5)	8.0 mi
PA Turnpike (Bristol)	8.4 mi

Scott Mertz, SIOR

+1 856 802 6529

scott.mertz@naimertz.com

NAI Mertz

21 Roland Avenue | Mount Laurel, NJ 08054

+1 856 234 9600 | naimertz.com

NO WARRANTY OR REPRESENTATION, EXPRESS OR IMPLIED, IS MADE AS TO THE ACCURACY OF THE INFORMATION CONTAINED HEREIN, AND THE SAME IS SUBMITTED SUBJECT TO ERRORS, OMISSIONS, CHANGE OF PRICE, RENTAL OR OTHER CONDITIONS, PRIOR SALE, LEASE OR FINANCING, OR WITHDRAWAL WITHOUT NOTICE, AND OF ANY SPECIAL LISTING CONDITIONS IMPOSED BY OUR PRINCIPALS NO WARRANTIES OR REPRESENTATIONS ARE MADE AS TO THE CONDITION OF THE PROPERTY OR ANY HAZARDS CONTAINED THEREIN ARE ANY TO BE IMPLIED.

NAI Mertz

COMMERCIAL REAL ESTATE SERVICES, WORLDWIDE