



## Property Highlights

- Two (2) pad sites ready for development
- Conveniently located off Main Street adjacent to Hannaford, Damariscotta Hardware, and Camden National Bank
- Prime location with easy access
- Just minutes from Downtown Damariscotta, Great Salt Bay Community School, Walgreens, Dunkin Donuts
- Contact broker for pricing

# Property Details

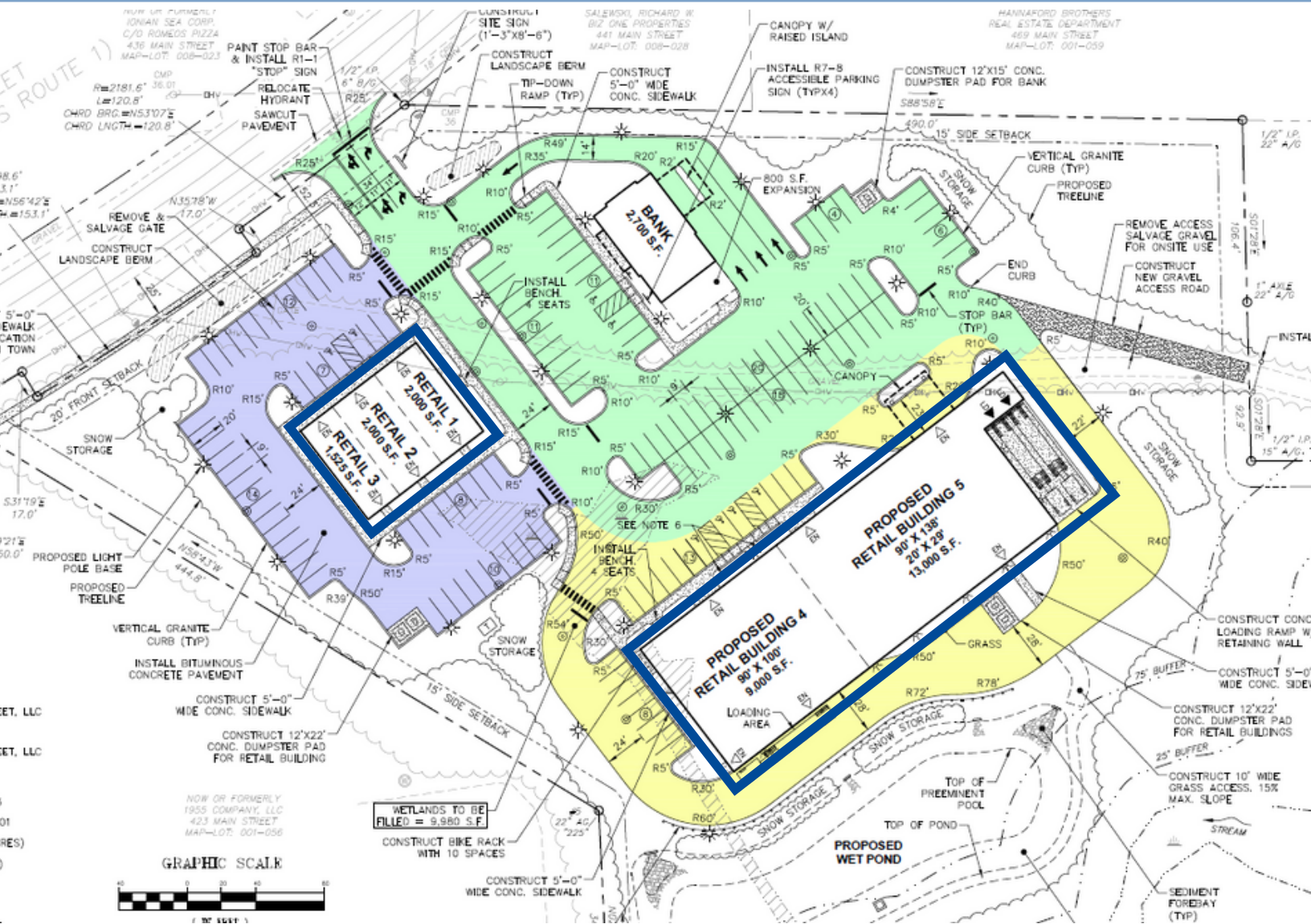
PORTA  
& CO.

435 Main Street | Damariscotta, Maine 04543

<b>Total SF Available</b>	27,525± SF
<b>Building Unit(s) #1-3</b>	Total: 5,525 SF
	Unit 1: 2,000 SF
	Unit 2: 2,000 SF
	Unit 3: 1,525 SF
<b>Building Unit(s) #4-5</b>	Total: 22,000 SF
	Unit 4: 9,000 SF
	Unit 5: 13,000 SF



<b>Availability</b>	Immediately
<b>Lease Rate</b>	Contact Broker for more information



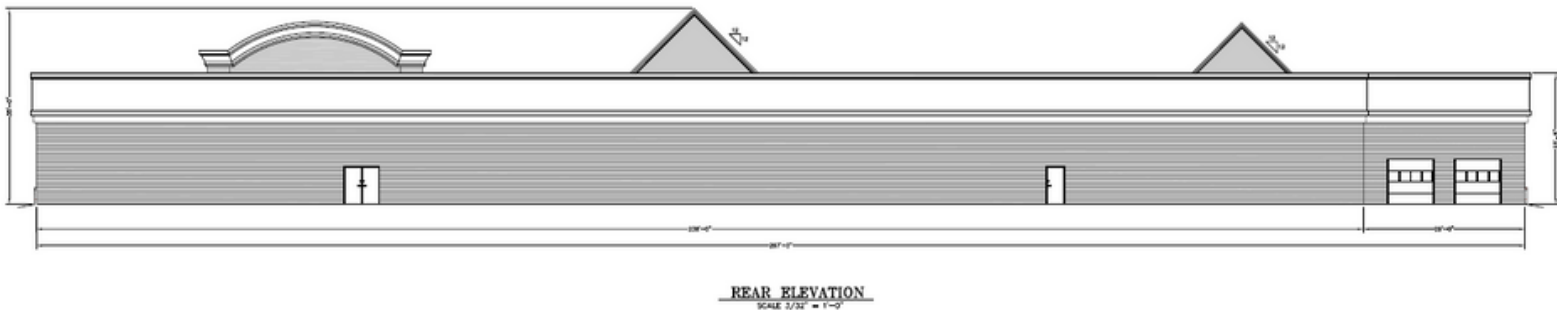
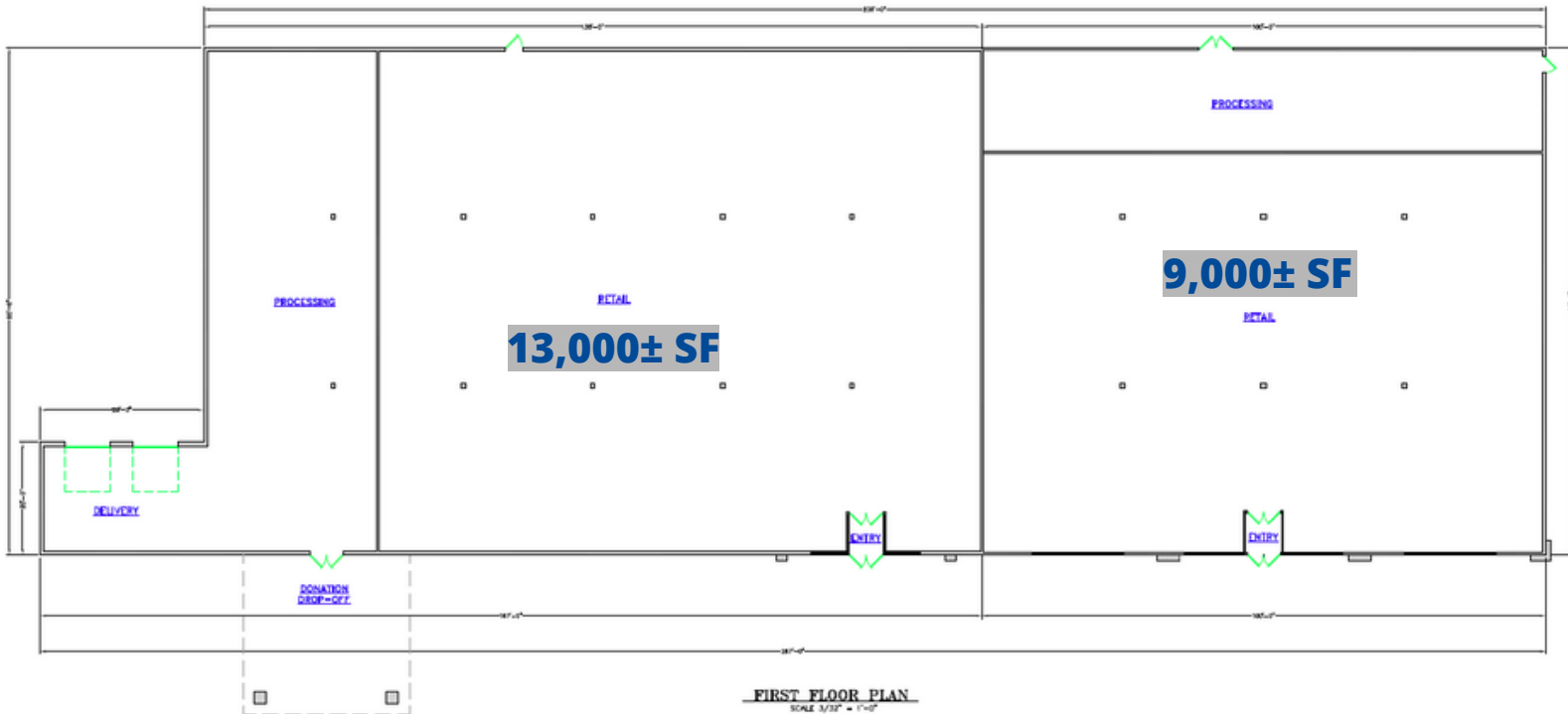
PORTA & CO. | 30 Milk Street, Second Floor | Portland, ME 04101 | (207)-747-1515

[www.portacompany.com](http://www.portacompany.com)

# Property Elevations

435 Main Street | Damariscotta, Maine 04543

PORTA  
& CO.



# Aerial

435 Main Street | Damariscotta, Maine 04543

PORTA  
& CO.



## CONTACT



**Tim Millett**

Broker

C: 207-713-6995

O: 207-558-0893

[tmillett@portacompany.com](mailto:tmillett@portacompany.com)

This information has been obtained from sources believed reliable and is intended for informational use only. The information contained herein has not been verified for accuracy or completeness. It is recommended that prospective tenants and buyers conduct their own inspection of the property and verify all information. Any reliance on this information is solely at your own risk. Photos herein are the property of their respective owners. Use of these images without the express written consent of the owner is prohibited.

**PORTA & CO.** | 30 Milk Street, Second Floor | Portland, ME 04101 | (207)-747-1515

[www.portacompany.com](http://www.portacompany.com)