



10 E. 9th Street Lawrence, Kansas

Lease Rate

\$2,300/mo, gross

Sale Price

\$2,285,000

Downtown Mixed-Use Opportunity

This mixed-use property was originally constructed in 1900 and is located on the corner of 9th and New Hampshire Streets in Downtown Lawrence.

- Building area: 14,278 SF
- Site area: 11,700 SF
- Zoning: CD-UC

Property Profile

Currently for sale or lease, 10 E. 9th Street represents a rare opportunity to own a piece of history in Downtown Lawrence. The property is located on the most developed corner in the district and features unique architecture and design elements. Well maintained, highly visible, and iconic - you don't want to miss this opportunity!

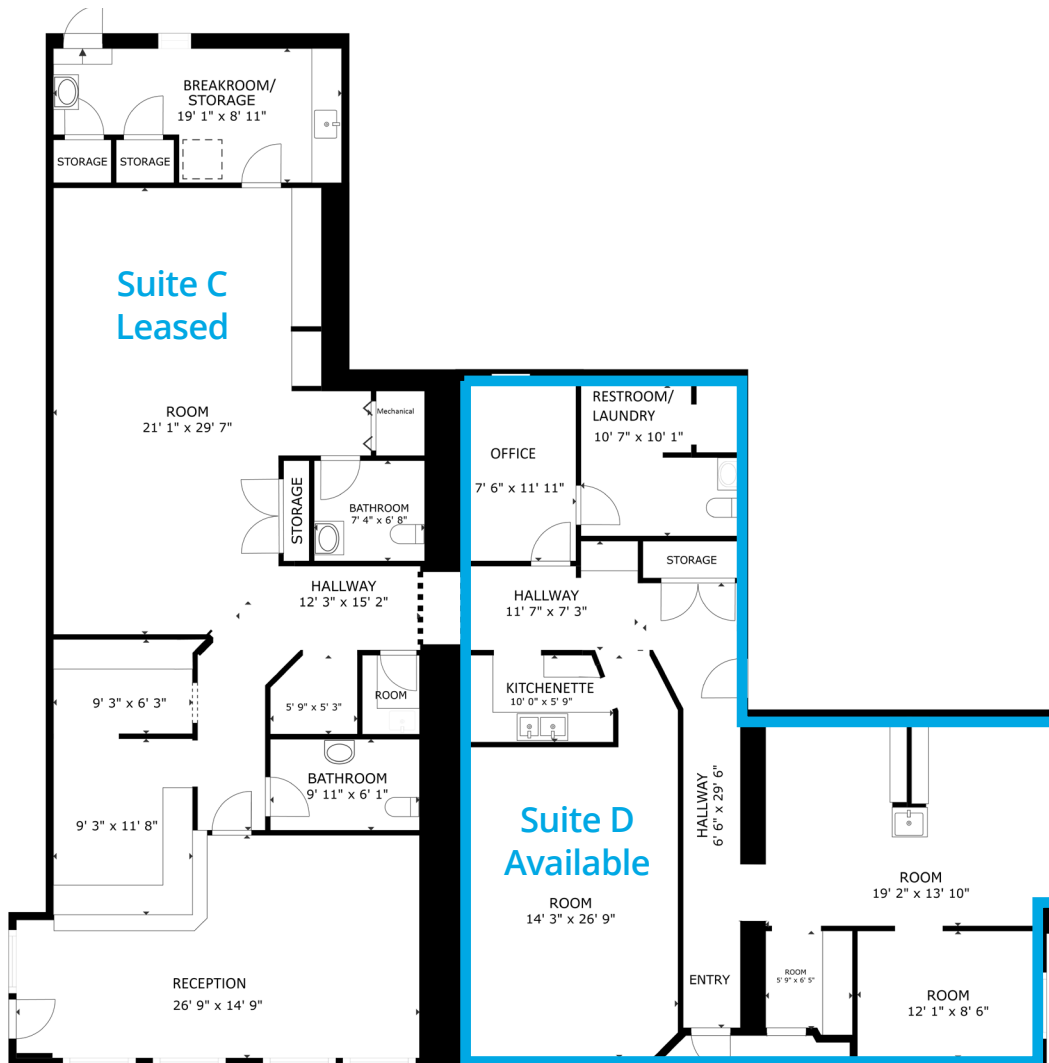


Available Space

Suite D

- 1,297 SF
- \$2,300/month, gross
- TI allowance for qualified tenant and term

Floor Plan





Site

Contact



J. Taylor
Senior Vice President
+1 785 766 9484
j.taylor@colliers.com



Colliers Lawrence
3705 Clinton Parkway, Suite 201
Lawrence, Kansas 66047
colliers.com/lawrence

This document has been prepared by Colliers for advertising and general information only. Colliers makes no guarantees, representations or warranties of any kind, expressed or implied, regarding the information including, but not limited to, warranties of content, accuracy and reliability. Any interested party should undertake their own inquiries as to the accuracy of the information. Colliers excludes unequivocally all inferred or implied terms, conditions and warranties arising out of this document and excludes all liability for loss and damages arising there from. This publication is the copyrighted property of Colliers and /or its licensor(s). © 2024. All rights reserved. This communication is not intended to cause or induce breach of an existing listing agreement.