

# Warehouse and Outdoor Storage

FOR SALE OR LEASE

11618 NACOGDOCHES RD  
SAN ANTONIO, TX 78217



±32,500 SF Warehouses and a 2,000 SF Office  
on a ±4 Acre Lot

partners

# Property Overview



Property Specs	Bldg 1 (Office)	Bldg 2 (Warehouse)	Bldg 3 (Warehouse)	Bldg 4 (Warehouse)
Square Feet	2,000	10,000	10,000	12,500
Construction Type	Cement Façade	Metal	Metal	Metal
Configuration (front/rear load)	-	Front Load	Front Load	Front Load
Clear Height	-	13' - 17' Min. - Clear Span	13' - 17' Min. - Clear Span	13' - 17' Min. - Clear Span
Grade Level Doors/Ramps	-	One (1) 20'x17'6" Slide Door, One (1) 10'x16' Slide Door - All Grade-level	Two (2) 20'x17'6" Slide Doors, Two (2) 10'x16' Slide Doors - All Grade-level	Four (4) 14'x16' and Two (2) 14'x14' Roll Up Doors - All Grade Level
Office Finish SF/%	2,000	1 Restroom	None	+/- 1,250 SF ; Two (2) Restrooms
Parking Spaces/Ratio	27 spaces	-	-	6 spaces
Fire Sprinklers	-	Yes	Yes	Yes
HVAC	Electric pad-mounted packaged system & split systems	(1) split system	N/A	Electric pad-mounted packaged system
Power	200 Amp	200 Amp 480V 3 Phase	1200 Amp 480V 3 Phase	200 Amp 480V 3 Phase
Roof	Pitched metal R-panels	Pitched metal R-panels	Pitched metal R-panels	Pitched metal R-panels
Electric	CPS Energy	CPS Energy	CPS Energy	CPS Energy
Water/Sewer	SAWS	SAWS	SAWS	SAWS
Gas	None	None	None	None

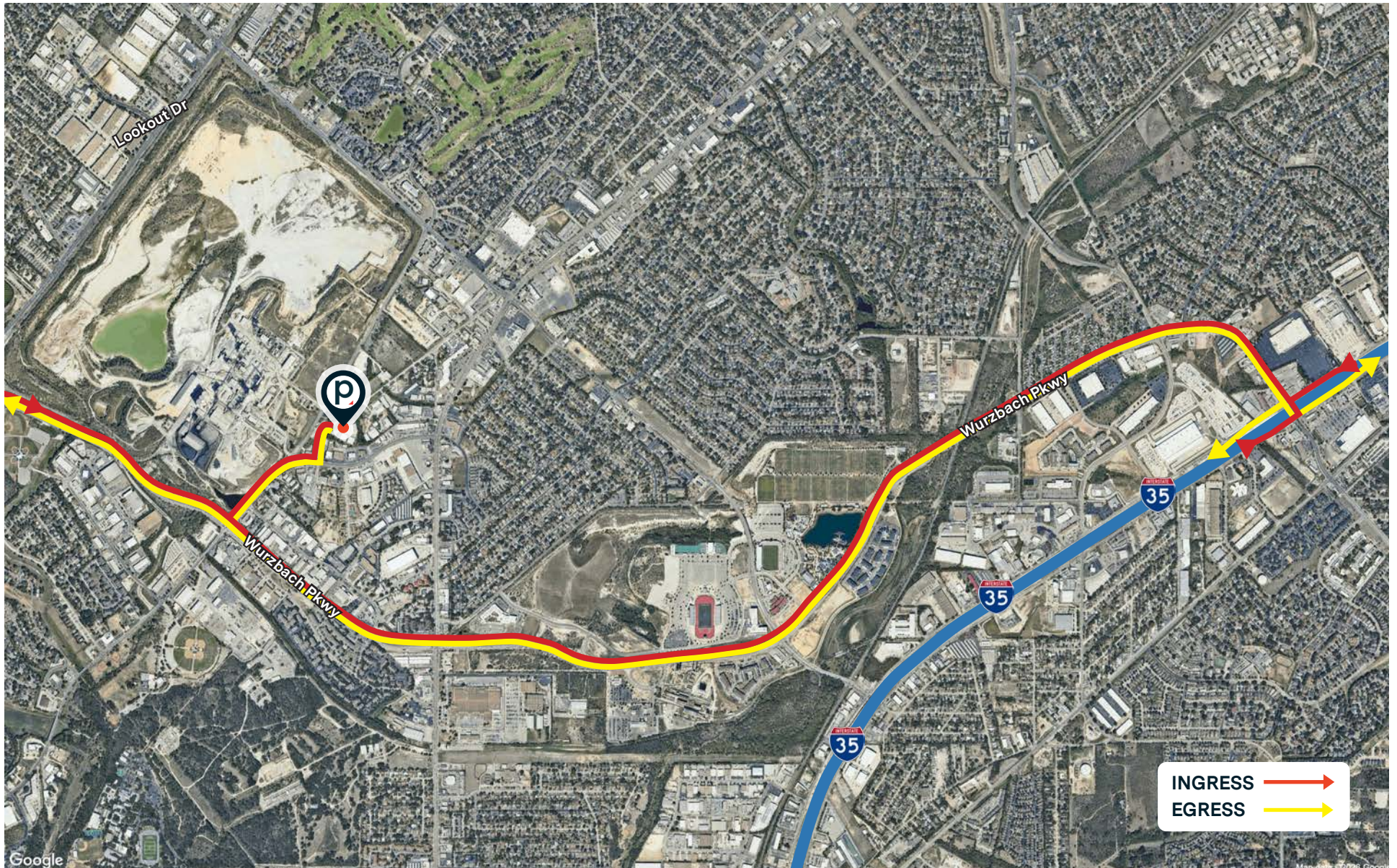
# Aerial Overview



# Building Photos



# Ingress & Egress



# Nearby Major Businesses



# San Antonio at a Glance



## WORKFORCE

- Positioned in Northeast San Antonio with access to a 1.3M+ person labor force within a 30-minute drive.
- Immediate connectivity to Loop 410, I-35, and I-10 provides regional employee access from Live Oak, Schertz, Universal City, and North Central San Antonio.
- Strong blue-collar and skilled trade base supported by Joint Base San Antonio, local technical colleges, and workforce development programs.
- Core labor sectors include logistics, warehousing, light manufacturing, construction trades, and healthcare support services.



## KEY INDUSTRIES

- Located within a proven industrial and distribution corridor serving the greater San Antonio MSA (population ~2.6M).
- Immediate access to I-35 NAFTA corridor, one of Texas' primary north-south freight routes connecting to Austin, Dallas, and Laredo.
- Dominant industries include Distribution & Logistics, Advanced Manufacturing, Aerospace & Defense, Construction Services, Automotive Services, and E-commerce Fulfillment.
- San Antonio's pro-business environment and lower occupancy costs relative to Austin support continued industrial demand.



## COMMUNITY DEMOGRAPHICS

- The surrounding area features steady population growth, strong household formation, and expanding suburban development throughout Northeast San Antonio and adjacent communities.
- The corridor benefits from consistent in-migration, military presence, and workforce-driven housing demand, supporting long-term economic stability.
- Median age in the area reflects a balanced working-age population, ideal for industrial employers and service businesses.
- Continued residential and commercial expansion in Live Oak, Schertz, Universal City, and north San Antonio strengthens long-term demand fundamentals.



## SAMPLE TOP EMPLOYERS

- Joint Base San Antonio (Military / Defense)
- Amazon (Fulfillment & Distribution – regional facilities)
- H-E-B Distribution & Corporate Operations
- Northeast Methodist Hospital (Healthcare)
- Rackspace Technology (Technology & Data Infrastructure)
- Toyota Motor Manufacturing Texas (Advanced Manufacturing)
- USAA (Financial Services – regional headquarters)

## DISTANCES

### MAJOR METROS

**Downtown San Antonio** 12 Mi

**Austin** 70 Mi

### PORTS

**Port of Houston** 207 Mi

**Port of Corpus Christi** 153 Mi

**Port of Galveston** 249 Mi

### AIRPORTS

**San Antonio International Airport** 5 Mi

**Austin International Airport** 72 Mi

## DEMOGRAPHICS

### POPULATION

	1 MILE	3 MILES	5 MILES
<b>2024 Population</b>	8,715	93,238	268,892
<b>2029 Population Projection</b>	9,207	98,538	285,001
<b>Median Age</b>	34.6	38.1	37.8

### HOUSEHOLDS

### EMPLOYMENT

\*Info provided by [San Antonio EDF](#), [San Antonio Gov](#), [TWC](#) & CoStar

# Our Team



**Stan Nowak, SIOR**

Partner

512 601 8120

stan.nowak@partnersrealestate.com



**Andrew Alizzi**

Vice President

512 647 1545

andrew.alizzi@partnersrealestate.com



**Colten Courtney**

Senior Associate

210 807 6552

colten.courtney@partnersrealestate.com

DISCLAIMER: This offering memorandum is for general information only. No information, forward-looking statements, or estimations presented herein represent any final determination on investment performance. While the information presented in this offering memorandum has been researched and is thought to be reasonable and accurate, any real estate investment is speculative in nature. Partners and/or their agents cannot and do not guarantee any rate of return or investment timeline based on the information presented herein.

By reading and reviewing the information contained in this offering memorandum, the user acknowledges and agrees that Partners and/or its agents do not assume and hereby disclaim any liability to any party for any loss or damage caused by the use of the information contained herein, or errors or omissions in the information contained in this offering memorandum, to make any investment decision, whether such errors or omissions result from negligence, accident or any other cause.

Investors are required to conduct their own investigations, analysis, due diligence, draw their own conclusions, and make their own decisions. Any areas concerning taxes or specific legal or technical questions should be referred to lawyers, accountants, consultants, brokers, or other professionals licensed, qualified or authorized to render such advice.

In no event shall Partners and/or its agents be liable to any party for any direct, indirect, special, incidental, or consequential damages of any kind whatsoever arising out of the use of this offering memorandum, or any information contained herein. Partners and/ or its agents specifically disclaim any guarantees, including, but not limited to, stated or implied potential profits, rates of return, or investment timelines discussed or referred to herein.