

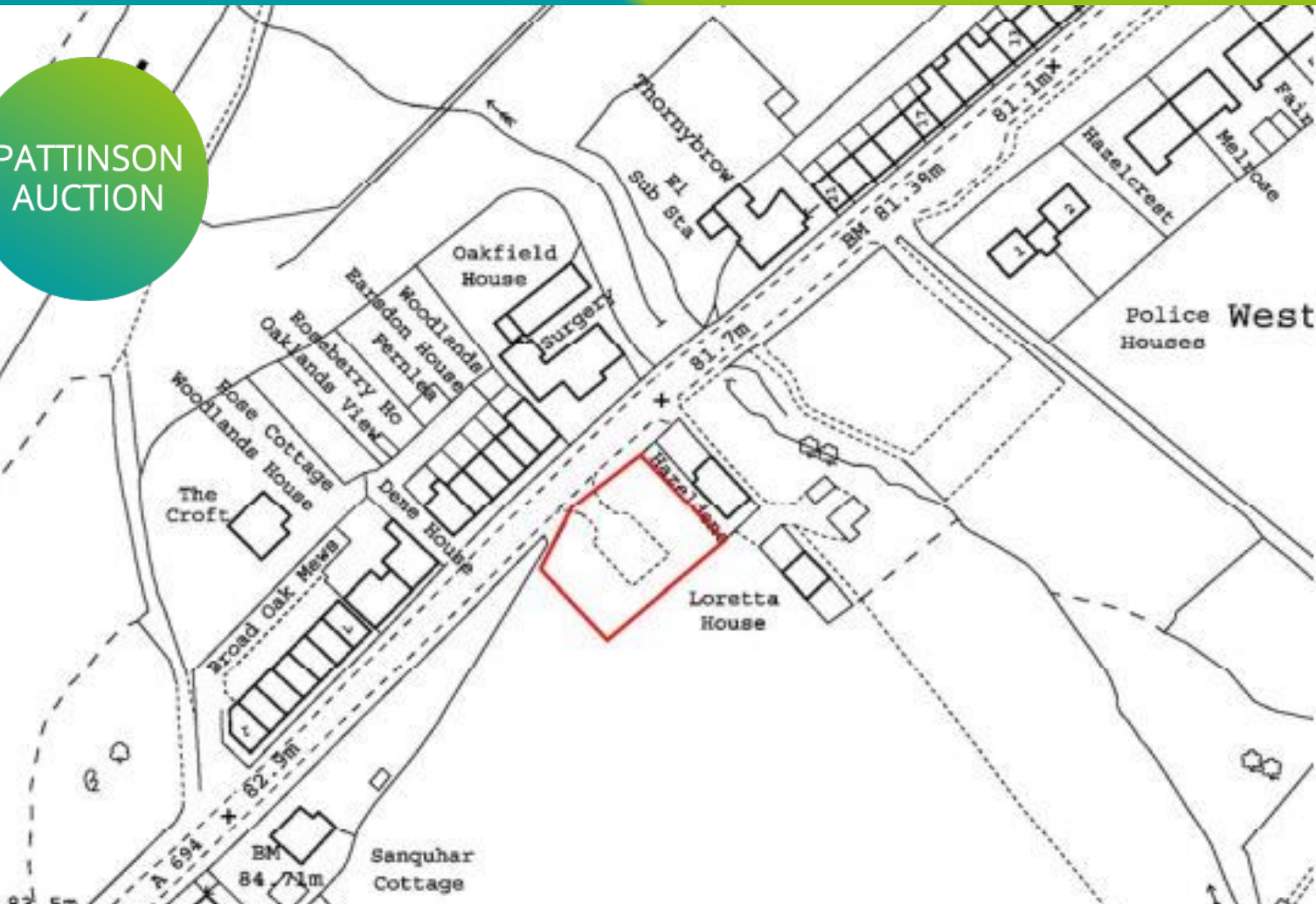
land & development in NE17

Summerfield Terrace, Low Westwood,
County Durham, NE17 7PP

£105,000 Starting Bid

- ✓ Land site
- ✓ 0.19ac (760sqm)
- ✓ Freehold title
- ✓ Lapsed planning permission
- ✓ Reference number
LO/1/2008/0483/DMFP

PATTINSON
AUCTION



Front Elevation



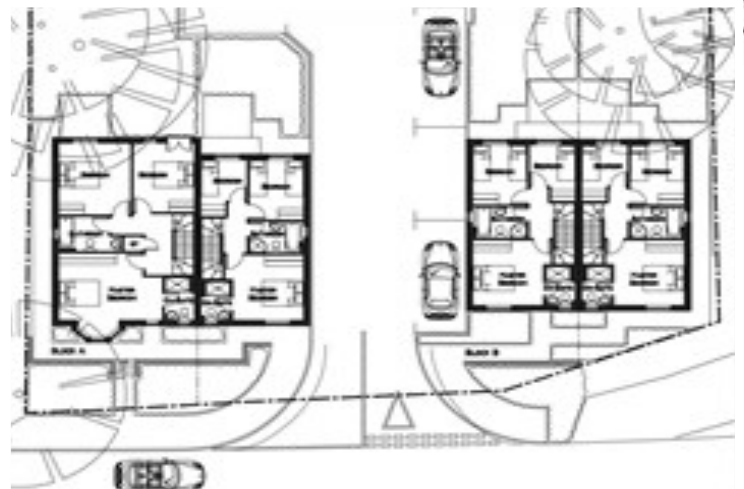
Rear Elevation



Side Elevation



Side Elevation



Summary

- Property Type: Land & Development - Parking: Allocated Price: £105,000

Description

FOR SALE BY AUCTION: auction to be held on 28th November 2017 at 5pm at Kingston Park Rugby Club.

We are pleased to offer to auction a 0.19ac site located on Summerfield Terrace, Low Westwood, Newcastle upon Tyne. The site was previously granted planning permission for the erection of four dwellings (which has now lapsed).

Location

The land is located on Summerfield Terrace, Newcastle upon Tyne. Summerfield Terrace runs through Low Westwood, an out of town suburb a couple of miles south of Chopwell and five miles north of Consett.

Site Details

The subject site is a linear plot of land measuring 760sqm (0.19ac), boarded on three sides by shrubbery with one side open to the road. We are advised that all main services are connected to this entrance of the site.

Planning Permission

The site has previously been granted planning permission for the erection of four dwellings, reference number LO/1/2008/0483/DMFP. This planning was applied for in July 2008 and has now lapsed.

Tenure

Freehold. Title number DU231938.

Additional Information

For further information please contact our office direct on 0191-425-1507, or alternatively via e-mail on commercial@pattinson.co.uk. With regards to viewing the subject property, this is to be done strictly by appointment through Keith Pattinson Commercial department. Please contact us to arrange an internal inspection, or to register your interest.



SECTION A-A
FRONT STREETSCAPE



SECTION B-B
LOOKING TOWARDS BLOCK A

Summerfield Terrace, Low Westwood, Newcastle upon Tyne, County Durham, NE17 7PP

Contact your local branch today for more information on this property:

2 Hill Street , Gateshead, Tyne & Wear, NE8 2AS, Tel: 0191 425 1507, Fax: 0191 222 0314, www.pattinson.co.uk

These particulars, whilst believed to be accurate are set out as a general outline only for guidance and do not constitute any part of an offer or contract. Intending purchasers should not rely on them as statements of representation of fact, but must satisfy themselves by inspection or otherwise as to their accuracy. No person in this firms employment has the authority to make or give any representation or warranty in respect of the property.