

FOR LEASE

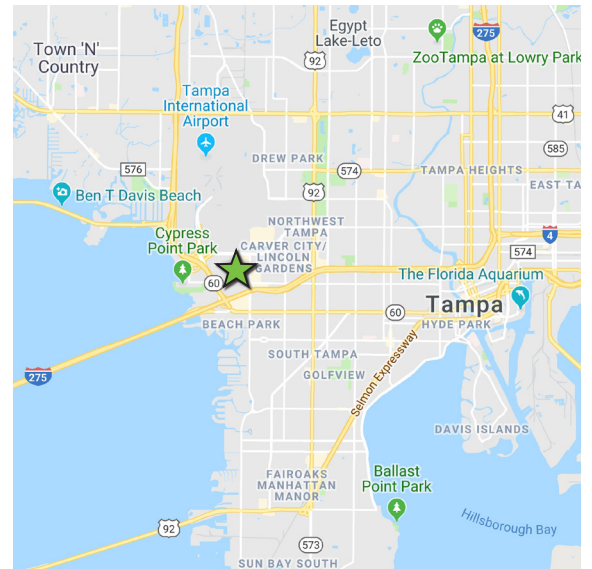
# WARD STREET CENTER

1309 WARD STREET  
TAMPA, FL 33607



## PROPERTY HIGHLIGHTS

- + Dock high loading dock
- + Building - 25,808 RSF
- + In the heart of the Westshore Business District
- + Minutes from Tampa International Airport with easy access to all of Tampa Bay
- + Flexible use



## CONTACT US

### PHILIP WEBER

First Vice President  
+1 813 380 8035  
philip.weber@cbre.com

CBRE, Inc.  
Licensed Real Estate Broker  
101 E Kennedy Blvd, Suite 1500  
Tampa, FL 33602

**CBRE**

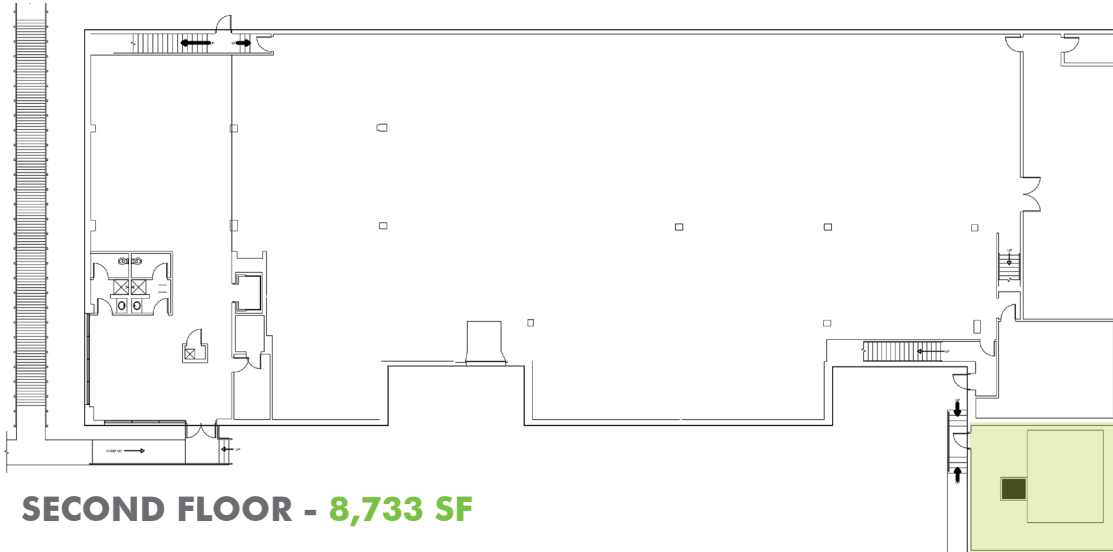
# FOR LEASE WARD STREET CENTER

1309

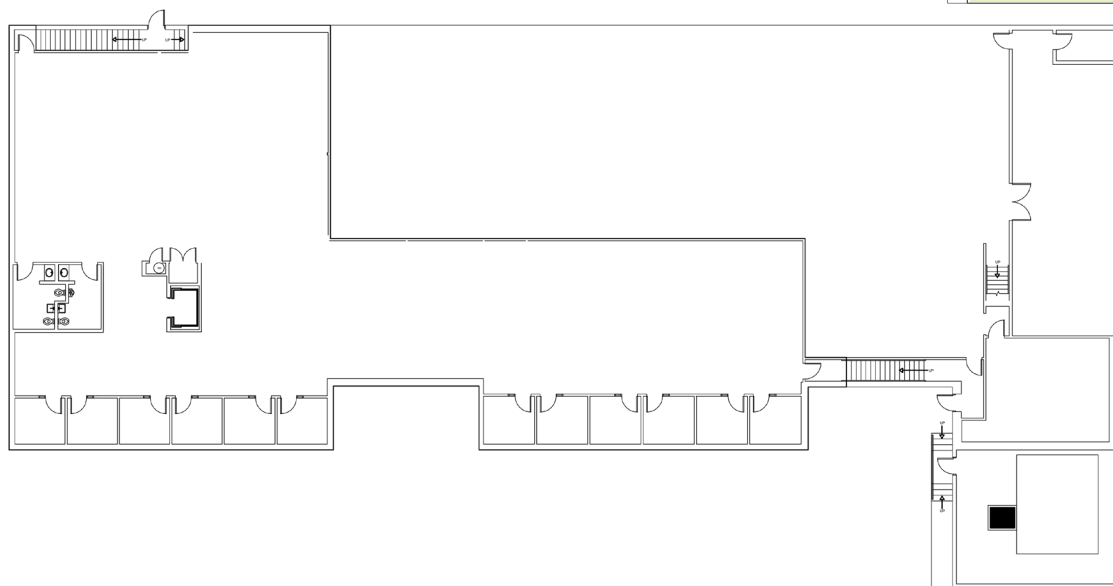
WARD STREET  
Tampa, FL 33607



**FIRST FLOOR - 17,075 SF** (includes 819± SF of unairconditioned space highlighted below)



**SECOND FLOOR - 8,733 SF**



© 2019 CBRE, Inc. All rights reserved. This information has been obtained from sources believed reliable, but has not been verified for accuracy or completeness. You should conduct a careful, independent investigation of the property and verify all information. Any reliance on this information is solely at your own risk. CBRE and the CBRE logo are service marks of CBRE, Inc. All other marks displayed on this document are the property of their respective owners, and the use of such logos does not imply any affiliation with or endorsement of CBRE.

Photos herein are the property of their respective owners and use of these images without the express written consent of the owner is prohibited.

**CBRE**