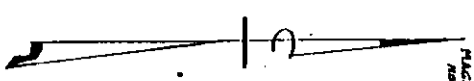
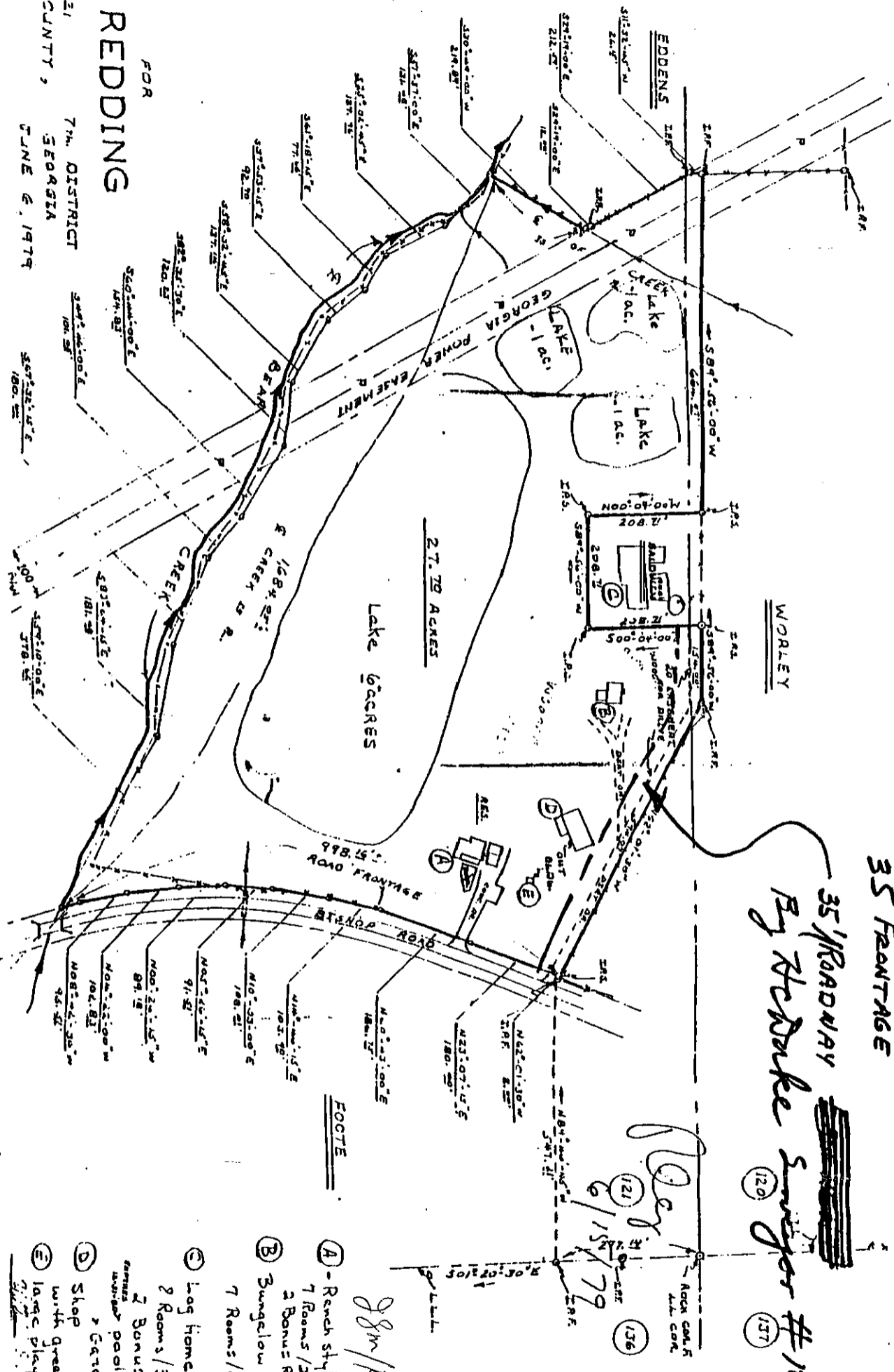


PLAC
MARK



HARRY L. REDDING
SURVEY FOR
LAND LOT 1204121
FULTON COUNTY,
GEORGIA
7TH DISTRICT
JUNE 6, 1979
SCALE: 1" = 200'



35' ROADWAY
35' FRONTAGE
9-14-79

By the Duke Swager #1048
(120)
(137)

Reddy
6/15/79
(121)
(136)

gsm/aks
O.L.B. L.C.B.

- FOOTE
- (A) - Ranch style house
7 Rooms / 2 Bath
2 Bonus Rooms
 - (B) - Bungalow style house
7 Rooms / 2 Bath
 - (C) - Log Home
2 Rooms / 3 Bath
2 Bonus Rooms
 - (D) - Shop
with greenhouse
& Carbo
 - (E) - large playhouse

